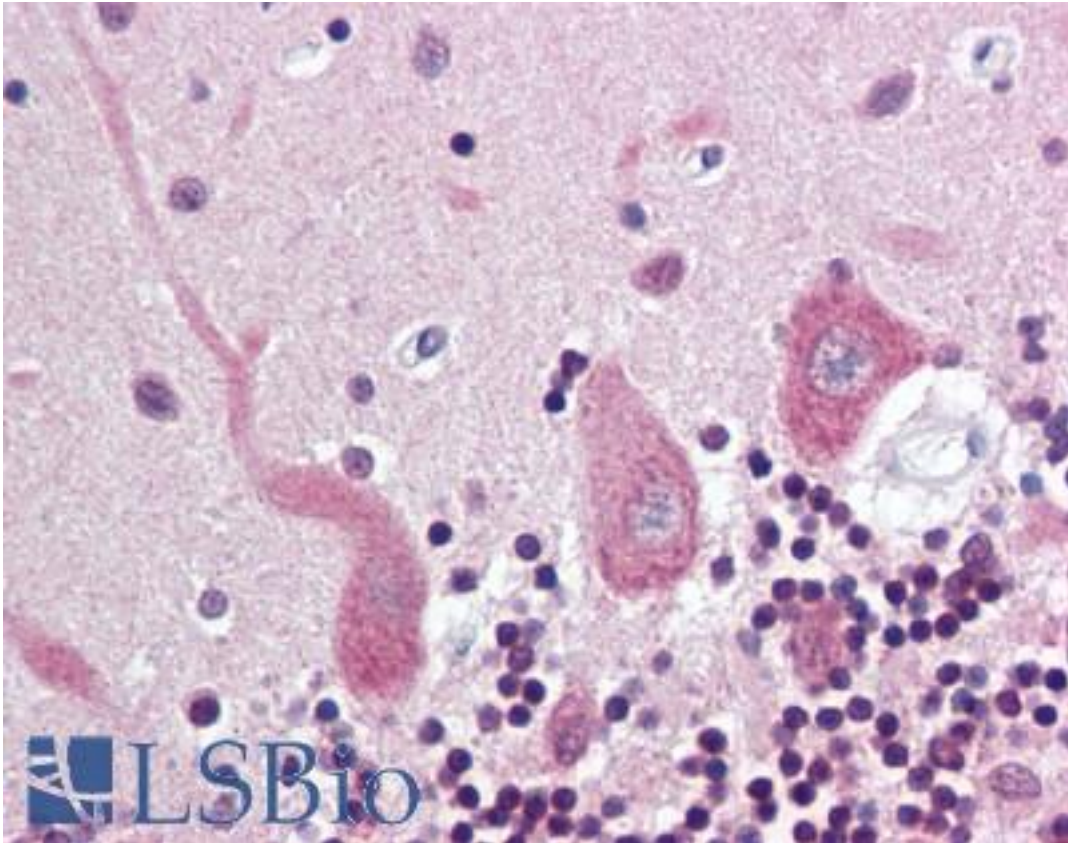


Synuclein Alpha + Beta Mouse anti-Human Monoclonal Antibody - LS-B2330 - LSBio

CatalogID:	LS-B2330
Validation:	This antibody replaces catalog number LS-C26329. It has been validated for use in the following assays: IHC-P.
Target:	Synuclein Alpha/Beta
Host	Mouse
Clonality:	Monoclonal
Isotype:	IgG2a
Immunogen Species:	Human
Immunogen:	Recombinant human alpha and beta synuclein.
Specificity:	Recognizes the human alpha and beta synuclein proteins. Does not cross-react with gamma synuclein or synoretin. Species cross-reactivity: mouse.
Reactivity:	Human, Mouse
Purification:	Protein A purified
Presentation:	PBS, pH 7.4, 0.1% sodium azide.
Recommended Storage:	Long term: Add glycerol (40-50%) -20°C; Short term: +4°C
Usage Summary:	Immunohistochemistry: LS-B2330 was validated for use in immunohistochemistry on a panel of 21 formalin-fixed, paraffin-embedded (FFPE) human tissues after heat induced antigen retrieval in pH 6.0 citrate buffer. After incubation with the primary antibody, slides were incubated with biotinylated secondary antibody, followed by alkaline phosphatase-streptavidin and chromogen. The stained slides were evaluated by a pathologist to confirm staining specificity. The optimal working concentration for LS-B2330 was determined to be 5-10 ug/ml.
Uses:	IHC - Paraffin (5 - 10 µg/ml), Immunofluorescence, Western blot (1 - 3 µg/ml), Immunoprecipitation, ELISA (Optimal dilution to be determined by the researcher)
Size:	50 µg

Immunohistochemistry Image:



Anti-Synuclein Alpha/Beta antibody IHC of human brain, cerebellum. Immunohistochemistry of formalin-fixed, paraffin-embedded tissue after heat-induced antigen retrieval. Antibody LS-B2330 concentration 10 ug/ml.

Requested From:

Japan

Laboratory Reagent For In Vitro Research Use Only

Not for resale without prior written consent from LifeSpan BioSciences, Inc.

Created on 9/23/2014

© 2014 LifeSpan BioSciences