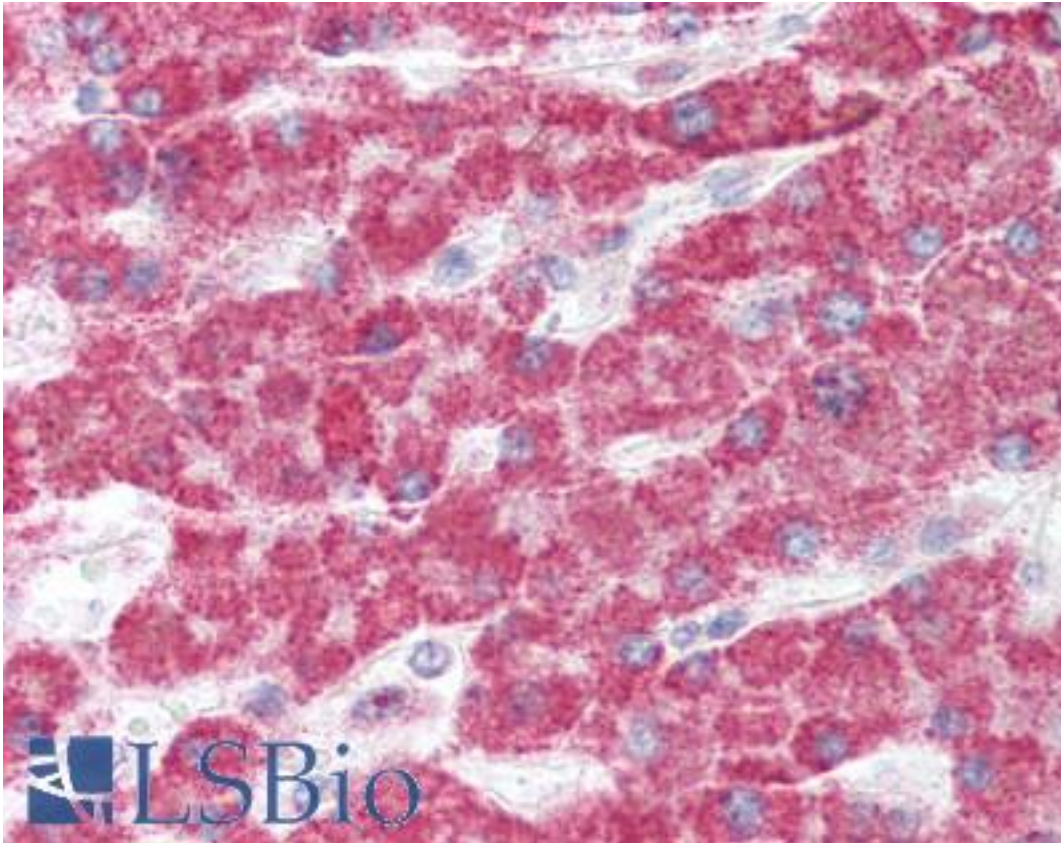


GCLC Rabbit anti-Rat Polyclonal (aa295-313) Antibody - LS-B2328 - LSBio

CatalogID:	LS-B2328
Validation:	This antibody replaces catalog number LS-C15310. It has been validated for use in the following assays: IHC-P.
Target:	glutamate-cysteine ligase, catalytic subunit (GCLC)
Synonyms:	GCLC Antibody, GCL Antibody, GCS heavy chain Antibody, Gamma-ECS Antibody, GCS Antibody, GLCL Antibody, GLCLC Antibody
Host	GCLC antibody was produced in Rabbit
Clonality:	Polyclonal
Immunogen Species:	GCLC antibody was raised against Rat
Antigen Type:	Synthetic peptide
Immunogen:	GCLC antibody was raised against a synthetic peptide derived from corresponding to aa295-313 of rat GCLC (heavy subunit of GCS).
Specificity:	Recognizes the heavy subunit of rat GCS. Species cross-reactivity: human, monkey and mouse. Cross-reacts weakly with bovine.
Epitope:	aa295-313
Reactivity:	Rat, Human, Monkey, Mouse, Bovine
Purification:	Protein A purified
Presentation:	PBS, pH 7.4, 0.2% BSA, 0.09% sodium azide.
Recommended Storage:	+4°C or -20°C, Avoid repeated freezing and thawing.
Usage Summary:	Immunohistochemistry: LS-B2328 was validated for use in immunohistochemistry on a panel of 21 formalin-fixed, paraffin-embedded (FFPE) human tissues after heat induced antigen retrieval in pH 6.0 citrate buffer. After incubation with the primary antibody, slides were incubated with biotinylated secondary antibody, followed by alkaline phosphatase-streptavidin and chromogen. The stained slides were evaluated by a pathologist to confirm staining specificity. The optimal working concentration for LS-B2328 was determined to be 5 ug/ml. Suitable for use in Western Blot and Immunoprecipitation. Western Blot: 2.5-5 ug/ml for 2hrs at RT. Immunoprecipitation: 10 ug/mg protein lysate. Denatured verified. Use Protein A. Positive control: Jurkat, MAD109, PC12 cells.
Uses:	IHC - Paraffin (5 ug/ml), Western blot, Immunoprecipitation, ELISA (Optimal dilution to be determined by the researcher)
Size:	50 µl
Concentration:	1 mg/ml

Immunohistochemistry Image:



Anti-GCLC antibody IHC of human liver. Immunohistochemistry of formalin-fixed, paraffin-embedded tissue after heat-induced antigen retrieval. Antibody LS-B2328 concentration 5 ug/ml.

Requested From:

Japan

Laboratory Reagent For In Vitro Research Use Only

Not for resale without prior written consent from LifeSpan BioSciences, Inc.

Created on 9/23/2014

© 2014 LifeSpan BioSciences