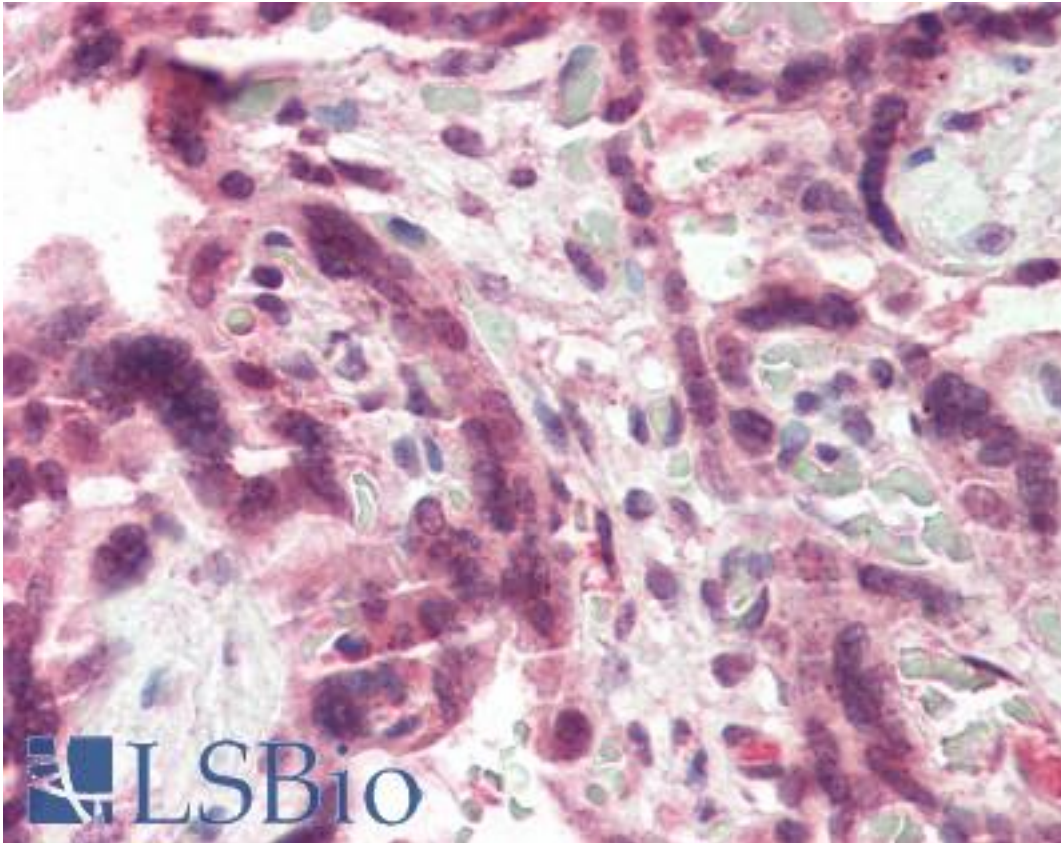


**CCKBR / Cckb Goat anti-Human Polyclonal (Internal) Antibody - LS-B2325 - LSBio**

<b>CatalogID:</b>	LS-B2325
<b>Validation:</b>	This antibody replaces catalog number LS-C54625. It has been validated for use in the following assays: IHC-P.
<b>Target:</b>	cholecystokinin B receptor (CCKBR)
<b>Synonyms:</b>	CCKBR Antibody, CCKB Antibody, Cholecystokinin-2 receptor Antibody, CCK-BR Antibody, CCK2 receptor Antibody, CCK2-R Antibody, CCKB-R Antibody, Cholecystokinin-B Antibody, GASR Antibody, CCK-B Antibody, CCK-B receptor Antibody, CCK2R Antibody, Cckb receptor Antibody, CCKRB Antibody, Cholecystokinin B receptor Antibody, Gastrin receptor Antibody
<b>Family / Subfamily:</b>	GPCR / Cholecystokinin
<b>Host</b>	CCKBR antibody was produced in Goat
<b>Clonality:</b>	Polyclonal
<b>Immunogen Species:</b>	CCKBR / Cckb antibody was raised against Human
<b>Antigen Type:</b>	Synthetic peptide
<b>Immunogen:</b>	CCKBR / Cckb antibody was raised against synthetic peptide C-FDGSDSDSQRVRNQ from an internal region of human CCKBR (NP_795344.1). Percent identity by BLAST analysis: Human, Gorilla, Orangutan, Gibbon (100%); Elephant (94%); Monkey, Hamster (88%); Marmoset, Mouse, Rabbit (81%).
<b>Specificity:</b>	Human CCKBR.
<b>Epitope:</b>	Internal
<b>Reactivity:</b>	Human, Gorilla, Orangutan, Gibbon
<b>Purification:</b>	Immunoaffinity purified
<b>Presentation:</b>	Tris-buffered saline, pH 7.3, 0.5% BSA, 0.02% sodium azide
<b>Recommended Storage:</b>	Store at -20°C. Minimize freezing and thawing.
<b>Usage Summary:</b>	Immunohistochemistry: LS-B2325 was validated for use in immunohistochemistry on a panel of 21 formalin-fixed, paraffin-embedded (FFPE) human tissues after heat induced antigen retrieval in pH 6.0 citrate buffer. After incubation with the primary antibody, slides were incubated with biotinylated secondary antibody, followed by alkaline phosphatase-streptavidin and chromogen. The stained slides were evaluated by a pathologist to confirm staining specificity. The optimal working concentration for LS-B2325 was determined to be 5 ug/ml.
<b>Uses:</b>	IHC - Paraffin (5 µg/ml), Western blot (0.1 - 0.3 µg/ml), ELISA (1:32000) (Optimal dilution to be determined by the researcher)
<b>Size:</b>	50 µg
<b>Concentration:</b>	0.5 mg/ml

**Immunohistochemistry Image:**



Anti-CCKBR antibody IHC of human placenta. Immunohistochemistry of formalin-fixed, paraffin-embedded tissue after heat-induced antigen retrieval. Antibody LS-B2325 concentration 5 ug/ml.

**Requested From:**

Japan

Laboratory Reagent For In Vitro Research Use Only

Not for resale without prior written consent from LifeSpan BioSciences, Inc.

Created on 9/23/2014

© 2014 LifeSpan BioSciences