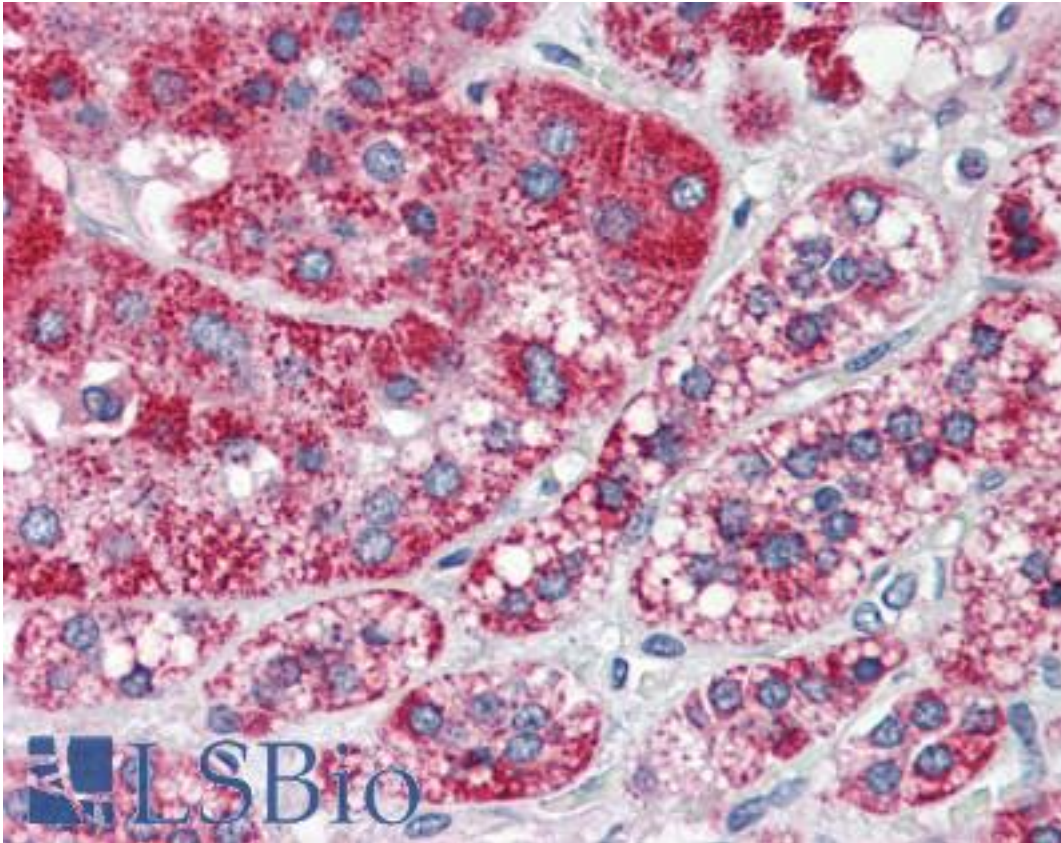


F2RL1 / PAR2 Mouse anti-Human Monoclonal (N-Terminus) (SAM11) Antibody - LS-B2321 - LSBio	
CatalogID:	LS-B2321
Validation:	This antibody replaces catalog number LS-C38064. It has been validated for use in the following assays: IHC-P.
Target:	coagulation factor II (thrombin) receptor-like 1 (F2RL1)
Synonyms:	F2RL1 Antibody, PAR2 Antibody, Thrombin receptor-like 1 Antibody, Protease-activated receptor 2 Antibody, G-protein coupled receptor 11 Antibody, GPR11 Antibody, PAR-2 Antibody
Family / Subfamily:	GPCR / Proteinase-activated
Host	F2RL1 antibody was produced in Mouse
Clonality:	Monoclonal
Isotype:	IgG2a
Clone Name:	SAM11
Immunogen Species:	F2RL1 / PAR2 antibody was raised against Human
Antigen Type:	Synthetic peptide
Immunogen:	F2RL1 / PAR2 antibody was raised against synthetic peptide corresponding to the N-terminal of the human PAR2 receptor.
Specificity:	Recognizes native peptide and the N-terminus of the human PAR2 receptor. Does not cross-react with PAR1.
Epitope:	N-Terminus
Reactivity:	Human
Purification:	Protein A purified
Presentation:	PBS, pH 7.4, 0.1% sodium azide.
Recommended Storage:	Long term: -20°C; Short term: +4°C. Avoid repeat freeze-thaw cycles.
Usage Summary:	Immunohistochemistry: LS-B2321 was validated for use in immunohistochemistry on a panel of 21 formalin-fixed, paraffin-embedded (FFPE) human tissues after heat induced antigen retrieval in pH 6.0 citrate buffer. After incubation with the primary antibody, slides were incubated with biotinylated secondary antibody, followed by alkaline phosphatase-streptavidin and chromogen. The stained slides were evaluated by a pathologist to confirm staining specificity. The optimal working concentration for LS-B2321 was determined to be 5 µg/ml. Immunofluorescence: 1 -3 µg/ml. ELISA: 0.1-1 µg/ml. Western Blot: 1-3 µg/ml.
Uses:	IHC - Paraffin (5 µg/ml), Immunofluorescence (1 - 3 µg/ml), Western blot (1 - 3 µg/ml), ELISA (0.1 - 1 µg/ml) (Optimal dilution to be determined by the researcher)
Size:	50 µg
Concentration:	0.5 mg/ml

Immunohistochemistry Image:



Anti-F2RL1 antibody IHC of human adrenal. Immunohistochemistry of formalin-fixed, paraffin-embedded tissue after heat-induced antigen retrieval. Antibody LS-B2321 concentration 5 ug/ml.

Requested From:

Japan

Laboratory Reagent For In Vitro Research Use Only

Not for resale without prior written consent from LifeSpan BioSciences, Inc.

Created on 9/23/2014

© 2014 LifeSpan BioSciences