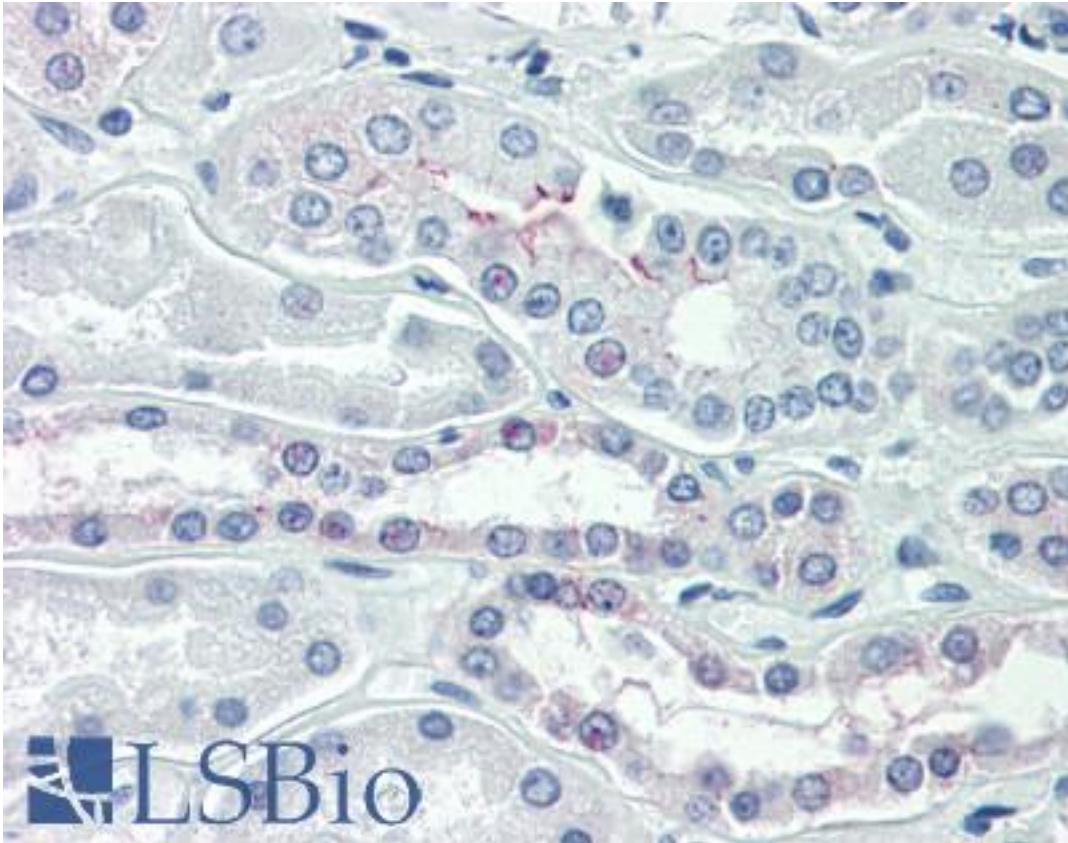


OCLN / Occludin Mouse anti-Human Monoclonal (C-Terminus) (OC-3F10) Antibody - LS-B2320 - LSBio	
CatalogID:	LS-B2320
Validation:	This antibody replaces catalog number LS-C37845. It has been validated for use in the following assays: IHC-P.
Target:	occludin (OCLN)
Synonyms:	OCLN Antibody, Occludin Antibody, BLCPMG Antibody
Host	OCLN antibody was produced in Mouse
Clonality:	Monoclonal
Isotype:	IgG1,k
Clone Name:	OC-3F10
Immunogen Species:	OCLN / Occludin antibody was raised against Human
Antigen Type:	Fusion protein
Immunogen:	OCLN / Occludin antibody was raised against gST fusion protein consisting of the C-terminal region (~150aa) of human occludin.
Specificity:	Recognizes mammalian Occludin Protein. Species cross-reactivity: human, mouse, rat and canine.
Epitope:	C-Terminus
Reactivity:	Human, Mouse, Rat, Dog
Purification:	Protein A purified
Presentation:	PBS, pH 7.4, 0.1% sodium azide.
Recommended Storage:	Long term: -20°C; Short term: +4°C. Avoid repeat freeze-thaw cycles.
Usage Summary:	Immunohistochemistry: LS-B2320 was validated for use in immunohistochemistry on a panel of 21 formalin-fixed, paraffin-embedded (FFPE) human tissues after heat induced antigen retrieval in pH 6.0 citrate buffer. After incubation with the primary antibody, slides were incubated with biotinylated secondary antibody, followed by alkaline phosphatase-streptavidin and chromogen. The stained slides were evaluated by a pathologist to confirm staining specificity. The optimal working concentration for LS-B2320 was determined to be 10 µg/ml. Positive control: T84 cell line (human intestinal epithelium), MDCK cells (canine kidney), rat liver and Caco-2 cells (human colon adenocarcinoma). Does not appear to detect the most highly phosphorylated form of the occludin protein when tested on Caco-2 cells.
Uses:	IHC - Paraffin (10 µg/ml), Immunofluorescence (2 - 3 µg/ml), Western blot (0.1 - 1 µg/ml), ELISA (0.1 - 1 µg/ml) (Optimal dilution to be determined by the researcher)
Size:	50 µg
Concentration:	0.5 mg/ml

Immunohistochemistry Image:



Anti-Occludin antibody IHC of human kidney. Immunohistochemistry of formalin-fixed, paraffin-embedded tissue after heat-induced antigen retrieval. Antibody LS-B2320 concentration 10 ug/ml.

Requested From:

Japan

Laboratory Reagent For In Vitro Research Use Only

Not for resale without prior written consent from LifeSpan BioSciences, Inc.

Created on 9/23/2014

© 2014 LifeSpan BioSciences