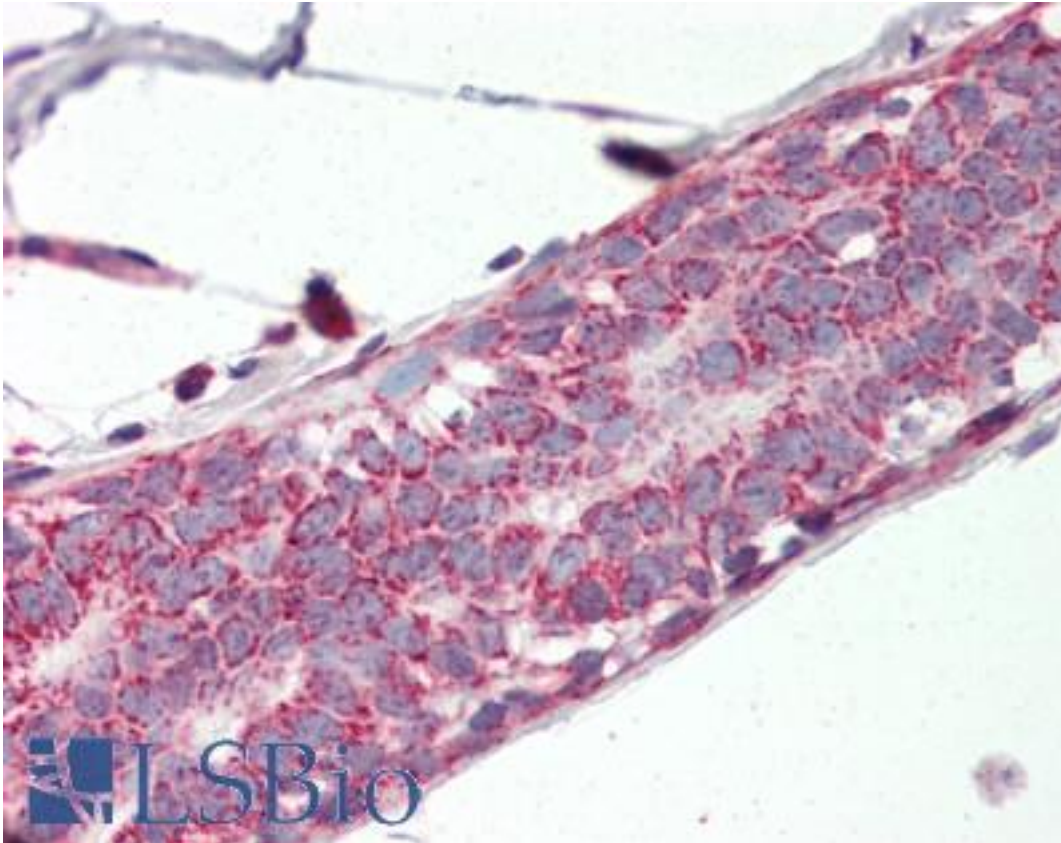


Prohibitin 2 / PHB2 Rabbit anti-Human Polyclonal (aa88-299) Antibody - LS-B2316 - LSBio	
CatalogID:	LS-B2316
Validation:	This antibody replaces catalog number LS-C17619. It has been validated for use in the following assays: IHC-P.
Target:	prohibitin 2 (PHB2)
Synonyms:	PHB2 Antibody, BCAP37 Antibody, BAP Antibody, D-prohibitin Antibody, p22 Antibody, Prohibitin-2 Antibody, B-cell associated protein Antibody, Bap37 Antibody, PNAS-141 Antibody, Prohibitin 2 Antibody, REA Antibody
Family / Subfamily:	Transcription factor
Host	PHB2 antibody was produced in Rabbit
Clonality:	Polyclonal
Isotype:	IgG
Immunogen Species:	Prohibitin 2 / PHB2 antibody was raised against Human
Antigen Type:	Fusion protein
Immunogen:	Prohibitin 2 / PHB2 antibody was raised against his6-tagged fusion protein corresponding to aa88-299 of human REA-1. The immunizing sequence is identical in mouse.
Specificity:	Recognizes mouse REA, Mr 37kD. Species cross-reactivity: human and rat.
Epitope:	aa88-299
Reactivity:	Human, Rat
Purification:	Protein A purified
Presentation:	Tris-glycine, 0.15 M sodium chloride, pH 7.4, 0.05% sodium azide.
Recommended Storage:	+4°C or -20°C, Avoid repeated freezing and thawing.
Usage Summary:	Immunohistochemistry: LS-B2316 was validated for use in immunohistochemistry on a panel of 21 formalin-fixed, paraffin-embedded (FFPE) human tissues after heat induced antigen retrieval in pH 6.0 citrate buffer. After incubation with the primary antibody, slides were incubated with biotinylated secondary antibody, followed by alkaline phosphatase-streptavidin and chromogen. The stained slides were evaluated by a pathologist to confirm staining specificity. The optimal working concentration for LS-B2316 was determined to be 5 µg/ml. Immunocytochemistry. Proteins were visualized using a goat anti-rabbit IgG labeled with HRP and a chemiluminescence detection system. Immunoprecipitation: Immunoprecipitates REA from MCF-7 and 3T3 whole cell extracts. Immunocytochemistry: Nuclear staining of REA in paraformaldehyde fixed, Triton X-100 permeabilized MCF-7 cells.
Uses:	IHC - Paraffin (5 µg/ml), ICC, Western blot (0.5 - 2 µg/ml), Immunoprecipitation (Optimal dilution to be determined by the researcher)
Size:	50 µg
Concentration:	1 mg/ml

Immunohistochemistry Image:



Anti-PHB2 antibody IHC of human breast. Immunohistochemistry of formalin-fixed, paraffin-embedded tissue after heat-induced antigen retrieval. Antibody LS-B2316 concentration 5 ug/ml.

Requested From:

Japan

Laboratory Reagent For In Vitro Research Use Only

Not for resale without prior written consent from LifeSpan BioSciences, Inc.

Created on 9/23/2014

© 2014 LifeSpan BioSciences