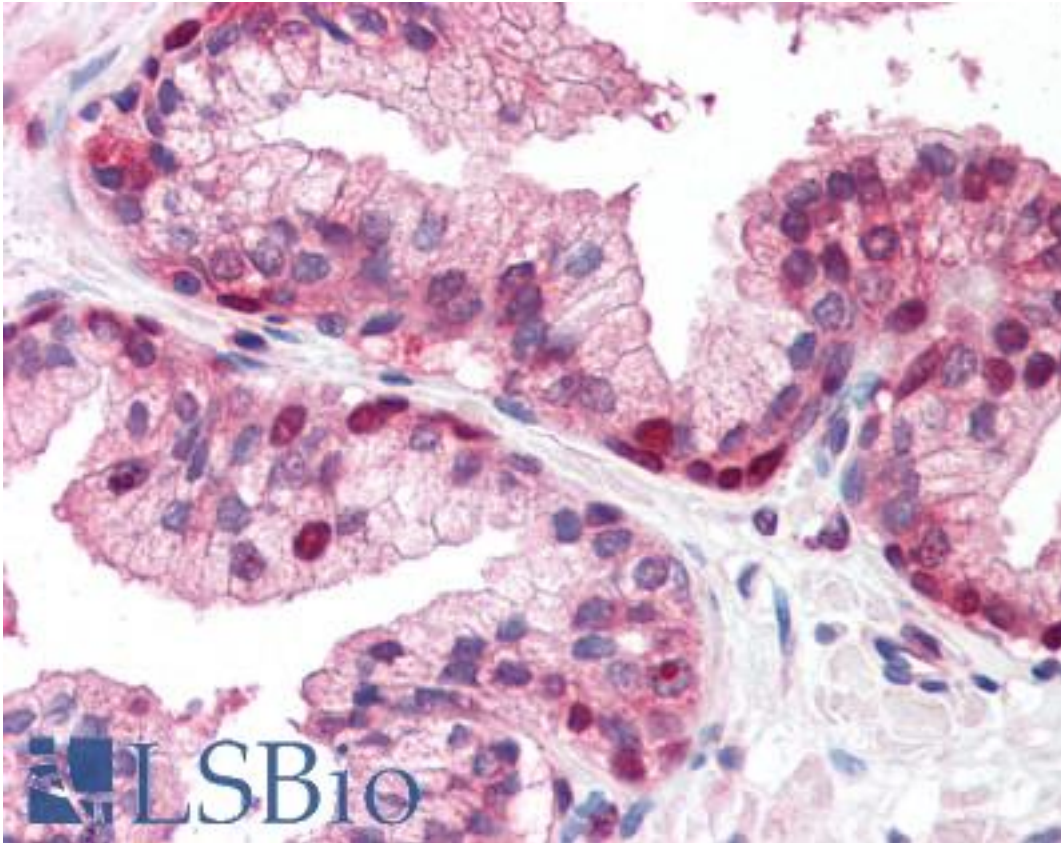


APEX1 / APE1 Mouse anti-Human Monoclonal Antibody - LS-B2313 - LSBio	
CatalogID:	LS-B2313
Validation:	This antibody replaces catalog number LS-C11933. It has been validated for use in the following assays: IHC-P.
Target:	APEX nuclease (multifunctional DNA repair enzyme) 1 (APEX1)
Synonyms:	APEX1 Antibody, AP endonuclease class I Antibody, AP lyase Antibody, APE Antibody, APE-1 Antibody, APEN Antibody, APE1 Antibody, APEX nuclease Antibody, Redox factor-1 Antibody, AP endonuclease 1 Antibody, APEX Antibody, APX Antibody, Protein REF-1 Antibody, REF-1 Antibody, REF1 Antibody
Host	APEX1 antibody was produced in Mouse
Clonality:	Monoclonal
Isotype:	IgG2a
Immunogen Species:	APEX1 / APE1 antibody was raised against Human
Antigen Type:	Recombinant protein
Immunogen:	APEX1 / APE1 antibody was raised against recombinant human APE1 (apurinic/apyrimidinic endonuclease).
Specificity:	Recognizes human APE1.
Reactivity:	Human
Purification:	Purified
Presentation:	PBS, 0.05% sodium azide.
Recommended Storage:	Long term: Add glycerol (40-50%) -20°C; Short term: +4°C
Usage Summary:	Immunohistochemistry: LS-B2313 was validated for use in immunohistochemistry on a panel of 21 formalin-fixed, paraffin-embedded (FFPE) human tissues after heat induced antigen retrieval in pH 6.0 citrate buffer. After incubation with the primary antibody, slides were incubated with biotinylated secondary antibody, followed by alkaline phosphatase-streptavidin and chromogen. The stained slides were evaluated by a pathologist to confirm staining specificity. The optimal working concentration for LS-B2313 was determined to be 5 ug/ml. Western Blot: 1:1000. Detects a band of ~37kD.
Uses:	IHC - Paraffin (5 µg/ml), Western blot (1:1000), Immunoprecipitation (Optimal dilution to be determined by the researcher)
Size:	50 µl

Immunohistochemistry Image:



Anti-APEX1 / APE1 antibody IHC of human prostate. Immunohistochemistry of formalin-fixed, paraffin-embedded tissue after heat-induced antigen retrieval. Antibody LS-B2313 concentration 5 ug/ml.

Requested From:

Japan

Laboratory Reagent For In Vitro Research Use Only

Not for resale without prior written consent from LifeSpan BioSciences, Inc.

Created on 9/23/2014

© 2014 LifeSpan BioSciences