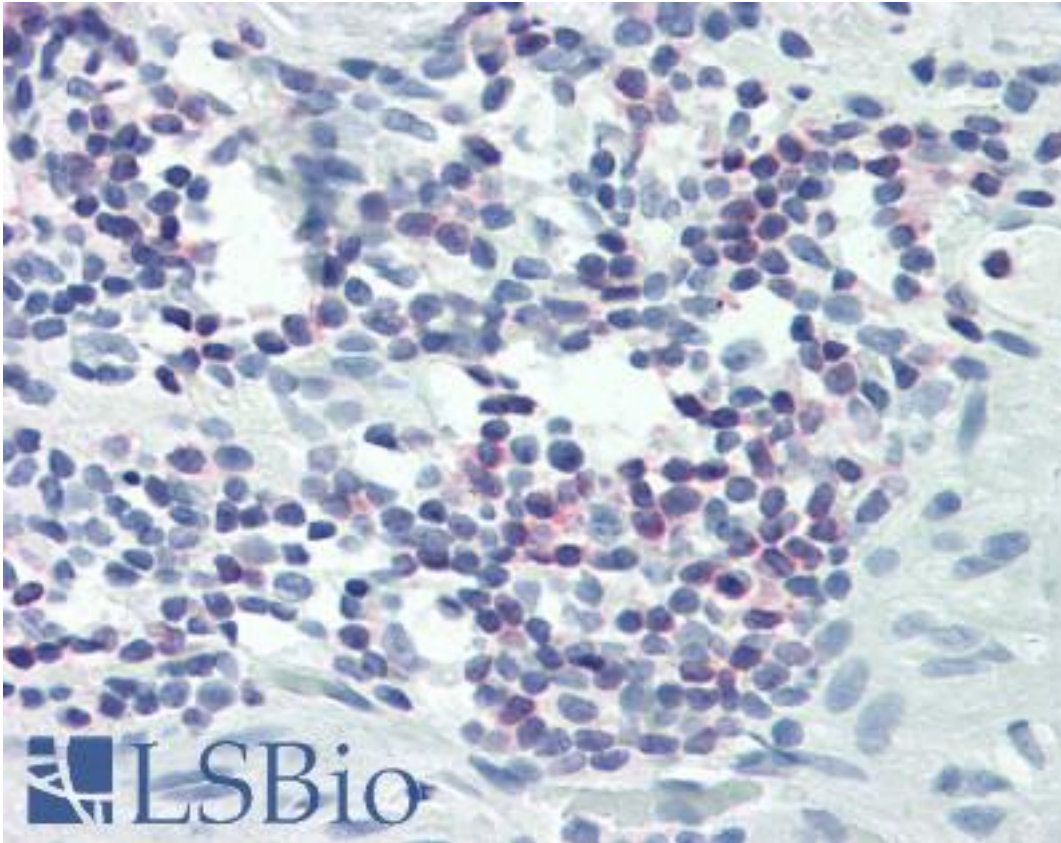


PLCG1 Rabbit anti-Human Polyclonal (C-Terminus) Antibody - LS-B2311 - LSBio

CatalogID:	LS-B2311
Validation:	This antibody replaces catalog number LS-C9599. It has been validated for use in the following assays: IHC-P.
Target:	phospholipase C, gamma 1 (PLCG1)
Synonyms:	PLCG1 Antibody, Phospholipase C, gamma 1 Antibody, Phospholipase C-148 Antibody, Phosphoinositidase C Antibody, Phospholipase C-II Antibody, Inositoltrisphosphohydrolase Antibody, PLC-gamma-1 Antibody, PLC1 Antibody, PLC-148 Antibody, PLC-II Antibody, PLC148 Antibody, NCKAP3 Antibody, Phospholipase C-gamma-1 Antibody, PLCgamma1 Antibody
Family / Subfamily:	Phospholipase / not assigned-Phospholipase
Host	PLCG1 antibody was produced in Rabbit
Clonality:	Polyclonal
Isotype:	IgG
Immunogen Species:	PLCG1 antibody was raised against Human
Antigen Type:	Synthetic peptide
Immunogen:	PLCG1 antibody was raised against synthetic peptide (KLH coupled) corresponding to the C-terminal residues of human PLCgamma1.
Specificity:	Recognizes endogenous levels of total human PLC gamma1 protein. Does not cross-react with PLCgamma2. Species cross-reactivity: mouse and rat. MW: 155kD.
Epitope:	C-Terminus
Reactivity:	Human
Purification:	Protein A purified
Presentation:	10 mM HEPES, pH 7.5, 150 mM sodium chloride, 0.1 mg/ml BSA, 50% glycerol. No preservative added.
Recommended Storage:	+4°C or -20°C, Avoid repeated freezing and thawing.
Usage Summary:	Immunohistochemistry: LS-B2311 was validated for use in immunohistochemistry on a panel of 21 formalin-fixed, paraffin-embedded (FFPE) human tissues after heat induced antigen retrieval in pH 6.0 citrate buffer. After incubation with the primary antibody, slides were incubated with biotinylated secondary antibody, followed by alkaline phosphatase-streptavidin and chromogen. The stained slides were evaluated by a pathologist to confirm staining specificity. The optimal working concentration for LS-B2311 was determined to be 1:25-1:100.
Uses:	IHC - Paraffin (1:25 - 1:100), Western blot (1:1000), Immunoprecipitation (1:50) (Optimal dilution to be determined by the researcher)
Size:	50 µl
Concentration:	0.05 mg/ml

Immunohistochemistry Image:



Anti-PLCG1 antibody IHC of human colon, lymphocytes. Immunohistochemistry of formalin-fixed, paraffin-embedded tissue after heat-induced antigen retrieval. Antibody LS-B2311 dilution 1:25.

Requested From:

Japan

Laboratory Reagent For In Vitro Research Use Only

Not for resale without prior written consent from LifeSpan BioSciences, Inc.

Created on 9/23/2014

© 2014 LifeSpan BioSciences