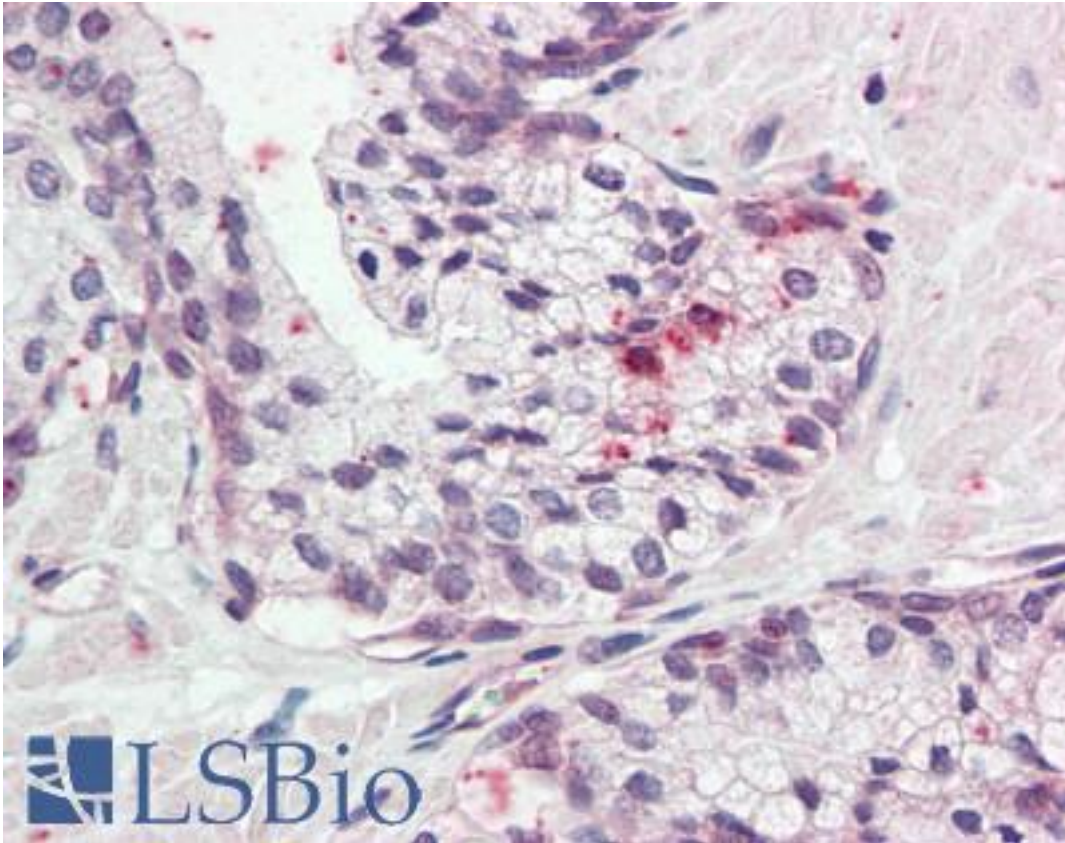


KLK11 / Kallikrein 11 Rabbit anti-Human Polyclonal (aa68-82) Antibody - LS-B2310 - LSBio	
<b>CatalogID:</b>	LS-B2310
<b>Validation:</b>	This antibody replaces catalog number LS-C8329. It has been validated for use in the following assays: IHC-P.
<b>Target:</b>	kallikrein-related peptidase 11 (KLK11)
<b>Synonyms:</b>	KLK11 Antibody, Hippostasin Antibody, HK11 Antibody, Kallikrein 11 Antibody, Kallikrein-11 Antibody, PRSS20 Antibody, TLSP Antibody, Trypsin-like protease Antibody, Serine protease 20 Antibody, Trypsin-like serine protease Antibody
<b>Family / Subfamily:</b>	Protease / Serine S1
<b>Host</b>	KLK11 antibody was produced in Rabbit
<b>Clonality:</b>	Polyclonal
<b>Isotype:</b>	IgG
<b>Immunogen Species:</b>	KLK11 / Kallikrein 11 antibody was raised against Human
<b>Antigen Type:</b>	Synthetic peptide
<b>Immunogen:</b>	KLK11 / Kallikrein 11 antibody was raised against synthetic peptide aa68-82 [YIVHLGQHNLQKEEG] of human hippostasin/KLK11. Percent identity by BLAST analysis: Human, Gorilla (100%); Gibbon (93%); Marmoset (80%).
<b>Specificity:</b>	Recognizes the residues 68-82 [YIVHLGQHNLQKEEG] of the 35kD human hippostasin/KLK11 protein. Species sequence homology: mouse and rat.
<b>Epitope:</b>	aa68-82
<b>Reactivity:</b>	Human, Gorilla
<b>Predicted Reactivity:</b>	Gibbon
<b>Purification:</b>	Immunoaffinity purified
<b>Presentation:</b>	PBS, pH 7.2, 0.02% sodium azide.
<b>Recommended Storage:</b>	+4°C or -20°C, Avoid repeated freezing and thawing.
<b>Usage Summary:</b>	Immunohistochemistry: LS-B2310 was validated for use in immunohistochemistry on a panel of 21 formalin-fixed, paraffin-embedded (FFPE) human tissues after heat induced antigen retrieval in pH 6.0 citrate buffer. After incubation with the primary antibody, slides were incubated with biotinylated secondary antibody, followed by alkaline phosphatase-streptavidin and chromogen. The stained slides were evaluated by a pathologist to confirm staining specificity. The optimal working concentration for LS-B2310 was determined to be 5 ug/ml.
<b>Uses:</b>	IHC - Paraffin (5 µg/ml), Western blot (1:500 - 1:1000), ELISA (Optimal dilution to be determined by the researcher)
<b>Size:</b>	50 µg
<b>Concentration:</b>	1 mg/ml

**Immunohistochemistry Image:**



Anti-KLK11 / Kallikrein 11 antibody IHC of human prostate. Immunohistochemistry of formalin-fixed, paraffin-embedded tissue after heat-induced antigen retrieval. Antibody LS-B2310 concentration 5 ug/ml.

**Requested From:**

Japan

Laboratory Reagent For In Vitro Research Use Only

Not for resale without prior written consent from LifeSpan BioSciences, Inc.

Created on 9/23/2014

© 2014 LifeSpan BioSciences