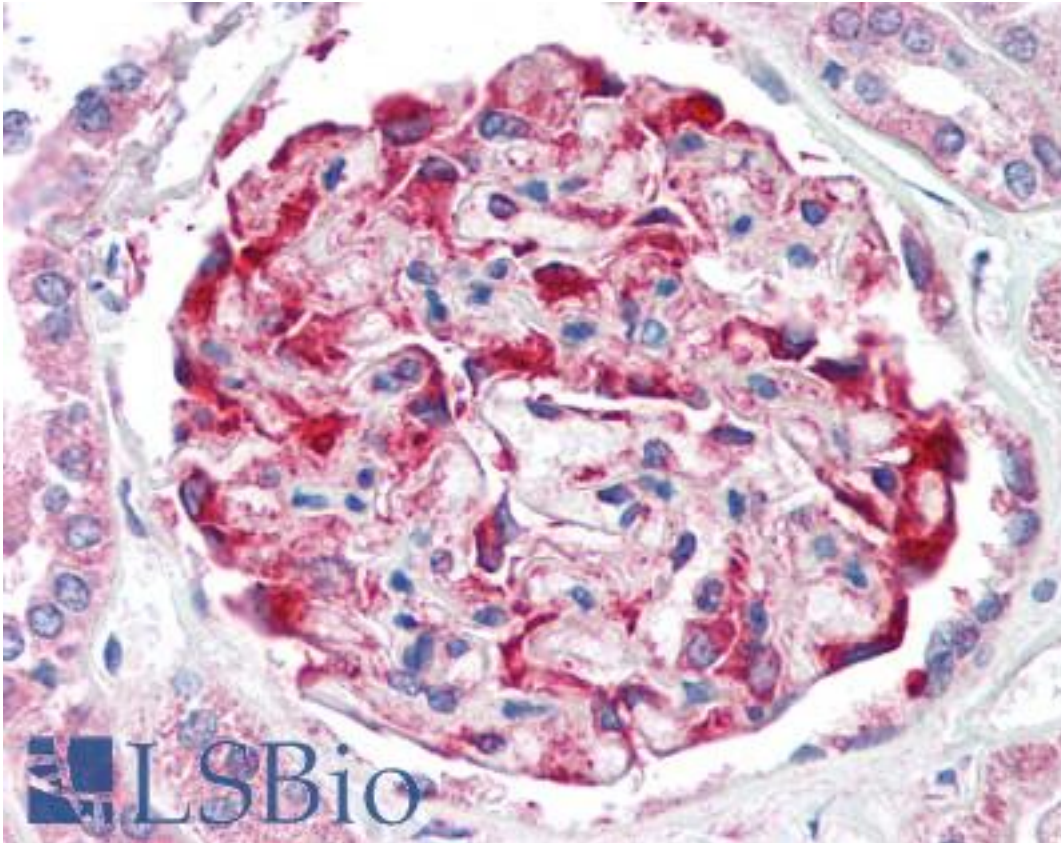


CDH11 / Cadherin 11 Rabbit anti-Human Polyclonal (Intracellular) Antibody - LS-B2308 - LSBio	
<b>CatalogID:</b>	LS-B2308
<b>Validation:</b>	This antibody replaces catalog number LS-C4286. It has been validated for use in the following assays: IHC-P.
<b>Target:</b>	cadherin 11, type 2, OB-cadherin (osteoblast) (CDH11)
<b>Synonyms:</b>	CDH11 Antibody, CAD11 Antibody, Cadherin 11 Antibody, Cadherin-11 Antibody, CDHOB Antibody, OSF-4 Antibody, Osteoblast cadherin Antibody, OB Antibody, OB-cadherin Antibody, Ventral neural cadherin Antibody, Vnc Antibody
<b>Family / Subfamily:</b>	Cadherin / not assigned-Cadherin
<b>Host</b>	CDH11 antibody was produced in Rabbit
<b>Clonality:</b>	Polyclonal
<b>Isotype:</b>	IgG
<b>Immunogen Species:</b>	CDH11 / Cadherin 11 antibody was raised against Human
<b>Antigen Type:</b>	Recombinant protein
<b>Immunogen:</b>	CDH11 / Cadherin 11 antibody was raised against recombinant protein derived from the intracellular domain of the human Cadherin 11 protein.
<b>Specificity:</b>	Recognizes human Cadherin 11 at ~110kD. An additional band at ~130kD (presumably the Cadherin 11 precursor) may also be observed. Some crossreactivity with other Cadherins is observed in approximately the following order: Cadherin11>>R-Cadherin>Cadherin 8>>N-Cadherin=P-Cadherin. No crossreactivity with Cadherin 6 or E-Cadherin has been observed.
<b>Epitope:</b>	Intracellular
<b>Reactivity:</b>	Human, Mouse
<b>Purification:</b>	Immunoaffinity purified
<b>Presentation:</b>	PBS, pH 7.4, 0.1% sodium azide
<b>Recommended Storage:</b>	Long term: -20°C; Short term: +4°C. Avoid repeat freeze-thaw cycles.
<b>Usage Summary:</b>	Immunohistochemistry: LS-B2308 was validated for use in immunohistochemistry on a panel of 21 formalin-fixed, paraffin-embedded (FFPE) human tissues after heat induced antigen retrieval in pH 6.0 citrate buffer. After incubation with the primary antibody, slides were incubated with biotinylated secondary antibody, followed by alkaline phosphatase-streptavidin and chromogen. The stained slides were evaluated by a pathologist to confirm staining specificity. The optimal working concentration for LS-B2308 was determined to be 5 ug/ml. Positive control: MDA. MB231 cells (human) and mouse L fibroblast lysates.
<b>Uses:</b>	IHC - Paraffin (5 µg/ml), IHC - Frozen, Western blot (1 - 2 µg/ml), ELISA (0.1 - 1 µg/ml) (Optimal dilution to be determined by the researcher)
<b>Size:</b>	50 µg
<b>Concentration:</b>	0.25 mg/ml

**Immunohistochemistry Image:**



Anti-CDH11 antibody IHC of human kidney. Immunohistochemistry of formalin-fixed, paraffin-embedded tissue after heat-induced antigen retrieval. Antibody LS-B2308 concentration 5 ug/ml.

**Requested From:**

Japan

Laboratory Reagent For In Vitro Research Use Only

Not for resale without prior written consent from LifeSpan BioSciences, Inc.

Created on 9/23/2014

© 2014 LifeSpan BioSciences