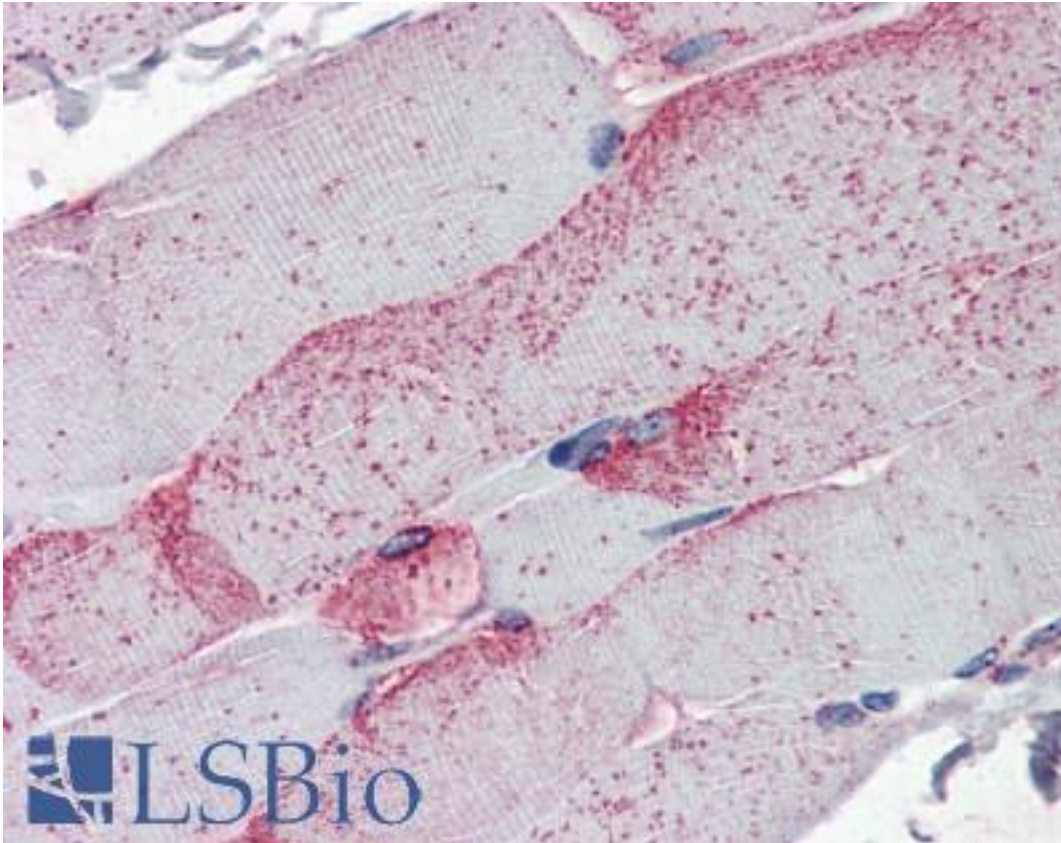


CDH11 / Cadherin 11 Mouse anti-Human Monoclonal (Intracellular) (5B2H5) Antibody - LS-B2307 - LSBio	
CatalogID:	LS-B2307
Validation:	This antibody replaces catalog number LS-C4285. It has been validated for use in the following assays: IHC-P.
Target:	cadherin 11, type 2, OB-cadherin (osteoblast) (CDH11)
Synonyms:	CDH11 Antibody, CAD11 Antibody, Cadherin 11 Antibody, Cadherin-11 Antibody, CDHOB Antibody, OSF-4 Antibody, Osteoblast cadherin Antibody, OB Antibody, OB-cadherin Antibody, Ventral neural cadherin Antibody, Vnc Antibody
Family / Subfamily:	Cadherin / not assigned-Cadherin
Host	CDH11 antibody was produced in Mouse
Clonality:	Monoclonal
Isotype:	IgG1,k
Clone Name:	5B2H5
Immunogen Species:	CDH11 / Cadherin 11 antibody was raised against Human
Antigen Type:	Recombinant protein
Immunogen:	CDH11 / Cadherin 11 antibody was raised against recombinant protein consisting of intracellular domain of human cadherin 11.
Specificity:	Recognizes the ~110kD human Cadherin 11 protein. Cross-reactivity with other cadherin family members has not been observed.
Epitope:	Intracellular
Reactivity:	Human, Mouse
Purification:	Protein A purified
Presentation:	PBS, pH 7.4, 0.1% sodium azide.
Recommended Storage:	Short term +4°C (no longer than one week); Long term -20°C; Aliquot to avoid freeze/thaw cycles.
Usage Summary:	Immunohistochemistry: LS-B2307 was validated for use in immunohistochemistry on a panel of 21 formalin-fixed, paraffin-embedded (FFPE) human tissues after heat induced antigen retrieval in pH 6.0 citrate buffer. After incubation with the primary antibody, slides were incubated with biotinylated secondary antibody, followed by alkaline phosphatase-streptavidin and chromogen. The stained slides were evaluated by a pathologist to confirm staining specificity. The optimal working concentration for LS-B2307 was determined to be 5-10 ug/ml. Immunoprecipitation: 5 ug. Native, human; Not tested for mouse. Positive control: MDA. MB231 cells (human) and mouse L fibroblast lysates.
Uses:	IHC - Paraffin (5 - 10 µg/ml), IHC - Frozen (5 - 10 µg/ml), Western blot (2 - 4 µg/ml), Immunoprecipitation (5 µg/ml), ELISA (Optimal dilution to be determined by the researcher)
Size:	50 µg
Concentration:	0.5 mg/ml

Immunohistochemistry Image:



Anti-CDH11 antibody IHC of human skeletal muscle. Immunohistochemistry of formalin-fixed, paraffin-embedded tissue after heat-induced antigen retrieval. Antibody LS-B2307 concentration 5 ug/ml.

Requested From:

Japan

Laboratory Reagent For In Vitro Research Use Only

Not for resale without prior written consent from LifeSpan BioSciences, Inc.

Created on 9/23/2014

© 2014 LifeSpan BioSciences