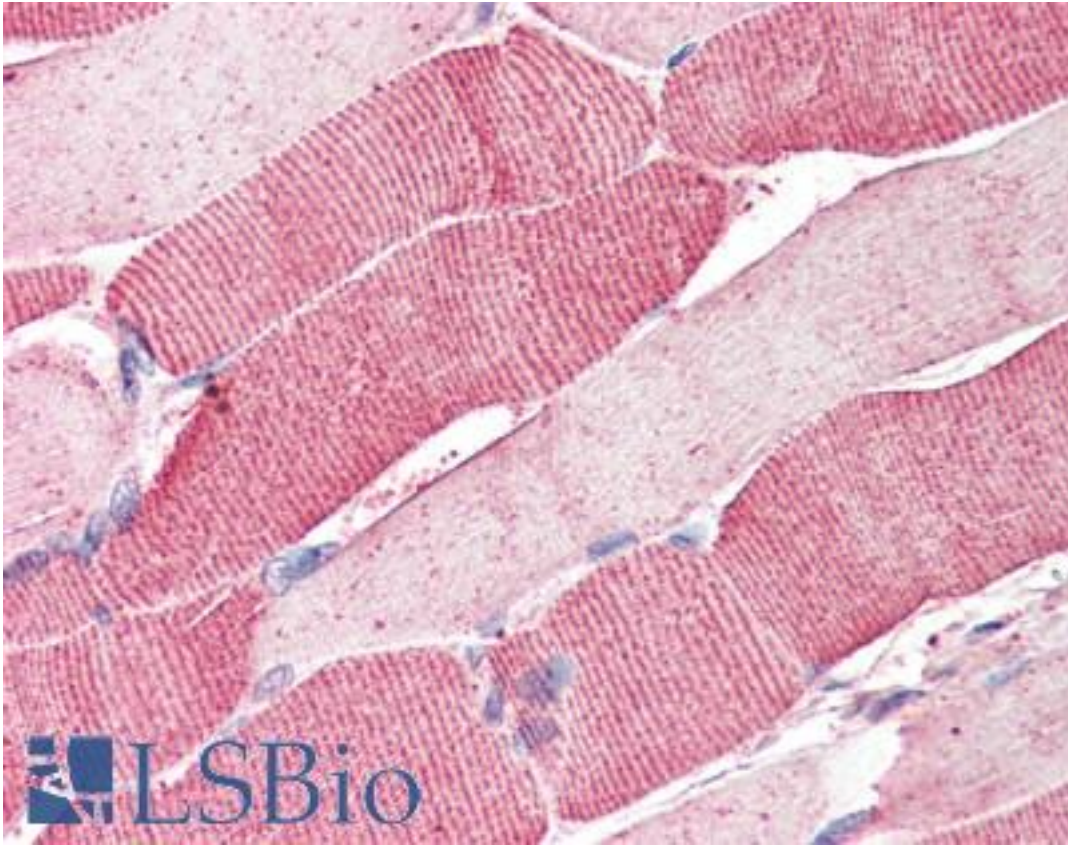


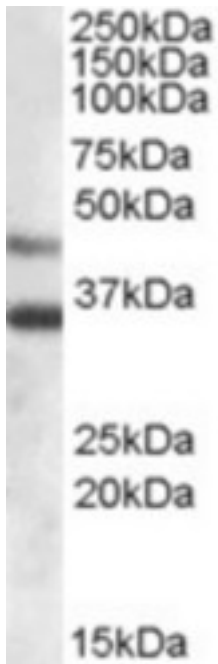
ARSB / Arylsulfatase B Goat anti-Human Polyclonal (Internal) Antibody - LS-B2300 - LSBio	
CatalogID:	LS-B2300
Validation:	This antibody replaces catalog number LS-C54544. It has been validated for use in the following assays: IHC-P.
Target:	arylsulfatase B (ARSB)
Synonyms:	ARSB Antibody, Arylsulfatase B Antibody, ASB Antibody, G4S Antibody, MPS6 Antibody
Host	ARSB antibody was produced in Goat
Clonality:	Polyclonal
Immunogen Species:	ARSB / Arylsulfatase B antibody was raised against Human
Antigen Type:	Synthetic peptide
Immunogen:	ARSB / Arylsulfatase B antibody was raised against synthetic peptide C-KLARGHTNGTKPLD from an internal region of human ARSB (NP_000037.2; NP_942002.1). Percent identity by BLAST analysis: Human, Gorilla, Gibbon, Marmoset (100%); Elephant (93%); Monkey, Bovine, Bat, Cat, Panda, Horse, Chicken (86%).
Specificity:	Human ARSB. This antibody is expected to recognise both reported isoforms (NP_000037.2; NP_942002.1).
Epitope:	Internal
Reactivity:	Human, Gorilla, Gibbon, Monkey
Purification:	Immunoaffinity purified
Presentation:	Tris-buffered saline, pH 7.3, 0.5% BSA, 0.02% sodium azide
Recommended Storage:	Store at -20°C. Minimize freezing and thawing.
Usage Summary:	Immunohistochemistry: LS-B2300 was validated for use in immunohistochemistry on a panel of 21 formalin-fixed, paraffin-embedded (FFPE) human tissues after heat induced antigen retrieval in pH 6.0 citrate buffer. After incubation with the primary antibody, slides were incubated with biotinylated secondary antibody, followed by alkaline phosphatase-streptavidin and chromogen. The stained slides were evaluated by a pathologist to confirm staining specificity. The optimal working concentration for LS-B2300 was determined to be 5 ug/ml.
Uses:	IHC - Paraffin (5 µg/ml), Western blot (0.03 - 0.1 µg/ml), ELISA (1:64000) (Optimal dilution to be determined by the researcher)
Size:	50 µg
Concentration:	0.5 mg/ml

Immunohistochemistry Image:



Anti-ARSB antibody IHC of human skeletal muscle. Immunohistochemistry of formalin-fixed, paraffin-embedded tissue after heat-induced antigen retrieval. Antibody LS-B2300 concentration 5 ug/ml.

Western Blot Image:



Antibody (0.03 ug/ml) staining of Human Heart lysate (35 ug protein in RIPA buffer). Primary incubation was 1 hour. Detected by chemiluminescence.

Requested From:

Japan

Laboratory Reagent For In Vitro Research Use Only

Not for resale without prior written consent from LifeSpan BioSciences, Inc.

Created on 9/23/2014

© 2014 LifeSpan BioSciences