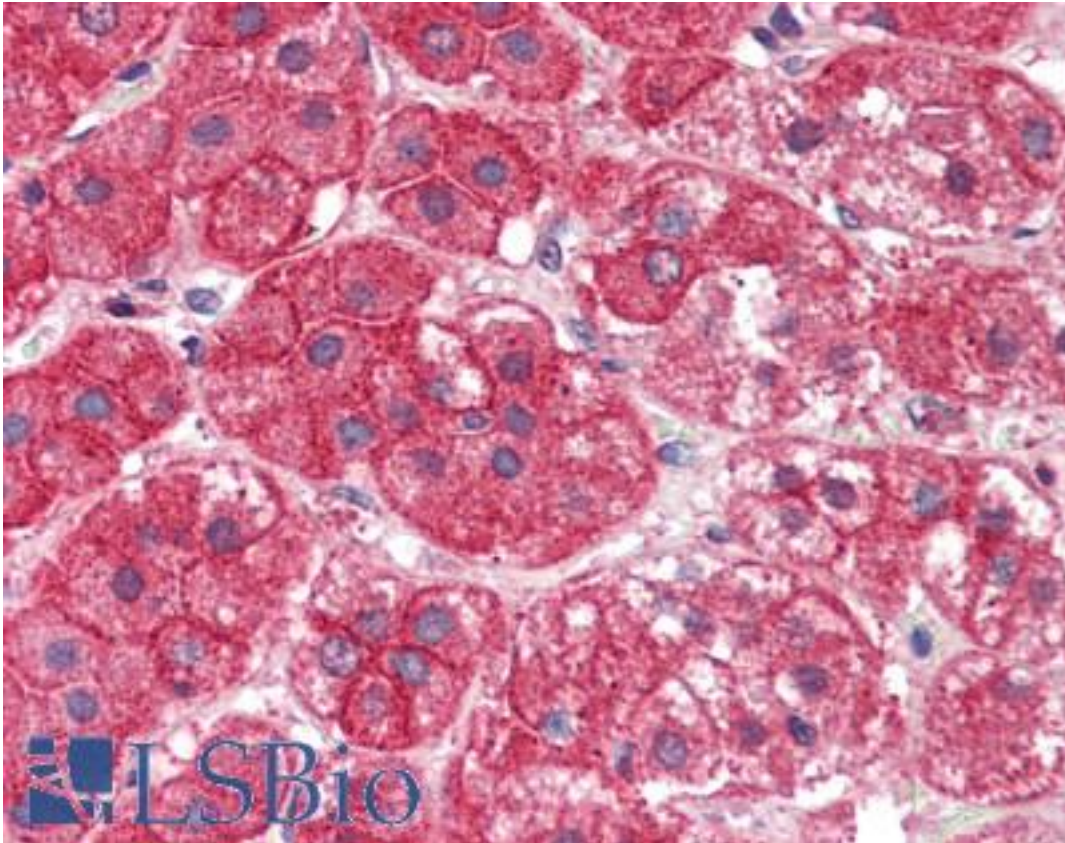


EXOC7 Goat anti-Human Polyclonal (Internal) Antibody - LS-B2297 - LSBio

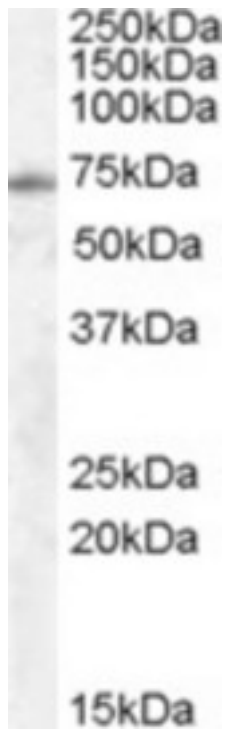
<b>CatalogID:</b>	LS-B2297
<b>Validation:</b>	This antibody replaces catalog number LS-C54803. It has been validated for use in the following assays: IHC-P.
<b>Target:</b>	exocyst complex component 7 (EXOC7)
<b>Synonyms:</b>	EXOC7 Antibody, 2-5-3p Antibody, Exo70p Antibody, EXO70 Antibody, KIAA1067 Antibody, YJL085W Antibody, EX070 Antibody, Exocyst complex component 7 Antibody
<b>Host</b>	EXOC7 antibody was produced in Goat
<b>Clonality:</b>	Polyclonal
<b>Immunogen Species:</b>	EXOC7 antibody was raised against Human
<b>Antigen Type:</b>	Synthetic peptide
<b>Immunogen:</b>	EXOC7 antibody was raised against synthetic peptide C-DNIKNDPDKEYN from an internal region of human EXOC7 (NP_001013861.1; NP_056034.2; NP_001138769.1; NP_001138771.1; NP_001138770.1). Percent identity by BLAST analysis: Human, Gorilla, Orangutan, Gibbon, Monkey, Marmoset, Mouse, Rat, Dog, Bovine, Elephant, Panda, Horse, Pig, Opossum, Turkey, Chicken, Platypus (100%); Lizard, Salmon, Zebrafish (92%).
<b>Specificity:</b>	Human EXOC7. This antibody is expected to recognise all five reported isoforms (NP_001013861.1; NP_056034.2; NP_001138769.1; NP_001138771.1; NP_001138770.1).
<b>Epitope:</b>	Internal
<b>Reactivity:</b>	Human, Gorilla, Orangutan, Gibbon, Monkey, Mouse, Rat, Bovine, Dog, Horse, Pig, Chicken
<b>Predicted Reactivity:</b>	Zebrafish
<b>Purification:</b>	Immunoaffinity purified
<b>Presentation:</b>	Tris-buffered saline, pH 7.3, 0.5% BSA, 0.02% sodium azide
<b>Recommended Storage:</b>	Store at -20°C. Minimize freezing and thawing.
<b>Usage Summary:</b>	Immunohistochemistry: LS-B2297 was validated for use in immunohistochemistry on a panel of 21 formalin-fixed, paraffin-embedded (FFPE) human tissues after heat induced antigen retrieval in pH 6.0 citrate buffer. After incubation with the primary antibody, slides were incubated with biotinylated secondary antibody, followed by alkaline phosphatase-streptavidin and chromogen. The stained slides were evaluated by a pathologist to confirm staining specificity. The optimal working concentration for LS-B2297 was determined to be 5 ug/ml.
<b>Uses:</b>	IHC - Paraffin (5 µg/ml), Western blot (1:16000) & (0.5 - 1.5 µg/ml), ELISA (1:16000) (Optimal dilution to be determined by the researcher)
<b>Size:</b>	50 µg
<b>Concentration:</b>	0.5 mg/ml

**Immunohistochemistry Image:**



Anti-EXOC7 antibody IHC of human adrenal. Immunohistochemistry of formalin-fixed, paraffin-embedded tissue after heat-induced antigen retrieval. Antibody LS-B2297 concentration 5 ug/ml.

**Western Blot Image:**



Antibody (0.5 ug/ml) staining of Human Lung lysate (35 ug protein in RIPA buffer). Primary incubation was 1 hour. Detected by chemiluminescence.

**Requested From:**

Japan

Laboratory Reagent For In Vitro Research Use Only

Not for resale without prior written consent from LifeSpan BioSciences, Inc.

Created on 9/23/2014

© 2014 LifeSpan BioSciences