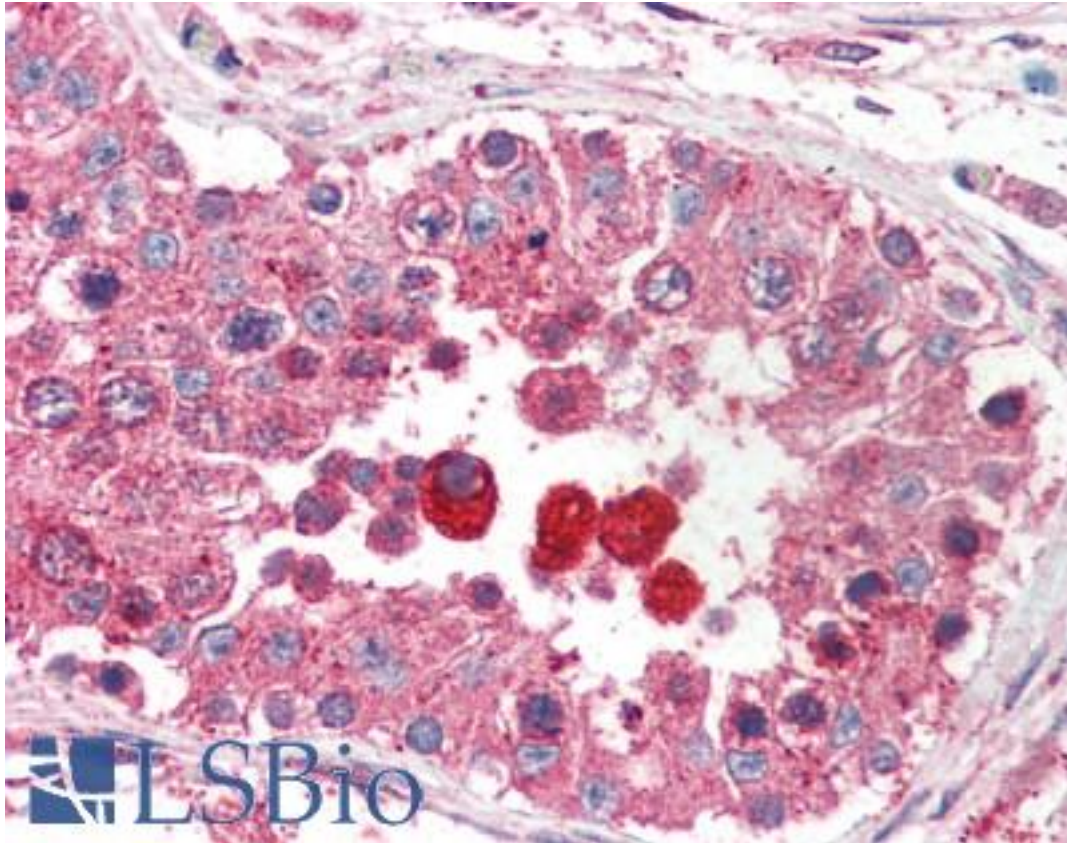


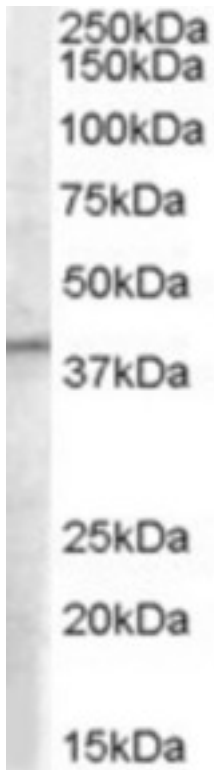
EIF3M / PCID1 Goat anti-Human Polyclonal (C-Terminus) Antibody - LS-B2296 - LSBio	
CatalogID:	LS-B2296
Validation:	This antibody replaces catalog number LS-C54560. It has been validated for use in the following assays: IHC-P.
Target:	eukaryotic translation initiation factor 3, subunit M (EIF3M)
Synonyms:	EIF3M Antibody, B5 Antibody, B5 receptor Antibody, Dendritic cell protein Antibody, GA17 Antibody, HFLB5 Antibody, Fetal lung protein B5 Antibody, Hfl-B5 Antibody, TANGO7 Antibody, PCID1 Antibody
Host	EIF3M antibody was produced in Goat
Clonality:	Polyclonal
Immunogen Species:	EIF3M / PCID1 antibody was raised against Human
Antigen Type:	Synthetic peptide
Immunogen:	EIF3M / PCID1 antibody was raised against synthetic peptide C-NAWKQNLNKVKN from the C-terminus of human EIF3M / PCID1 (NP_006351.2). Percent identity by BLAST analysis: Human, Gorilla, Orangutan, Gibbon, Monkey, Marmoset, Mouse, Rat, Dog, Bat, Bovine, Elephant, Panda, Horse, Rabbit, Pig (100%); Hamster, Opossum, Platypus, Xenopus (92%); Turkey, Chicken (83%).
Specificity:	Human EIF3M / PCID1.
Epitope:	C-Terminus
Reactivity:	Human, Gorilla, Orangutan, Gibbon, Monkey, Mouse, Rat, Bat, Bovine, Dog, Horse, Pig, Rabbit
Predicted Reactivity:	Hamster, Xenopus
Purification:	Immunoaffinity purified
Presentation:	Tris-buffered saline, pH 7.3, 0.5% BSA, 0.02% sodium azide
Recommended Storage:	Store at -20°C. Minimize freezing and thawing.
Usage Summary:	Immunohistochemistry: LS-B2296 was validated for use in immunohistochemistry on a panel of 21 formalin-fixed, paraffin-embedded (FFPE) human tissues after heat induced antigen retrieval in pH 6.0 citrate buffer. After incubation with the primary antibody, slides were incubated with biotinylated secondary antibody, followed by alkaline phosphatase-streptavidin and chromogen. The stained slides were evaluated by a pathologist to confirm staining specificity. The optimal working concentration for LS-B2296 was determined to be 5 ug/ml.
Uses:	IHC - Paraffin (5 µg/ml), Western blot (1:32000) & (1 - 3 µg/ml), ELISA (1:32000) (Optimal dilution to be determined by the researcher)
Size:	50 µg
Concentration:	0.5 mg/ml

Immunohistochemistry Image:



Anti-EIF3M / PCID1 antibody IHC of human testis. Immunohistochemistry of formalin-fixed, paraffin-embedded tissue after heat-induced antigen retrieval. Antibody LS-B2296 concentration 5 ug/ml.

Western Blot Image:



Antibody (0.1 ug/ml) staining of A549 lysate (35 ug protein in RIPA buffer). Primary incubation was 1 hour. Detected by chemiluminescence.

Requested From:

Japan

Laboratory Reagent For In Vitro Research Use Only

Not for resale without prior written consent from LifeSpan BioSciences, Inc.

Created on 9/23/2014

© 2014 LifeSpan BioSciences