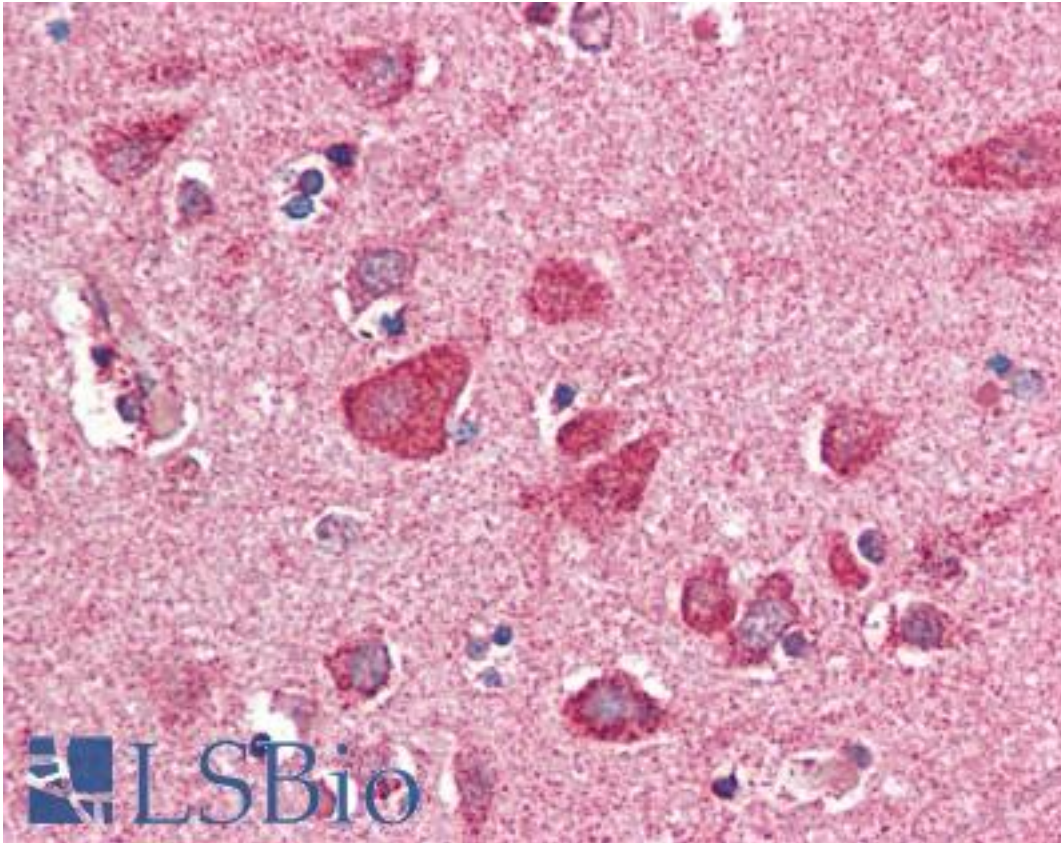


PITPNM3 / NIR1 Goat anti-Human Polyclonal (C-Terminus) Antibody - LS-B2292 - LSBio	
CatalogID:	LS-B2292
Validation:	This antibody replaces catalog number LS-C55177. It has been validated for use in the following assays: IHC-P.
Target:	PITPNM family member 3 (PITPNM3)
Synonyms:	PITPNM3 Antibody, CORD5 Antibody, NIR-1 Antibody, NIR1 Antibody, PITPnm 3 Antibody, Retinal degeneration B alpha 3 Antibody, PITPNM family member 3 Antibody, RDGBA3 Antibody
Host	PITPNM3 antibody was produced in Goat
Clonality:	Polyclonal
Immunogen Species:	PITPNM3 / NIR1 antibody was raised against Human
Antigen Type:	Synthetic peptide
Immunogen:	PITPNM3 / NIR1 antibody was raised against synthetic peptide C-SWARGPPKFESVP from the C-terminus of human PITPNM3 / NIR1 (NP_112497.2; NP_001159438.1). Percent identity by BLAST analysis: Human, Gorilla, Mouse, Horse, Pig (100%); Rat, Dog (92%).
Specificity:	Human PITPNM3 / NIR1.
Epitope:	C-Terminus
Reactivity:	Human, Gorilla, Mouse, Horse, Pig
Predicted Reactivity:	Rat, Dog
Purification:	Immunoaffinity purified
Presentation:	Tris-buffered saline, pH 7.3, 0.5% BSA, 0.02% sodium azide
Recommended Storage:	Store at -20°C. Minimize freezing and thawing.
Usage Summary:	Immunohistochemistry: LS-B2292 was validated for use in immunohistochemistry on a panel of 21 formalin-fixed, paraffin-embedded (FFPE) human tissues after heat induced antigen retrieval in pH 6.0 citrate buffer. After incubation with the primary antibody, slides were incubated with biotinylated secondary antibody, followed by alkaline phosphatase-streptavidin and chromogen. The stained slides were evaluated by a pathologist to confirm staining specificity. The optimal working concentration for LS-B2292 was determined to be 5 ug/ml.
Uses:	IHC - Paraffin (5 µg/ml), ELISA (1:16000) (Optimal dilution to be determined by the researcher)
Size:	50 µg
Concentration:	0.5 mg/ml

Immunohistochemistry Image:



Anti-PITPNM3 / NIR1 antibody IHC of human brain, cortex. Immunohistochemistry of formalin-fixed, paraffin-embedded tissue after heat-induced antigen retrieval. Antibody LS-B2292 concentration 5 ug/ml.

Requested From:

Japan

Laboratory Reagent For In Vitro Research Use Only

Not for resale without prior written consent from LifeSpan BioSciences, Inc.

Created on 9/23/2014

© 2014 LifeSpan BioSciences