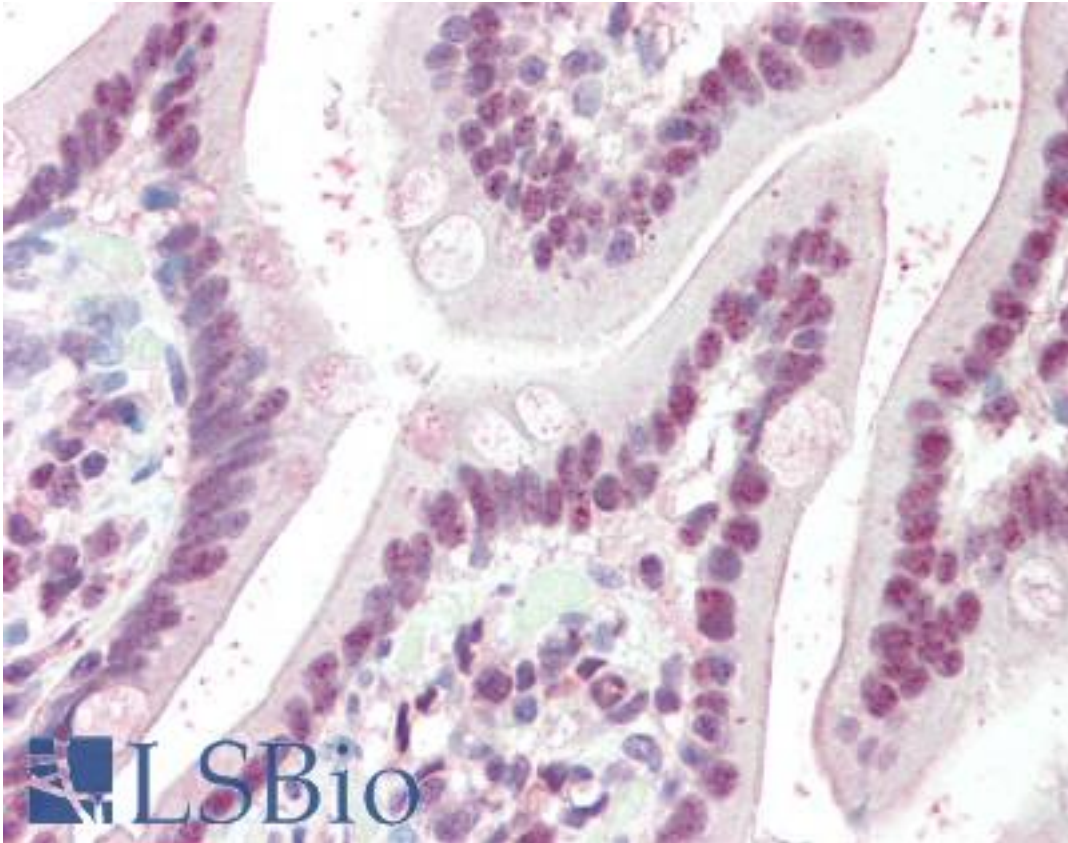


QIP1 / KPNA4 Goat anti-Human Polyclonal (C-Terminus) Antibody - LS-B2290 - LSBio	
CatalogID:	LS-B2290
Validation:	This antibody replaces catalog number LS-C55044. It has been validated for use in the following assays: IHC-P.
Target:	karyopherin alpha 4 (importin alpha 3) (KPNA4)
Synonyms:	KPNA4 Antibody, Importin subunit alpha-4 Antibody, Importin alpha Q1 Antibody, Karyopherin subunit alpha-4 Antibody, SRP3 Antibody, IPOA3 Antibody, QIP1 Antibody
Host	KPNA4 antibody was produced in Goat
Clonality:	Polyclonal
Immunogen Species:	QIP1 / KPNA4 antibody was raised against Human
Antigen Type:	Synthetic peptide
Immunogen:	QIP1 / KPNA4 antibody was raised against synthetic peptide C-NSSANVPTTEGFQF from the C-terminus of human KPNA4 (NP_002259.1). Percent identity by BLAST analysis: Human, Gorilla, Gibbon, Monkey, Marmoset, Bovine, Dog, Bat, Hamster, Elephant, Panda, Horse, Rabbit, Opossum (100%); Mouse, Rat, Turkey, Chicken, Platypus, Xenopus (92%); Zebrafish (85%).
Specificity:	Human KPNA4.
Epitope:	C-Terminus
Reactivity:	Human, Gorilla, Gibbon, Monkey, Bat, Bovine, Dog, Hamster, Horse, Rabbit
Predicted Reactivity:	Mouse, Rat, Chicken, Xenopus
Purification:	Immunoaffinity purified
Presentation:	Tris-buffered saline, pH 7.3, 0.5% BSA, 0.02% sodium azide
Recommended Storage:	Store at -20°C. Minimize freezing and thawing.
Usage Summary:	Immunohistochemistry: LS-B2290 was validated for use in immunohistochemistry on a panel of 21 formalin-fixed, paraffin-embedded (FFPE) human tissues after heat induced antigen retrieval in pH 6.0 citrate buffer. After incubation with the primary antibody, slides were incubated with biotinylated secondary antibody, followed by alkaline phosphatase-streptavidin and chromogen. The stained slides were evaluated by a pathologist to confirm staining specificity. The optimal working concentration for LS-B2290 was determined to be 5 ug/ml.
Uses:	IHC - Paraffin (5 µg/ml), Western blot (0.2 - 1 µg/ml), ELISA (Optimal dilution to be determined by the researcher)
Size:	50 µg
Concentration:	0.5 mg/ml

Immunohistochemistry Image:



Anti-KPNA4 antibody IHC of human small intestine. Immunohistochemistry of formalin-fixed, paraffin-embedded tissue after heat-induced antigen retrieval. Antibody LS-B2290 concentration 5 ug/ml.

Western Blot Image:



Antibody staining (0.5 ug/ml) of Human Testis lysate (RIPA buffer, 35 ug total protein per lane). Primary incubated for 1 hour. Detected by Western blot of chemiluminescence.

Requested From:

Japan

Laboratory Reagent For In Vitro Research Use Only

Not for resale without prior written consent from LifeSpan BioSciences, Inc.

Created on 9/23/2014

© 2014 LifeSpan BioSciences