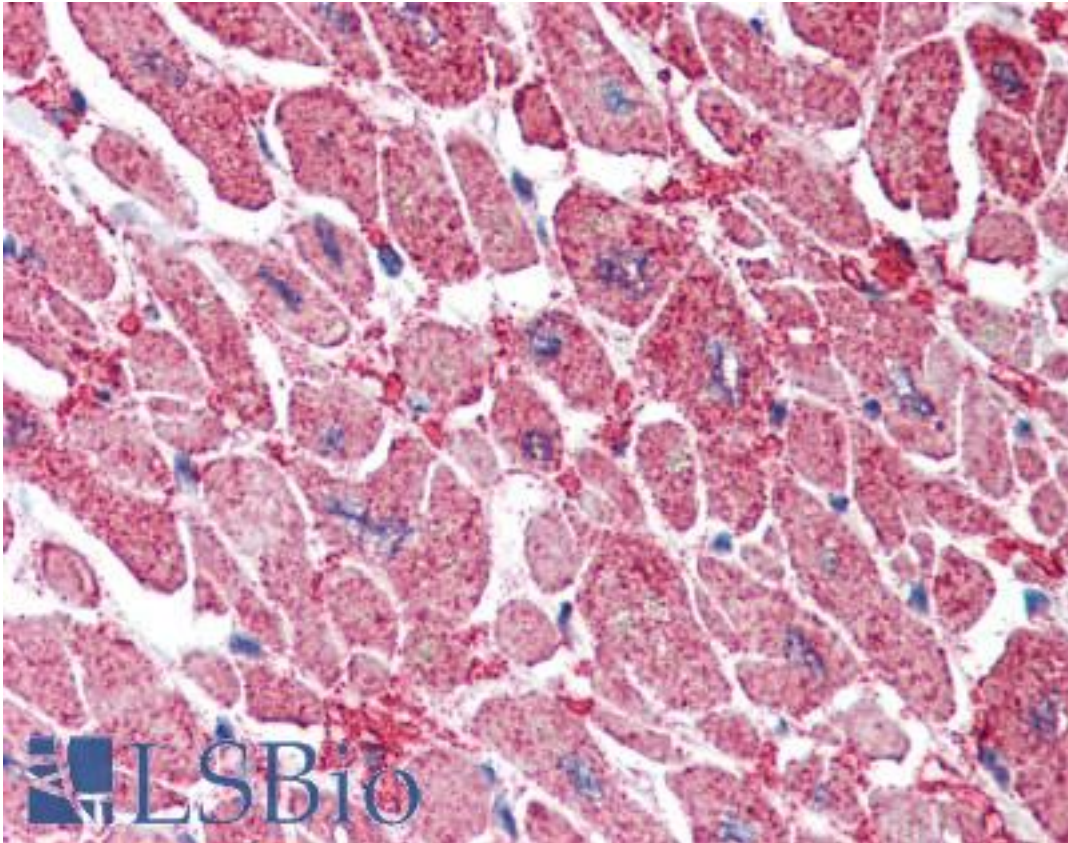


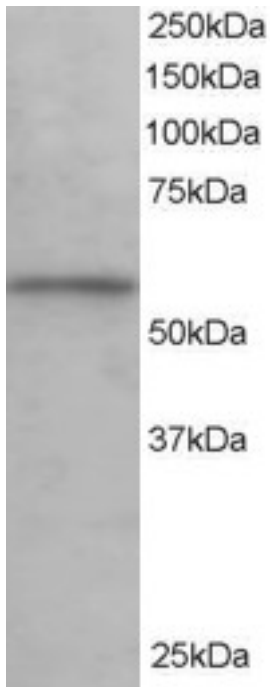
KPNA3 / Importin Alpha 4 Goat anti-Human Polyclonal (C-Terminus) Antibody - LS-B2289 - LSBio	
<b>CatalogID:</b>	LS-B2289
<b>Validation:</b>	This antibody replaces catalog number LS-C55043. It has been validated for use in the following assays: IHC-P.
<b>Target:</b>	karyopherin alpha 3 (importin alpha 4) (KPNA3)
<b>Synonyms:</b>	KPNA3 Antibody, Importin alpha-3 Antibody, Importin alpha Q2 Antibody, Karyopherin subunit alpha-3 Antibody, Importin-alpha-Q2 Antibody, IPOA4 Antibody, Qip2 Antibody, SRP1 Antibody, HSRP1 Antibody, Importin alpha 4 Antibody, Importin subunit alpha-3 Antibody, SRP1-gamma Antibody, SRP1gamma Antibody, SRP4 Antibody
<b>Host</b>	KPNA3 antibody was produced in Goat
<b>Clonality:</b>	Polyclonal
<b>Immunogen Species:</b>	KPNA3 / Importin Alpha 4 antibody was raised against Human
<b>Antigen Type:</b>	Synthetic peptide
<b>Immunogen:</b>	KPNA3 / Importin Alpha 4 antibody was raised against synthetic peptide C-DPTANLQTKEFNF from the C-terminus of human KPNA3 (NP_002258.2). Percent identity by BLAST analysis: Human, Gibbon, Monkey, Marmoset, Mouse, Rat, Bovine, Dog, Bat, Hamster, Elephant, Panda, Horse, Rabbit, Pig, Opossum, Turkey, Chicken, Platypus, Lizard (100%); Xenopus (85%).
<b>Specificity:</b>	Human KPNA3.
<b>Epitope:</b>	C-Terminus
<b>Reactivity:</b>	Human, Gibbon, Monkey, Mouse, Rat, Bat, Bovine, Dog, Hamster, Horse, Pig, Rabbit, Chicken
<b>Purification:</b>	Immunoaffinity purified
<b>Presentation:</b>	Tris-buffered saline, pH 7.3, 0.5% BSA, 0.02% sodium azide
<b>Recommended Storage:</b>	Store at -20°C. Minimize freezing and thawing.
<b>Usage Summary:</b>	Immunohistochemistry: LS-B2289 was validated for use in immunohistochemistry on a panel of 21 formalin-fixed, paraffin-embedded (FFPE) human tissues after heat induced antigen retrieval in pH 6.0 citrate buffer. After incubation with the primary antibody, slides were incubated with biotinylated secondary antibody, followed by alkaline phosphatase-streptavidin and chromogen. The stained slides were evaluated by a pathologist to confirm staining specificity. The optimal working concentration for LS-B2289 was determined to be 5 ug/ml.
<b>Uses:</b>	IHC - Paraffin (5 µg/ml), Western blot (0.1 - 0.5 µg/ml), ELISA (Optimal dilution to be determined by the researcher)
<b>Size:</b>	50 µg
<b>Concentration:</b>	0.5 mg/ml

**Immunohistochemistry Image:**



Anti-KPNA3 antibody IHC of human heart. Immunohistochemistry of formalin-fixed, paraffin-embedded tissue after heat-induced antigen retrieval. Antibody LS-B2289 concentration 5 ug/ml.

**Western Blot Image:**



Antibody staining (0.1 ug/ml) of Human Testis lysate (RIPA buffer, 35 ug total protein per lane). Primary incubated for 1 hour. Detected by Western blot of chemiluminescence.

**Requested From:**

Japan

Laboratory Reagent For In Vitro Research Use Only

Not for resale without prior written consent from LifeSpan BioSciences, Inc.

Created on 9/23/2014

© 2014 LifeSpan BioSciences