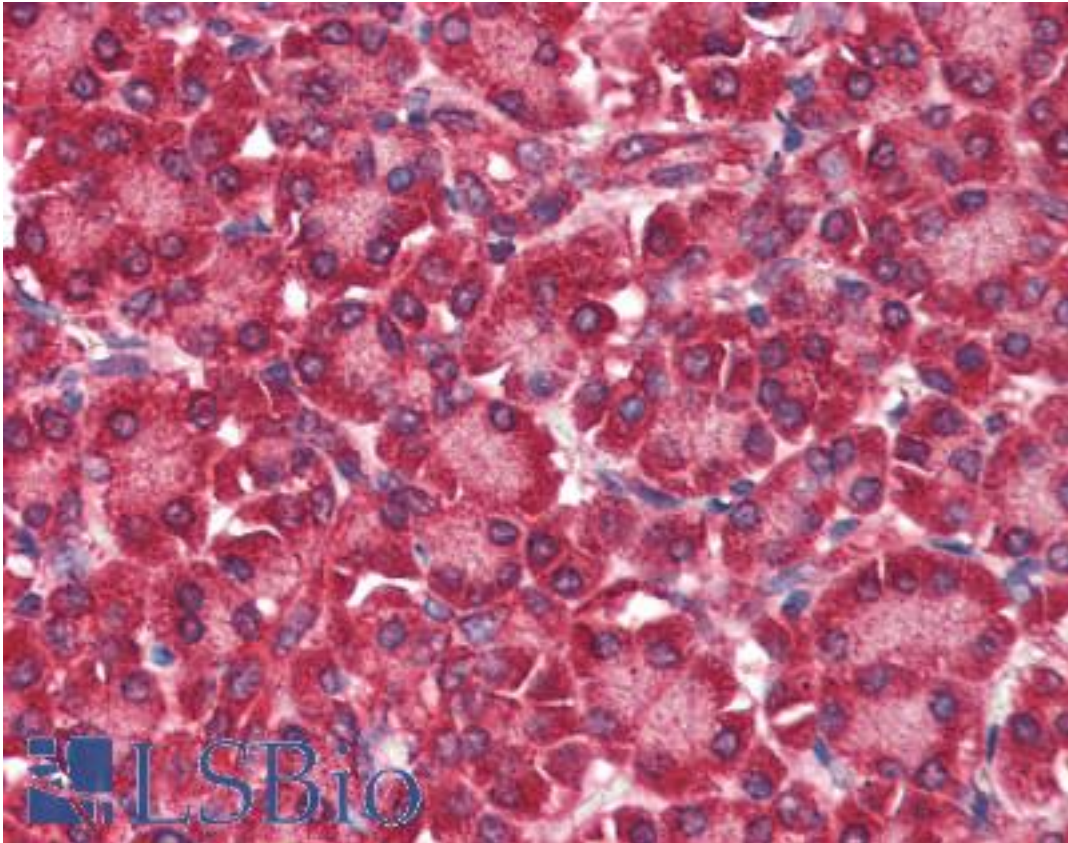


EIF4ENIF1 / 4E-T Goat anti-Human Polyclonal (C-Terminus) Antibody - LS-B2288 - LSBio	
CatalogID:	LS-B2288
Validation:	This antibody replaces catalog number LS-C54427. It has been validated for use in the following assays: IHC-P.
Target:	eukaryotic translation initiation factor 4E nuclear import factor 1 (EIF4ENIF1)
Synonyms:	EIF4ENIF1 Antibody, 4E-T Antibody, EIF4E transporter Antibody, EIF4E-transporter Antibody, Clast4 Antibody
Host	EIF4ENIF1 antibody was produced in Goat
Clonality:	Polyclonal
Immunogen Species:	EIF4ENIF1 / 4E-T antibody was raised against Human
Antigen Type:	Synthetic peptide
Immunogen:	EIF4ENIF1 / 4E-T antibody was raised against synthetic peptide C-AKVISVDELEYRQ from the C-terminus of human EIF4ENIF1 (NP_062817.2; NP_001157974.1). Percent identity by BLAST analysis: Human, Gorilla, Gibbon, Baboon, Monkey, Shrew, Bat, Dog, Elephant, Panda, Rabbit, Horse, Pig, Armadillo, Xenopus (100%); Marmoset, Mouse, Rat, Bovine, Hamster, Opossum, Turkey, Chicken, Platypus (92%); Medaka, Zebrafish, Stickleback (85%).
Specificity:	Human EIF4ENIF1. This antibody is expected to recognise isoform 1 (NP_062817.2) and isoform b (NP_001157974.1). Reported variants represent identical protein (NP_062817.2; NP_001157973.1).
Epitope:	C-Terminus
Reactivity:	Human, Gorilla, Gibbon, Bat, Dog, Horse, Pig, Rabbit, Xenopus
Predicted Reactivity:	Monkey, Mouse, Rat, Bovine, Hamster, Chicken
Purification:	Immunoaffinity purified
Presentation:	Tris-buffered saline, pH 7.3, 0.5% BSA, 0.02% sodium azide
Recommended Storage:	Store at -20°C. Minimize freezing and thawing.
Usage Summary:	Immunohistochemistry: LS-B2288 was validated for use in immunohistochemistry on a panel of 21 formalin-fixed, paraffin-embedded (FFPE) human tissues after heat induced antigen retrieval in pH 6.0 citrate buffer. After incubation with the primary antibody, slides were incubated with biotinylated secondary antibody, followed by alkaline phosphatase-streptavidin and chromogen. The stained slides were evaluated by a pathologist to confirm staining specificity. The optimal working concentration for LS-B2288 was determined to be 5 µg/ml.
Uses:	IHC - Paraffin (5 µg/ml), Western blot (0.25 - 0.5 µg/ml), ELISA (Optimal dilution to be determined by the researcher)
Size:	50 µg
Concentration:	0.5 mg/ml

Immunohistochemistry Image:



Anti-EIF4ENIF1 antibody IHC of human pancreas. Immunohistochemistry of formalin-fixed, paraffin-embedded tissue after heat-induced antigen retrieval. Antibody LS-B2288 concentration 5 ug/ml.

Western Blot Image:



Antibody staining (0.25 ug/ml) of 293 lysate (RIPA buffer, 35 ug total protein per lane).
Primary incubated for 1 hour. Detected by Western blot of chemiluminescence.

Requested From:

Japan

Laboratory Reagent For In Vitro Research Use Only

Not for resale without prior written consent from LifeSpan BioSciences, Inc.

Created on 9/23/2014

© 2014 LifeSpan BioSciences