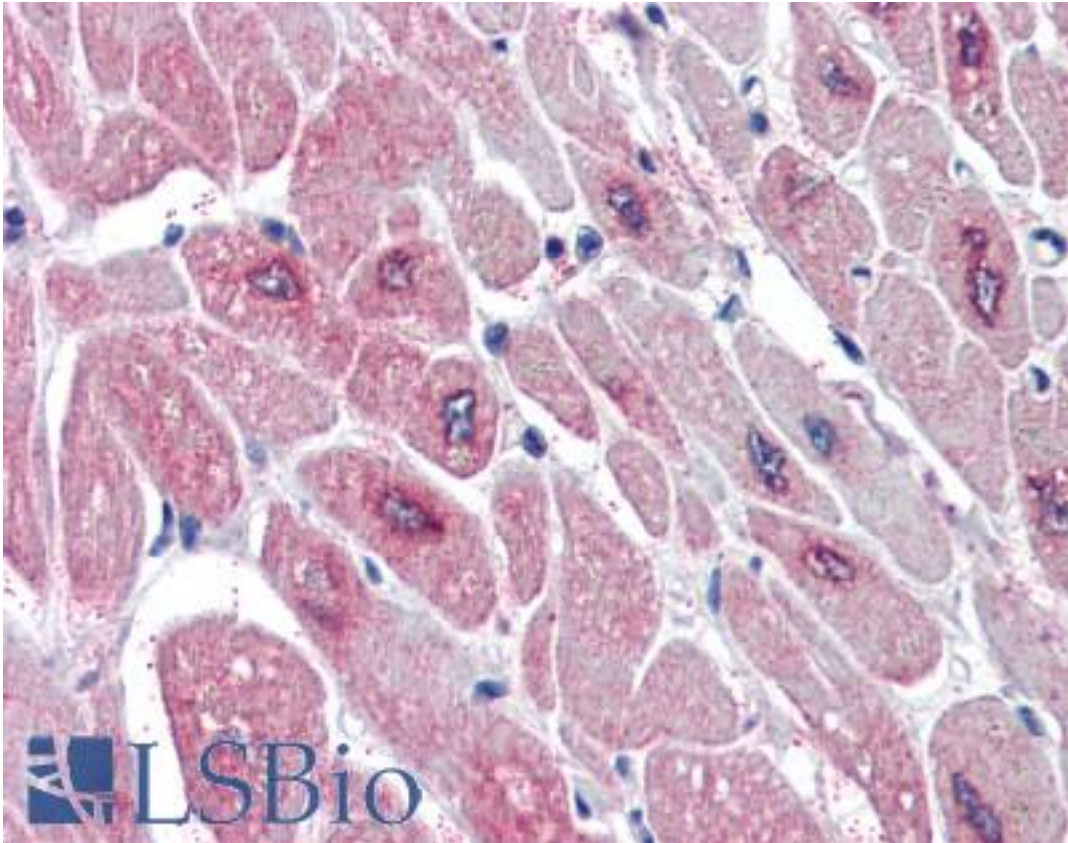


PARD6A / PAR6 Goat anti-Human Polyclonal (C-Terminus) Antibody - LS-B2287 - LSBio	
CatalogID:	LS-B2287
Validation:	This antibody replaces catalog number LS-C55233. It has been validated for use in the following assays: IHC-P.
Target:	par-6 family cell polarity regulator alpha (PARD6A)
Synonyms:	PARD6A Antibody, PAR-6 alpha Antibody, PAR6A Antibody, Tax interaction protein 40 Antibody, Tax-interacting protein 40 Antibody, PAR-6 Antibody, PAR-6A Antibody, PAR6C Antibody, TIP-40 Antibody, PAR6 Antibody, PAR6alpha Antibody, TAX40 Antibody
Host	PARD6A antibody was produced in Goat
Clonality:	Polyclonal
Immunogen Species:	PARD6A / PAR6 antibody was raised against Human
Antigen Type:	Synthetic peptide
Immunogen:	PARD6A / PAR6 antibody was raised against synthetic peptide C-GSRIRGDGSGFSL from the C-terminus of human PARD6A / PAR6 (NP_058644.1; NP_001032358.1). Percent identity by BLAST analysis: Human, Gorilla (100%); Marmoset, Bovine, Elephant (92%); Gibbon, Dog, Bat, Panda, Rabbit, Horse (85%).
Specificity:	Human PARD6A / PAR6. This antibody is expected to recognise both reported isoforms (NP_058644.1; NP_001032358.1).
Epitope:	C-Terminus
Reactivity:	Human, Gorilla
Predicted Reactivity:	Monkey, Bovine
Purification:	Immunoaffinity purified
Presentation:	Tris-buffered saline, pH 7.3, 0.5% BSA, 0.02% sodium azide
Recommended Storage:	Store at -20°C. Minimize freezing and thawing.
Usage Summary:	Immunohistochemistry: LS-B2287 was validated for use in immunohistochemistry on a panel of 21 formalin-fixed, paraffin-embedded (FFPE) human tissues after heat induced antigen retrieval in pH 6.0 citrate buffer. After incubation with the primary antibody, slides were incubated with biotinylated secondary antibody, followed by alkaline phosphatase-streptavidin and chromogen. The stained slides were evaluated by a pathologist to confirm staining specificity. The optimal working concentration for LS-B2287 was determined to be 5 µg/ml.
Uses:	IHC - Paraffin (5 µg/ml), ELISA (1:8000) (Optimal dilution to be determined by the researcher)
Size:	50 µg
Concentration:	0.5 mg/ml

Immunohistochemistry Image:



Anti-PARD6A / PAR6 antibody IHC of human heart. Immunohistochemistry of formalin-fixed, paraffin-embedded tissue after heat-induced antigen retrieval. Antibody LS-B2287 concentration 5 ug/ml.

Requested From:

Japan

Laboratory Reagent For In Vitro Research Use Only

Not for resale without prior written consent from LifeSpan BioSciences, Inc.

Created on 9/23/2014

© 2014 LifeSpan BioSciences