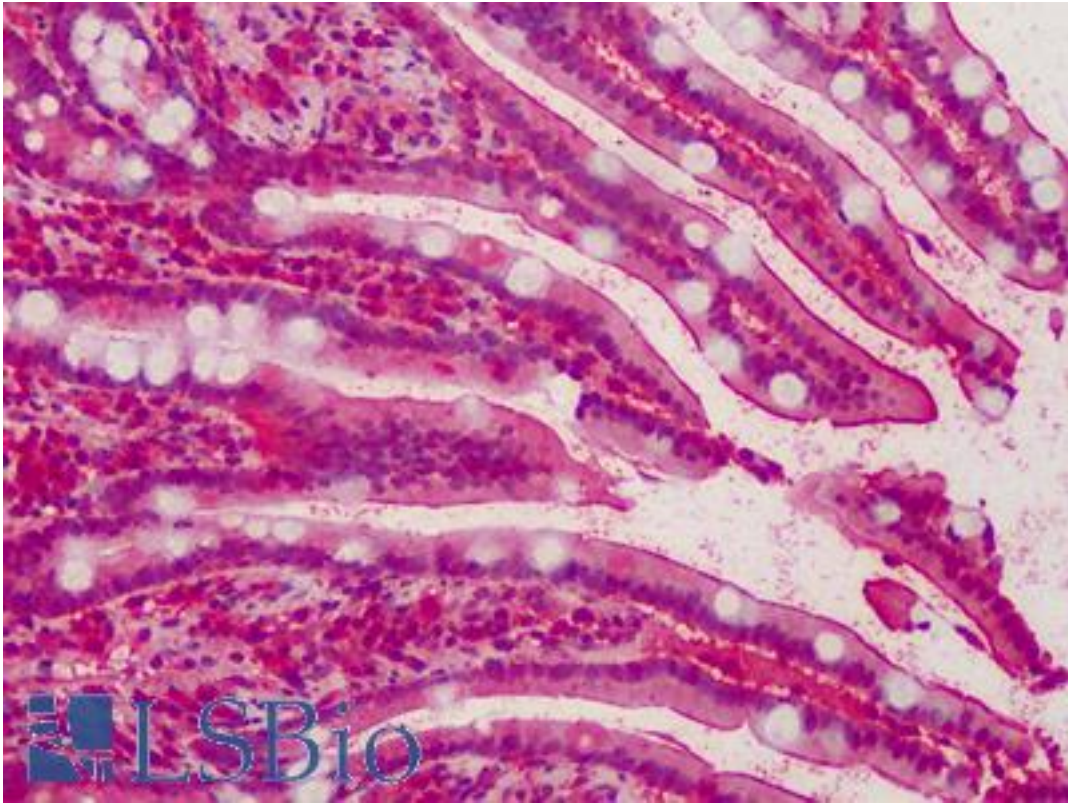


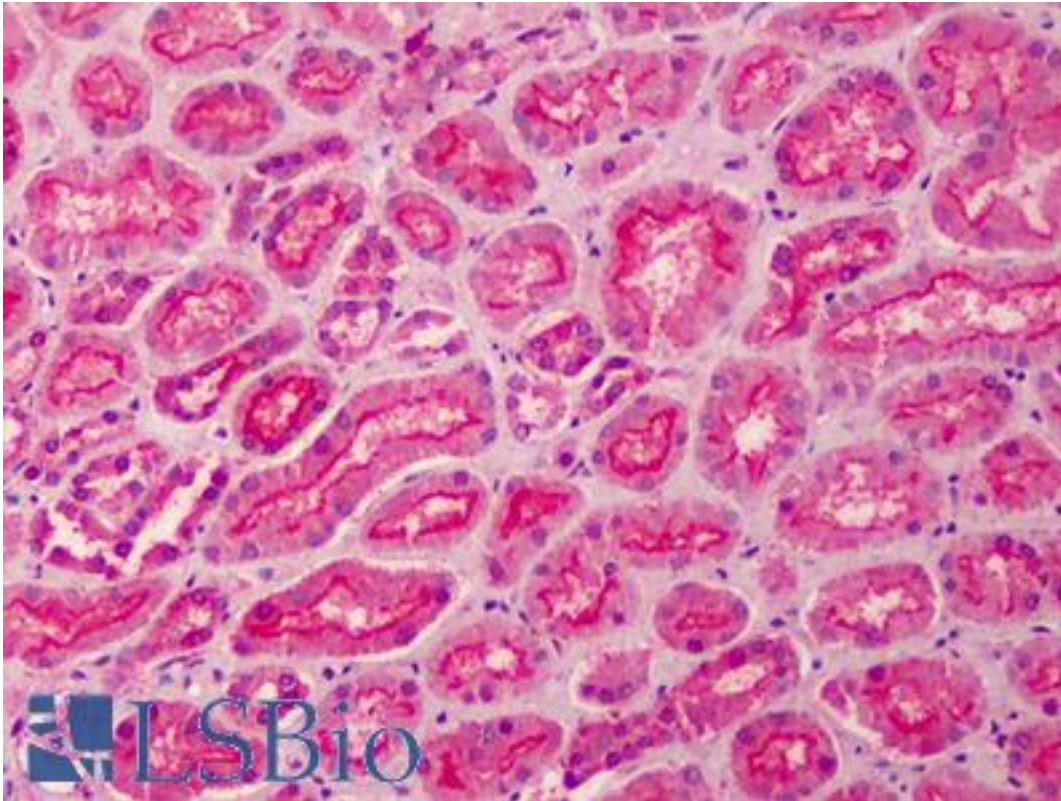
MPP5 Goat anti-Human Polyclonal (N-Terminus) Antibody - LS-B2285 - LSBio	
<b>CatalogID:</b>	LS-B2285
<b>Validation:</b>	This antibody replaces catalog number LS-C55229. It has been validated for use in the following assays: IHC-P.
<b>Target:</b>	membrane protein, palmitoylated 5 (MAGUK p55 subfamily member 5) (MPP5)
<b>Synonyms:</b>	MPP5 Antibody, MAGUK p55 subfamily member 5 Antibody, Stardust Antibody, PALS1 Antibody
<b>Host</b>	MPP5 antibody was produced in Goat
<b>Clonality:</b>	Polyclonal
<b>Immunogen Species:</b>	MPP5 antibody was raised against Human
<b>Antigen Type:</b>	Synthetic peptide
<b>Immunogen:</b>	MPP5 antibody was raised against synthetic peptide NKASPPFPLISNAQ-C from the N-terminus of human MPP5 (NP_071919.1). Percent identity by BLAST analysis: Human, Gorilla, Orangutan, Gibbon, Monkey, Marmoset, Bovine, Dog, Elephant, Panda, Horse, Rabbit, Pig (100%); Bat, Hamster, Turkey, Chicken (93%); Rat, Opossum (86%).
<b>Specificity:</b>	Human MPP5.
<b>Epitope:</b>	N-Terminus
<b>Reactivity:</b>	Human, Gorilla, Orangutan, Gibbon, Monkey, Bovine, Dog, Horse, Pig, Rabbit
<b>Predicted Reactivity:</b>	Bat, Hamster, Chicken
<b>Purification:</b>	Immunoaffinity purified
<b>Presentation:</b>	Tris-buffered saline, pH 7.3, 0.5% BSA, 0.02% sodium azide
<b>Recommended Storage:</b>	Store at -20°C. Minimize freezing and thawing.
<b>Usage Summary:</b>	Immunohistochemistry: LS-B2285 was validated for use in immunohistochemistry on a panel of 21 formalin-fixed, paraffin-embedded (FFPE) human tissues after heat induced antigen retrieval in pH 6.0 citrate buffer. After incubation with the primary antibody, slides were incubated with biotinylated secondary antibody, followed by alkaline phosphatase-streptavidin and chromogen. The stained slides were evaluated by a pathologist to confirm staining specificity. The optimal working concentration for LS-B2285 was determined to be 5 ug/ml.
<b>Uses:</b>	IHC - Paraffin (5 µg/ml), Western blot (1:32000) & (1 - 3 µg/ml), ELISA (1:32000) (Optimal dilution to be determined by the researcher)
<b>Size:</b>	50 µg
<b>Concentration:</b>	0.5 mg/ml

**Immunohistochemistry Image:**



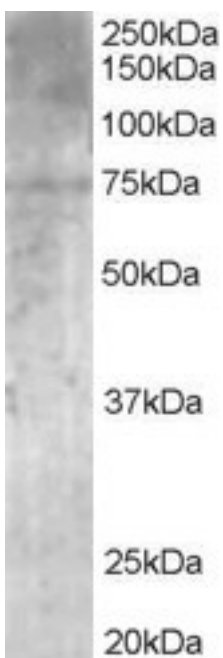
Anti-MPP5 antibody IHC of human small intestine. Immunohistochemistry of formalin-fixed, paraffin-embedded tissue after heat-induced antigen retrieval. Antibody LS-B2285 concentration 5 ug/ml.

**Immunohistochemistry Image:**



Anti-MPP5 antibody IHC of human kidney. Immunohistochemistry of formalin-fixed, paraffin-embedded tissue after heat-induced antigen retrieval. Antibody LS-B2285 concentration 5 ug/ml.

**Western Blot Image:**



Antibody (1 ug/ml) staining of Human Brain lysate (35 ug protein in RIPA buffer). Primary incubation was 1 hour. Detected by chemiluminescence.

<b>Requested From:</b>	Japan
Laboratory Reagent For In Vitro Research Use Only	
Not for resale without prior written consent from LifeSpan BioSciences, Inc.	
Created on 9/23/2014	
© 2014 LifeSpan BioSciences	