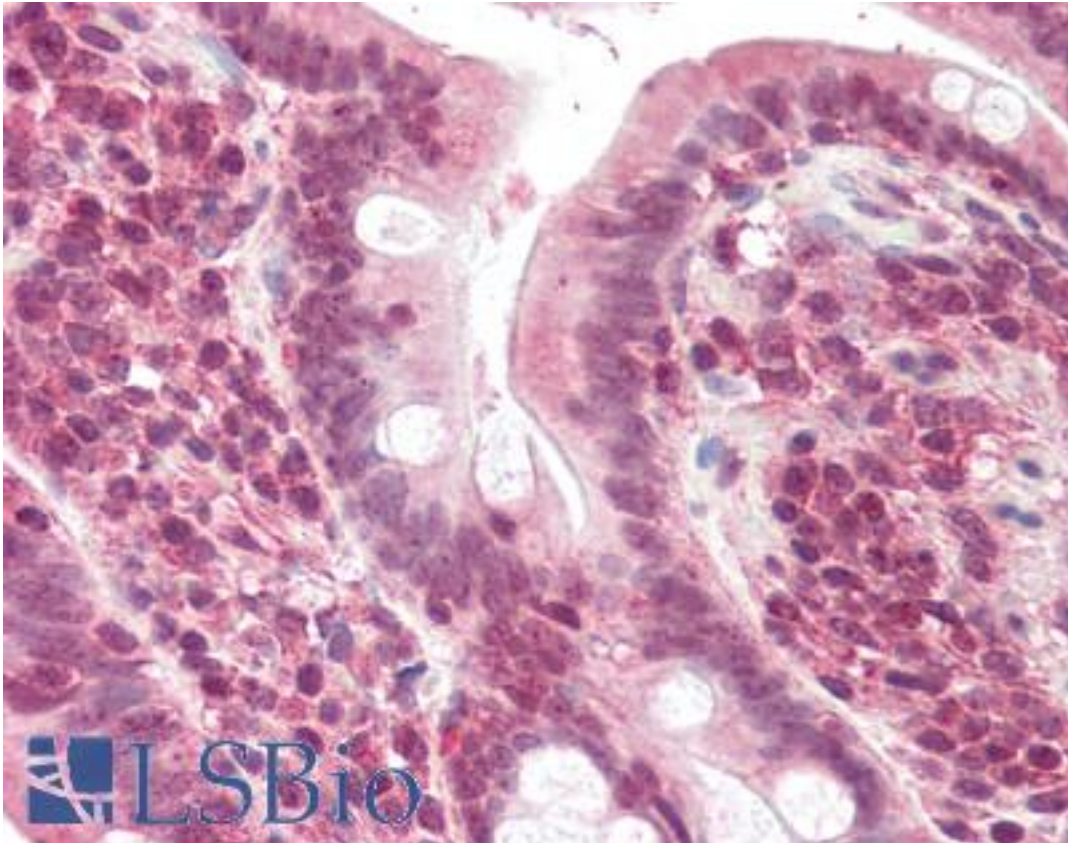


POLL / DNA Polymerase Lambda Goat anti-Human Polyclonal (C-Terminus) Antibody - LS-B2284 - LSBio	
CatalogID:	LS-B2284
Validation:	This antibody replaces catalog number LS-C55301. It has been validated for use in the following assays: IHC-P.
Target:	polymerase (DNA directed), lambda (POLL)
Synonyms:	POLL Antibody, DNA polymerase beta-2 Antibody, DNA polymerase beta-N Antibody, DNA polymerase lambda Antibody, DNA polymerase kappa Antibody, Pol beta2 Antibody, BETAN Antibody, Pol Lambda Antibody, POLKAPPA Antibody
Host	POLL antibody was produced in Goat
Clonality:	Polyclonal
Immunogen Species:	POLL / DNA Polymerase Lambda antibody was raised against Human
Antigen Type:	Synthetic peptide
Immunogen:	POLL / DNA Polymerase Lambda antibody was raised against synthetic peptide C-LGLPYREPAERDW from the C-terminus of human POLL (NP_037406.1). Percent identity by BLAST analysis: Human, Gorilla, Orangutan, Gibbon, Baboon, Monkey, Marmoset, Mouse, Rat, Bovine, Bat, Hamster, Elephant, Panda, Rabbit, Pig (100%); Dog, Opossum, Turkey, Chicken (92%); Xenopus, Zebrafish, Sea anemone (85%).
Specificity:	Human POLL. It has been brought to our attention that this product may crossreact with Pol beta (NP_002681), an evolutionarily related polymerase with a predicted size of 39 kDa. The overall % of identity is not very high (about 32% in the core) but considering only the peptide that we used as immunogen the two share the sequence YREP**R** at the C-terminus. Further the protein structures appear to be very similar in this region.
Epitope:	C-Terminus
Reactivity:	Human, Gorilla, Orangutan, Gibbon, Monkey, Mouse, Rat, Bat, Bovine, Hamster, Pig, Rabbit
Predicted Reactivity:	Dog, Chicken
Purification:	Immunoaffinity purified
Presentation:	Tris-buffered saline, pH 7.3, 0.5% BSA, 0.02% sodium azide
Recommended Storage:	Store at -20°C. Minimize freezing and thawing.
Usage Summary:	Immunohistochemistry: LS-B2284 was validated for use in immunohistochemistry on a panel of 21 formalin-fixed, paraffin-embedded (FFPE) human tissues after heat induced antigen retrieval in pH 6.0 citrate buffer. After incubation with the primary antibody, slides were incubated with biotinylated secondary antibody, followed by alkaline phosphatase-streptavidin and chromogen. The stained slides were evaluated by a pathologist to confirm staining specificity. The optimal working concentration for LS-B2284 was determined to be 5 µg/ml.
Uses:	IHC - Paraffin (5 µg/ml), ELISA (1:32000) (Optimal dilution to be determined by the researcher)
Size:	50 µg
Concentration:	0.5 mg/ml

Immunohistochemistry Image:



Anti-POLL antibody IHC of human small intestine. Immunohistochemistry of formalin-fixed, paraffin-embedded tissue after heat-induced antigen retrieval. Antibody LS-B2284 concentration 5 ug/ml.

Requested From:

Japan

Laboratory Reagent For In Vitro Research Use Only

Not for resale without prior written consent from LifeSpan BioSciences, Inc.

Created on 9/23/2014

© 2014 LifeSpan BioSciences