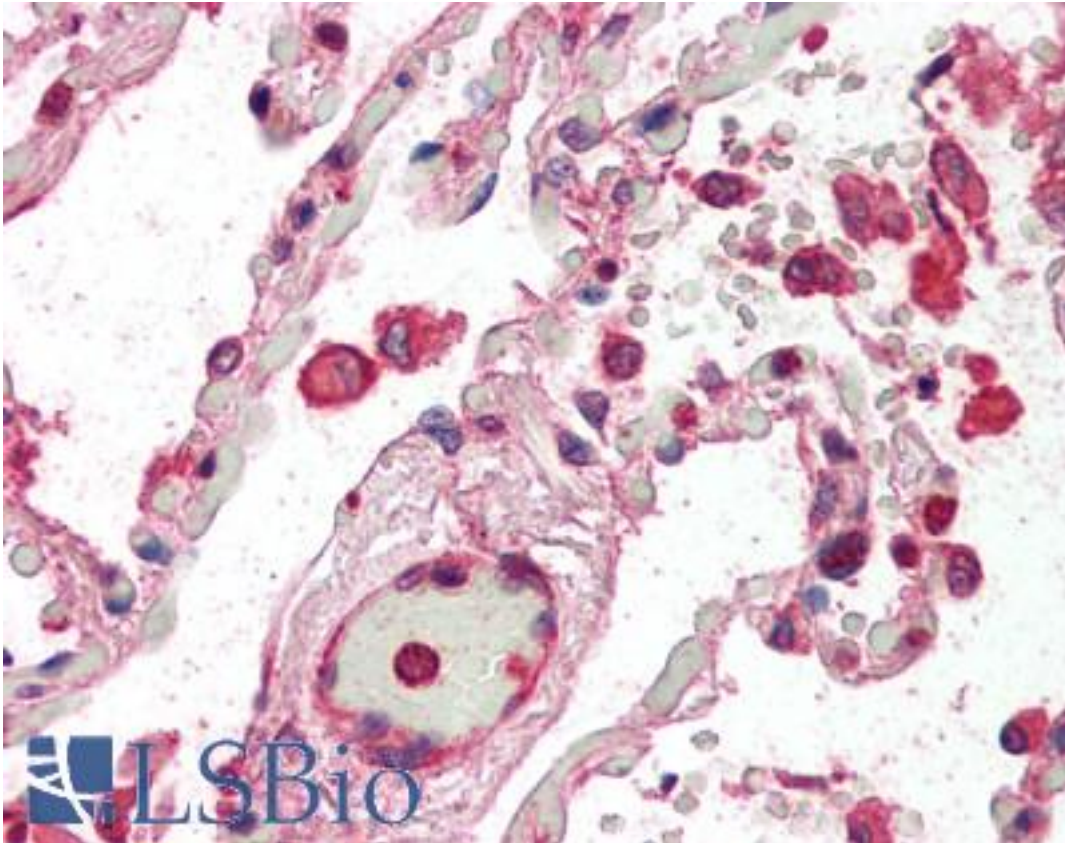


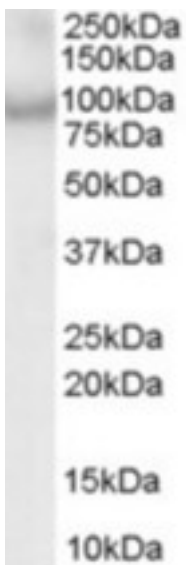
ACAP2 / Centaurin Beta 2 Goat anti-Human Polyclonal (C-Terminus) Antibody - LS-B2282 - LSBio	
<b>CatalogID:</b>	LS-B2282
<b>Validation:</b>	This antibody replaces catalog number LS-C54641. It has been validated for use in the following assays: IHC-P.
<b>Target:</b>	ArfGAP with coiled-coil, ankyrin repeat and PH domains 2 (ACAP2)
<b>Synonyms:</b>	ACAP2 Antibody, Centaurin, beta 2 Antibody, CNT-B2 Antibody, CENTB2 Antibody, KIAA0041 Antibody, Centaurin-beta-2 Antibody
<b>Host</b>	ACAP2 antibody was produced in Goat
<b>Clonality:</b>	Polyclonal
<b>Immunogen Species:</b>	ACAP2 / Centaurin Beta 2 antibody was raised against Human
<b>Antigen Type:</b>	Synthetic peptide
<b>Immunogen:</b>	ACAP2 / Centaurin Beta 2 antibody was raised against synthetic peptide C-EKLNRFQQDSQKF from the C-terminus of human ACAP2 / CENTB2 (NP_036419.3). Percent identity by BLAST analysis: Human, Gorilla, Gibbon, Monkey, Marmoset, Mouse, Rat, Bovine, Dog, Bat, Panda, Horse, Rabbit, Platypus (100%); Elephant, Turkey, Chicken (92%).
<b>Specificity:</b>	Human ACAP2 / CENTB2.
<b>Epitope:</b>	C-Terminus
<b>Reactivity:</b>	Human, Gorilla, Gibbon, Monkey, Mouse, Rat, Bat, Bovine, Dog, Horse, Rabbit
<b>Predicted Reactivity:</b>	Chicken
<b>Purification:</b>	Immunoaffinity purified
<b>Presentation:</b>	Tris-buffered saline, pH 7.3, 0.5% BSA, 0.02% sodium azide
<b>Recommended Storage:</b>	Store at -20°C. Minimize freezing and thawing.
<b>Usage Summary:</b>	Immunohistochemistry: LS-B2282 was validated for use in immunohistochemistry on a panel of 21 formalin-fixed, paraffin-embedded (FFPE) human tissues after heat induced antigen retrieval in pH 6.0 citrate buffer. After incubation with the primary antibody, slides were incubated with biotinylated secondary antibody, followed by alkaline phosphatase-streptavidin and chromogen. The stained slides were evaluated by a pathologist to confirm staining specificity. The optimal working concentration for LS-B2282 was determined to be 5 ug/ml.
<b>Uses:</b>	IHC - Paraffin (5 µg/ml), Western blot (1:32000) & (1 - 3 µg/ml), ELISA (1:32000) (Optimal dilution to be determined by the researcher)
<b>Size:</b>	50 µg
<b>Concentration:</b>	0.5 mg/ml

**Immunohistochemistry Image:**



Anti-ACAP2 / CENTB2 antibody IHC of human lung. Immunohistochemistry of formalin-fixed, paraffin-embedded tissue after heat-induced antigen retrieval. Antibody LS-B2282 concentration 5 ug/ml.

**Western Blot Image:**



Antibody (1 ug/ml) staining of MOLT4 lysate (35 ug protein in RIPA buffer). Primary incubation was 1 hour. Detected by chemiluminescence.

**Requested From:**

Japan

Laboratory Reagent For In Vitro Research Use Only

Not for resale without prior written consent from LifeSpan BioSciences, Inc.

Created on 9/23/2014

© 2014 LifeSpan BioSciences