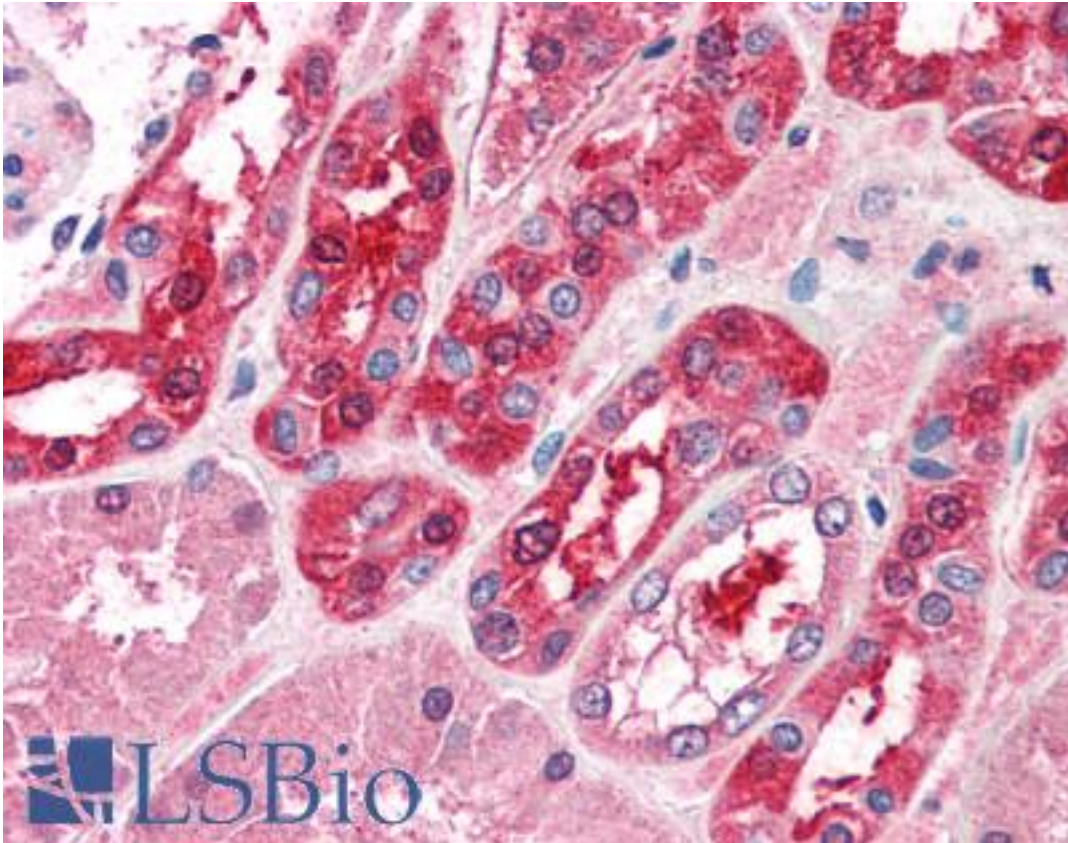


TRIM1 / MID2 Goat anti-Human Polyclonal (C-Terminus) Antibody - LS-B2277 - LSBio	
CatalogID:	LS-B2277
Validation:	This antibody replaces catalog number LS-C54779. It has been validated for use in the following assays: IHC-P.
Target:	midline 2 (MID2)
Synonyms:	MID2 Antibody, FXY2 Antibody, Midin-2 Antibody, Midline-2 Antibody, Midin 2 Antibody, Midline 2 Antibody, Midline defect 2 Antibody, RNF60 Antibody, RING finger protein 60 Antibody, TRIM1 Antibody, Tripartite motif protein 1 Antibody
Host	MID2 antibody was produced in Goat
Clonality:	Polyclonal
Immunogen Species:	TRIM1 / MID2 antibody was raised against Human
Antigen Type:	Synthetic peptide
Immunogen:	TRIM1 / MID2 antibody was raised against synthetic peptide QESPYVSGMKTCH from the C-terminus of human MID2 (NP_036348.2; NP_438112.2). Percent identity by BLAST analysis: Human, Gorilla, Gibbon, Marmoset (100%); Mouse, Rat, Dog, Bat, Elephant, Panda, Horse, Pig, Opossum, Turkey, Chicken (92%); Hamster, Rabbit, Zebrafish, Stickleback (85%).
Specificity:	Human MID2. This antibody is expected to recognise both human isoforms of this protein.
Epitope:	C-Terminus
Reactivity:	Human, Gorilla, Gibbon, Monkey, Mouse
Predicted Reactivity:	Rat, Bat, Dog, Horse, Pig, Chicken
Purification:	Immunoaffinity purified
Presentation:	Tris-buffered saline, pH 7.3, 0.5% BSA, 0.02% sodium azide
Recommended Storage:	Store at -20°C. Minimize freezing and thawing.
Usage Summary:	Immunohistochemistry: LS-B2277 was validated for use in immunohistochemistry on a panel of 21 formalin-fixed, paraffin-embedded (FFPE) human tissues after heat induced antigen retrieval in pH 6.0 citrate buffer. After incubation with the primary antibody, slides were incubated with biotinylated secondary antibody, followed by alkaline phosphatase-streptavidin and chromogen. The stained slides were evaluated by a pathologist to confirm staining specificity. The optimal working concentration for LS-B2277 was determined to be 5 ug/ml.
Uses:	IHC - Paraffin (5 µg/ml), Western blot (1:32000) & (1 - 3 µg/ml), ELISA (1:32000) (Optimal dilution to be determined by the researcher)
Size:	50 µg
Concentration:	0.5 mg/ml

Immunohistochemistry Image:



Anti-MID2 antibody IHC of human kidney. Immunohistochemistry of formalin-fixed, paraffin-embedded tissue after heat-induced antigen retrieval. Antibody LS-B2277 concentration 5 ug/ml.

Western Blot Image:



Antibody (1 ug/ml) staining of mouse heart lysate (RIPA buffer, 35 ug total protein per lane). Primary incubated for 1 hour. Detected by Western blot of chemiluminescence.

Requested From:

Japan

Laboratory Reagent For In Vitro Research Use Only

Not for resale without prior written consent from LifeSpan BioSciences, Inc.

Created on 9/23/2014

© 2014 LifeSpan BioSciences