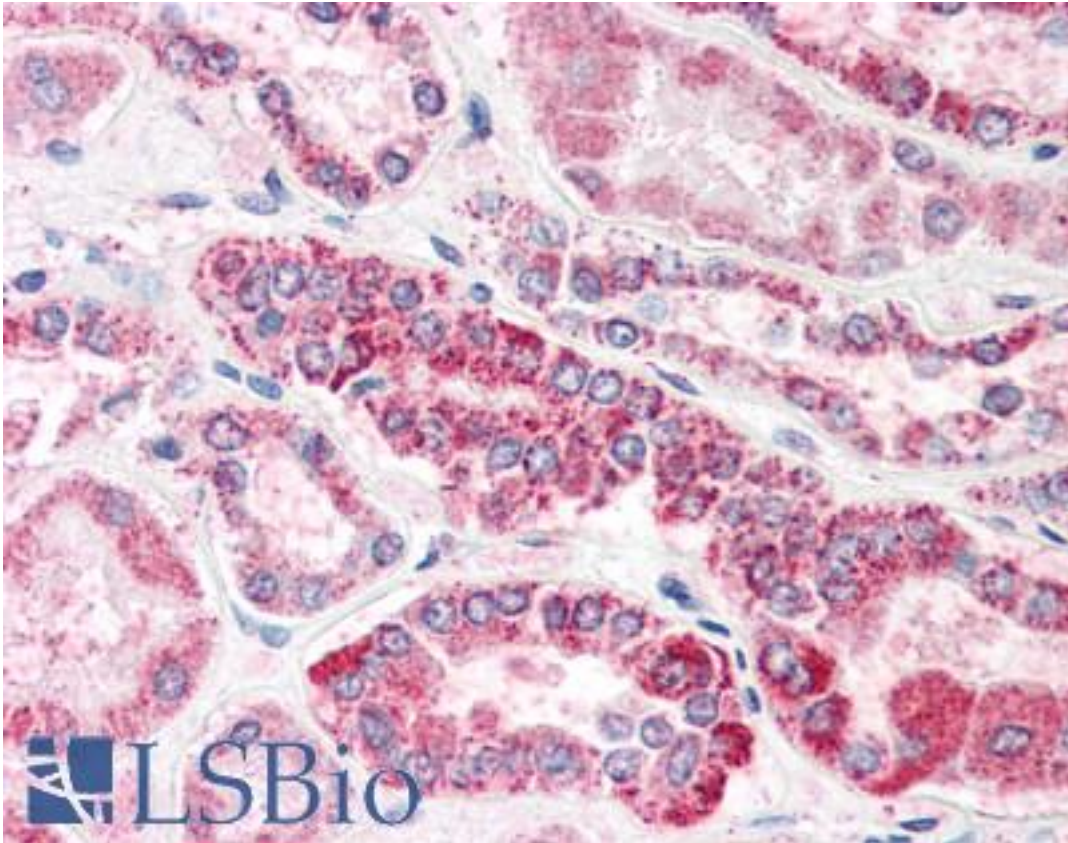


CED6 / GULP1 Goat anti-Human Polyclonal (C-Terminus) Antibody - LS-B2273 - LSBio

CatalogID:	LS-B2273
Validation:	This antibody replaces catalog number LS-C54952. It has been validated for use in the following assays: IHC-P.
Target:	GULP, engulfment adaptor PTB domain containing 1 (GULP1)
Synonyms:	GULP1 Antibody, Cell death protein 6 homolog Antibody, CED6 Antibody, Engulfment adapter protein Antibody, CED-6 Antibody, GULP Antibody, Protein GULP Antibody
Host	GULP1 antibody was produced in Goat
Clonality:	Polyclonal
Immunogen Species:	CED6 / GULP1 antibody was raised against Human
Antigen Type:	Synthetic peptide
Immunogen:	CED6 / GULP1 antibody was raised against synthetic peptide EGTVFCLDPLDSRC from the C-terminus of human GULP1 / CED6 (NP_057399.1). Percent identity by BLAST analysis: Human, Gorilla, Gibbon, Monkey, Marmoset, Mouse, Rat, Dog, Bovine, Hamster, Panda, Rabbit, Pig, Opossum, Turkey, Chicken (100%); Elephant, Horse, Sablefish, Pufferfish, Stickleback (93%); Bat (86%).
Specificity:	Human GULP1 / CED6.
Epitope:	C-Terminus
Reactivity:	Human, Gorilla, Gibbon, Monkey, Mouse, Rat, Bovine, Dog, Hamster, Pig, Rabbit, Chicken
Predicted Reactivity:	Horse
Purification:	Immunoaffinity purified
Presentation:	Tris-buffered saline, pH 7.3, 0.5% BSA, 0.02% sodium azide
Recommended Storage:	Store at -20°C. Minimize freezing and thawing.
Usage Summary:	Immunohistochemistry: LS-B2273 was validated for use in immunohistochemistry on a panel of 21 formalin-fixed, paraffin-embedded (FFPE) human tissues after heat induced antigen retrieval in pH 6.0 citrate buffer. After incubation with the primary antibody, slides were incubated with biotinylated secondary antibody, followed by alkaline phosphatase-streptavidin and chromogen. The stained slides were evaluated by a pathologist to confirm staining specificity. The optimal working concentration for LS-B2273 was determined to be 5 µg/ml.
Uses:	IHC - Paraffin (5 µg/ml), Western blot (0.2 - 0.6 µg/ml), ELISA (1:64000) (Optimal dilution to be determined by the researcher)
Size:	50 µg
Concentration:	0.5 mg/ml

Immunohistochemistry Image:



Anti-GULP1 / CED6 antibody IHC of human kidney. Immunohistochemistry of formalin-fixed, paraffin-embedded tissue after heat-induced antigen retrieval. Antibody LS-B2273 concentration 5 ug/ml.

Western Blot Image:



Antibody staining (0.2 ug/ml) of Human Placenta lysate (RIPA buffer, 30 ug total protein per lane). Primary incubated for 1 hour. Detected by Western blot of chemiluminescence.

Requested From:

Japan

Laboratory Reagent For In Vitro Research Use Only

Not for resale without prior written consent from LifeSpan BioSciences, Inc.

Created on 9/23/2014

© 2014 LifeSpan BioSciences