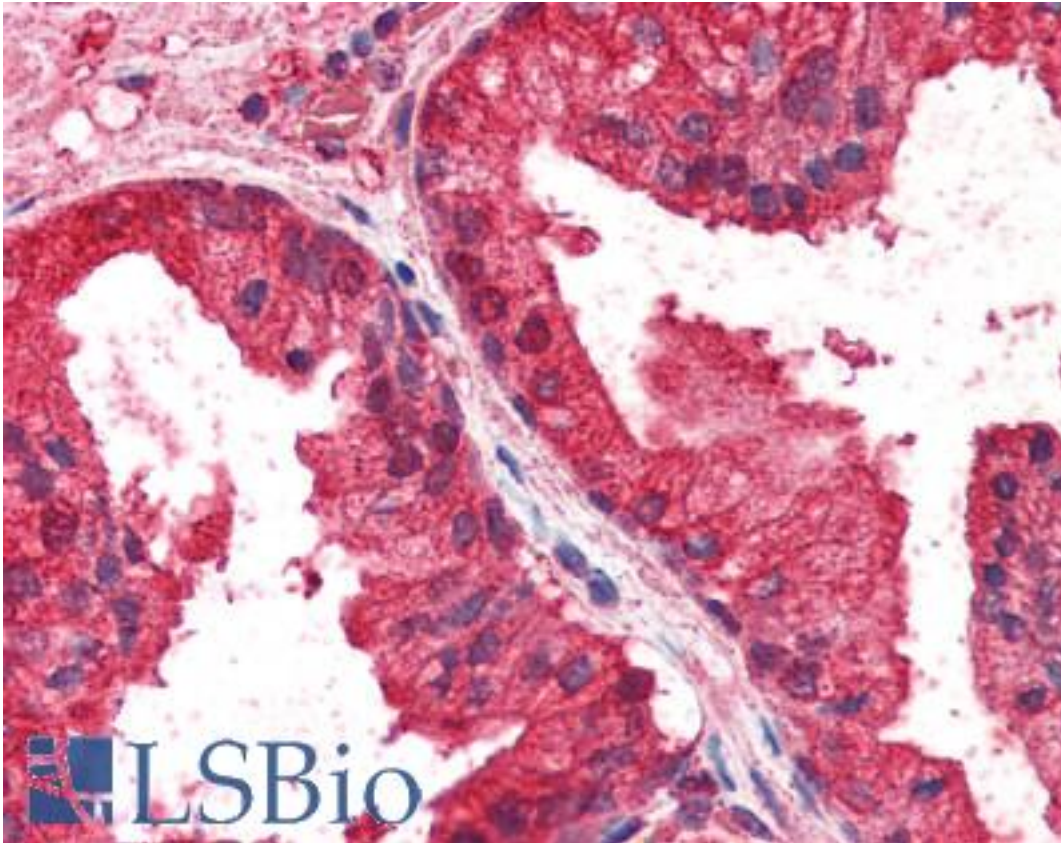


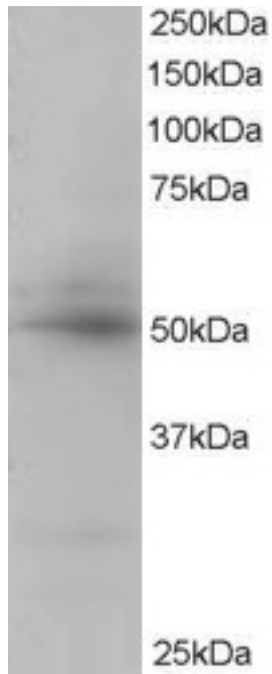
CREB3L4 / AIBZIP Goat anti-Human Polyclonal (C-Terminus) Antibody - LS-B2272 - LSBio	
CatalogID:	LS-B2272
Validation:	This antibody replaces catalog number LS-C54461. It has been validated for use in the following assays: IHC-P.
Target:	cAMP responsive element binding protein 3-like 4 (CREB3L4)
Synonyms:	CREB3L4 Antibody, AIBZIP Antibody, ATCE1 Antibody, Attaching to CRE-like 1 Antibody, HJAL Antibody, JAL Antibody, Tisp40 Antibody, CREB-4 Antibody, CREB4 Antibody
Host	CREB3L4 antibody was produced in Goat
Clonality:	Polyclonal
Immunogen Species:	CREB3L4 / AIBZIP antibody was raised against Human
Antigen Type:	Synthetic peptide
Immunogen:	CREB3L4 / AIBZIP antibody was raised against synthetic peptide C-PSGRIRSVLHADEM from the C-terminus of human CREB3L4 (NP_570968.1). Percent identity with other species by BLAST analysis: Human (100%), Gibbon (93%), Marmoset (93%), Gorilla (86%), Monkey (86%).
Specificity:	Human CREB3L4.
Epitope:	C-Terminus
Reactivity:	Human
Predicted Reactivity:	Gibbon, Monkey
Purification:	Immunoaffinity purified
Presentation:	Tris-buffered saline, pH 7.3, 0.5% BSA, 0.02% sodium azide
Recommended Storage:	Store at -20°C. Minimize freezing and thawing.
Usage Summary:	Immunohistochemistry: LS-B2272 was validated for use in immunohistochemistry on a panel of 21 formalin-fixed, paraffin-embedded (FFPE) human tissues after heat induced antigen retrieval in pH 6.0 citrate buffer. After incubation with the primary antibody, slides were incubated with biotinylated secondary antibody, followed by alkaline phosphatase-streptavidin and chromogen. The stained slides were evaluated by a pathologist to confirm staining specificity. The optimal working concentration for LS-B2272 was determined to be 2.5-5 ug/ml.
Uses:	IHC - Paraffin (2.5 - 5 µg/ml), Western blot (1:32000) & (0.5 - 2 µg/ml), ELISA (1:32000) (Optimal dilution to be determined by the researcher)
Size:	50 µg
Concentration:	0.5 mg/ml

Immunohistochemistry Image:



Anti-CREB3L4 antibody IHC of human prostate. Immunohistochemistry of formalin-fixed, paraffin-embedded tissue after heat-induced antigen retrieval. Antibody LS-B2272 concentration 5 ug/ml.

Western Blot Image:



Antibody staining (0.5 ug/ml) of Human Placenta lysate (RIPA buffer, 35 ug total protein per lane). Primary incubated for 1 hour. Detected by Western blot of chemiluminescence.

Requested From:

Japan

Laboratory Reagent For In Vitro Research Use Only

Not for resale without prior written consent from LifeSpan BioSciences, Inc.

Created on 9/23/2014

© 2014 LifeSpan BioSciences