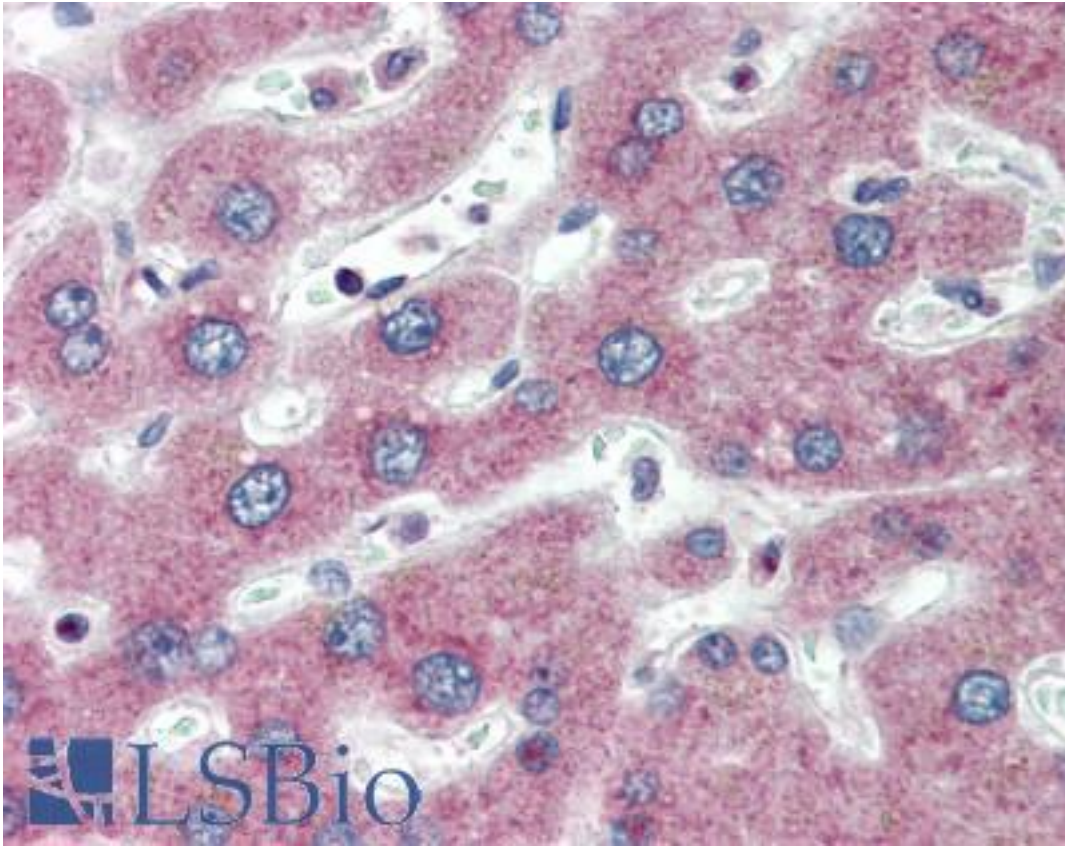


PTHR / PTHR1 Mouse anti-Human Monoclonal Antibody - LS-B2267 - LSBio	
CatalogID:	LS-B2267
Validation:	This antibody replaces catalog number LS-C25980. It has been validated for use in the following assays: IHC-P.
Target:	parathyroid hormone 1 receptor (PTH1R)
Synonyms:	PTH1R Antibody, Parathyroid hormone 1 receptor Antibody, Parathyroid hormone receptor 1 Antibody, PFE Antibody, Pth-related peptide receptor Antibody, PTHR Antibody, PTH/PTHr receptor Antibody, Pth/pthrp receptor Antibody, Parathyroid hormone receptor Antibody, PTH/PTHrP type I receptor Antibody, PTH1 receptor Antibody, PTHR1 Antibody, PTHrP-R Antibody, PTHrP-receptor Antibody
Family / Subfamily:	GPCR / Parathyroid hormone
Host	PTH1R antibody was produced in Mouse
Clonality:	Monoclonal
Isotype:	IgG1,k
Immunogen Species:	PTHR / PTHR1 antibody was raised against Human
Antigen Type:	Synthetic peptide
Immunogen:	PTHR / PTHR1 antibody was raised against synthetic peptide corresponding to aa146-169 of human PTH/PTHrP Receptor [RRCDRNGSWELVPGHNRTWANYSE]. Species sequence Homology: Mouse & rat (23/24aa). Percent identity by BLAST analysis: Human, Gorilla, Orangutan, Gibbon, Monkey, Marmoset, Elephant, Bovine, Dog, Horse, Pig (100%); Mouse, Rat, Hamster, Panda, Bat, Rabbit (96%); Opossum, Chicken (92%); Xenopus (88%).
Specificity:	Recognizes human PTH/PTHrP receptor, Mr 80kD, and the receptor dimer, Mr 160kD. A faint nonspecific band at 110kD is also detected. This antibody does not detect the PTH2 receptor.
Reactivity:	Human, Gorilla, Orangutan, Gibbon, Monkey, Bovine, Dog, Horse, Pig
Predicted Reactivity:	Mouse, Rat, Bat, Hamster, Rabbit, Chicken
Purification:	Protein G purified
Presentation:	PBS, pH 7.6, 0.07% sodium azide, 30% glycerol
Recommended Storage:	Long term: -20°C; Short term: +4°C. Avoid repeat freeze-thaw cycles.
Usage Summary:	Immunohistochemistry: LS-B2267 was validated for use in immunohistochemistry on a panel of 21 formalin-fixed, paraffin-embedded (FFPE) human tissues after heat induced antigen retrieval in pH 6.0 citrate buffer. After incubation with the primary antibody, slides were incubated with biotinylated secondary antibody, followed by alkaline phosphatase-streptavidin and chromogen. The stained slides were evaluated by a pathologist to confirm staining specificity. The optimal working concentration for LS-B2267 was determined to be 5 ug/ml. Detects PTH/PTHrP receptor in human kidney, vascular smooth muscle and ovary sections. Receptor was also detected in porcine oocytes.
Uses:	IHC - Paraffin (5 µg/ml), Western blot (0.5 - 2 µg/ml) (Optimal dilution to be determined by the researcher)
Size:	50 µg

Concentration:

1 mg/ml

Immunohistochemistry Image:



Anti-PTH1R antibody IHC of human liver. Immunohistochemistry of formalin-fixed, paraffin-embedded tissue after heat-induced antigen retrieval. Antibody LS-B2267 concentration 5 ug/ml.

Requested From:

Japan

Laboratory Reagent For In Vitro Research Use Only

Not for resale without prior written consent from LifeSpan BioSciences, Inc.

Created on 9/23/2014

© 2014 LifeSpan BioSciences