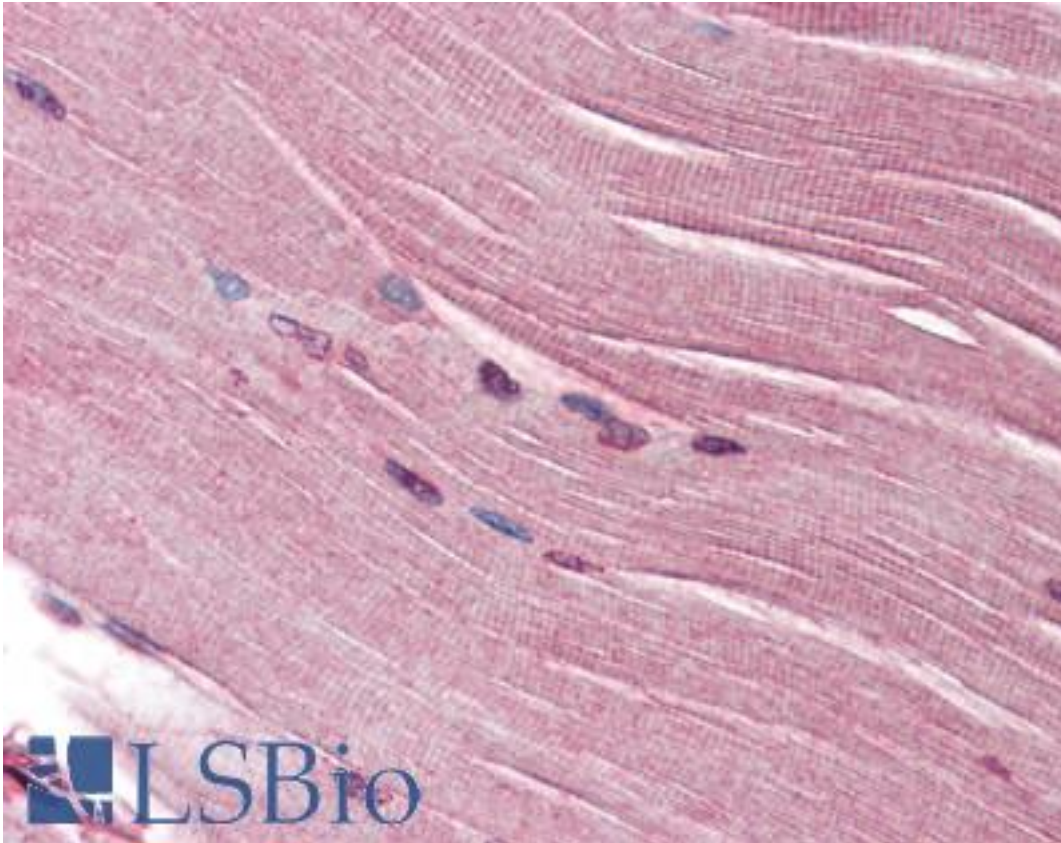


SH3GLB1 / Bif / Endophilin B1 Rabbit anti-Human Polyclonal Antibody - LS-B2260 - LSBio	
CatalogID:	LS-B2260
Validation:	This antibody replaces catalog number LS-C48642. It has been validated for use in the following assays: IHC-P.
Target:	SH3-domain GRB2-like endophilin B1 (SH3GLB1)
Synonyms:	SH3GLB1 Antibody, CGI-61 Antibody, Endophilin B1 Antibody, Endophilin-B1 Antibody, PPP1R70 Antibody, Bax-interacting factor 1 Antibody, Bif-1 Antibody, DJ612B15.2 Antibody, KIAA0491 Antibody, SH3-containing protein SH3GLB1 Antibody
Family / Subfamily:	Apoptosis
Host	SH3GLB1 antibody was produced in Rabbit
Clonality:	Polyclonal
Immunogen Species:	SH3GLB1 / Bif / Endophilin B1 antibody was raised against Human
Antigen Type:	Synthetic peptide
Immunogen:	SH3GLB1 / Bif / Endophilin B1 antibody was raised against synthetic peptide surrounding amino acid 351 of human BIF.
Specificity:	The antibody detects 40 kD BIF-1 in samples from human, mouse, and rat origins. Jurkat cell lysate and rat kidney tissue lysates can be used as positive controls.
Reactivity:	Human, Mouse, Rat
Purification:	Protein A purified
Presentation:	PBS, pH 7.2, 50% glycerol, 1% BSA, 0.02% Thimerosal.
Recommended Storage:	Long term: -70°C; Short term: -20°C
Usage Summary:	Immunohistochemistry: LS-B2260 was validated for use in immunohistochemistry on a panel of 21 formalin-fixed, paraffin-embedded (FFPE) human tissues after heat induced antigen retrieval in pH 6.0 citrate buffer. After incubation with the primary antibody, slides were incubated with biotinylated secondary antibody, followed by alkaline phosphatase-streptavidin and chromogen. The stained slides were evaluated by a pathologist to confirm staining specificity. The optimal working concentration for LS-B2260 was determined to be 2.5-5 ug/ml.
Uses:	IHC - Paraffin (2.5 - 5 µg/ml), Western blot (2 - 6 µg/ml) (Optimal dilution to be determined by the researcher)
Size:	50 µg
Concentration:	0.2 mg/ml

Immunohistochemistry Image:



Anti-SH3GLB1 / Bif-1 antibody IHC of human skeletal muscle. Immunohistochemistry of formalin-fixed, paraffin-embedded tissue after heat-induced antigen retrieval. Antibody LS-B2260 concentration 5 ug/ml.

Requested From:

Japan

Laboratory Reagent For In Vitro Research Use Only

Not for resale without prior written consent from LifeSpan BioSciences, Inc.

Created on 9/23/2014

© 2014 LifeSpan BioSciences