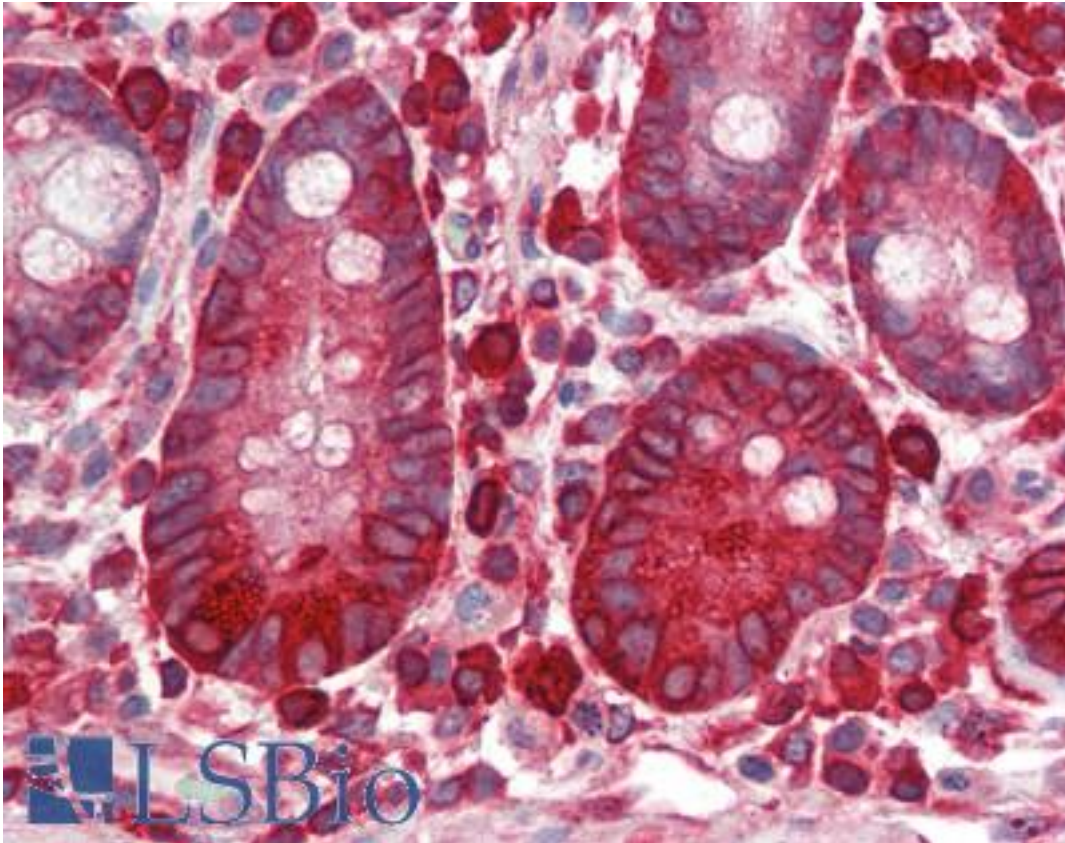


EEF2 / Elongation Factor 2 Rabbit anti-Human Polyclonal (pThr56) Antibody - LS-B2258 - LSBio	
<b>CatalogID:</b>	LS-B2258
<b>Validation:</b>	This antibody replaces catalog number LS-C6488. It has been validated for use in the following assays: IHC-P.
<b>Target:</b>	eukaryotic translation elongation factor 2 (EEF2)
<b>Synonyms:</b>	EEF2 Antibody, EEF-2 Antibody, EF-2 Antibody, Elongation factor 2 Antibody, Polypeptidyl-tRNA translocase Antibody, EF2 Antibody
<b>Host</b>	EEF2 antibody was produced in Rabbit
<b>Clonality:</b>	Polyclonal
<b>Isotype:</b>	IgG
<b>Immunogen Species:</b>	EEF2 / Elongation Factor 2 antibody was raised against Human
<b>Antigen Type:</b>	Synthetic phospho-peptide
<b>Immunogen:</b>	EEF2 / Elongation Factor 2 antibody was raised against synthetic phosphopeptide (KLH coupled) corresponding to residues surrounding Thr56 of human eEF2.
<b>Specificity:</b>	Detects endogenous levels of eEF2 only when phosphorylated at threonine 56. It does not recognize eEF2 phosphorylated at other sites.
<b>Epitope:</b>	pThr56
<b>Reactivity:</b>	Human, Monkey, Mouse, Rat, Hamster, Chicken
<b>Purification:</b>	Immunoaffinity purified
<b>Presentation:</b>	10 mM HEPES, pH 7.5, 150 mM sodium chloride, 0.1 mg/ml BSA, 50% glycerol. No preservative added.
<b>Recommended Storage:</b>	Long term: -20°C; Short term: +4°C. Avoid repeat freeze-thaw cycles.
<b>Usage Summary:</b>	Immunohistochemistry: LS-B2258 was validated for use in immunohistochemistry on a panel of 21 formalin-fixed, paraffin-embedded (FFPE) human tissues after heat induced antigen retrieval in pH 6.0 citrate buffer. After incubation with the primary antibody, slides were incubated with biotinylated secondary antibody, followed by alkaline phosphatase-streptavidin and chromogen. The stained slides were evaluated by a pathologist to confirm staining specificity. The optimal working concentration for LS-B2258 was determined to be 1:100. Western Blot: 1:1000; Incubate membrane with diluted antibody in 5% BSA, 1X TBS, 0.1% Tween-20 at 4uC with gentle shaking, overnight.
<b>Uses:</b>	IHC - Paraffin (1:100), Western blot (1:1000), ELISA (Optimal dilution to be determined by the researcher)
<b>Size:</b>	50 µl

**Immunohistochemistry Image:**



Anti-EEF2 antibody IHC of human small intestine. Immunohistochemistry of formalin-fixed, paraffin-embedded tissue after heat-induced antigen retrieval. Antibody LS-B2258 dilution 1:100.

**Requested From:**

Japan

Laboratory Reagent For In Vitro Research Use Only

Not for resale without prior written consent from LifeSpan BioSciences, Inc.

Created on 9/23/2014

© 2014 LifeSpan BioSciences