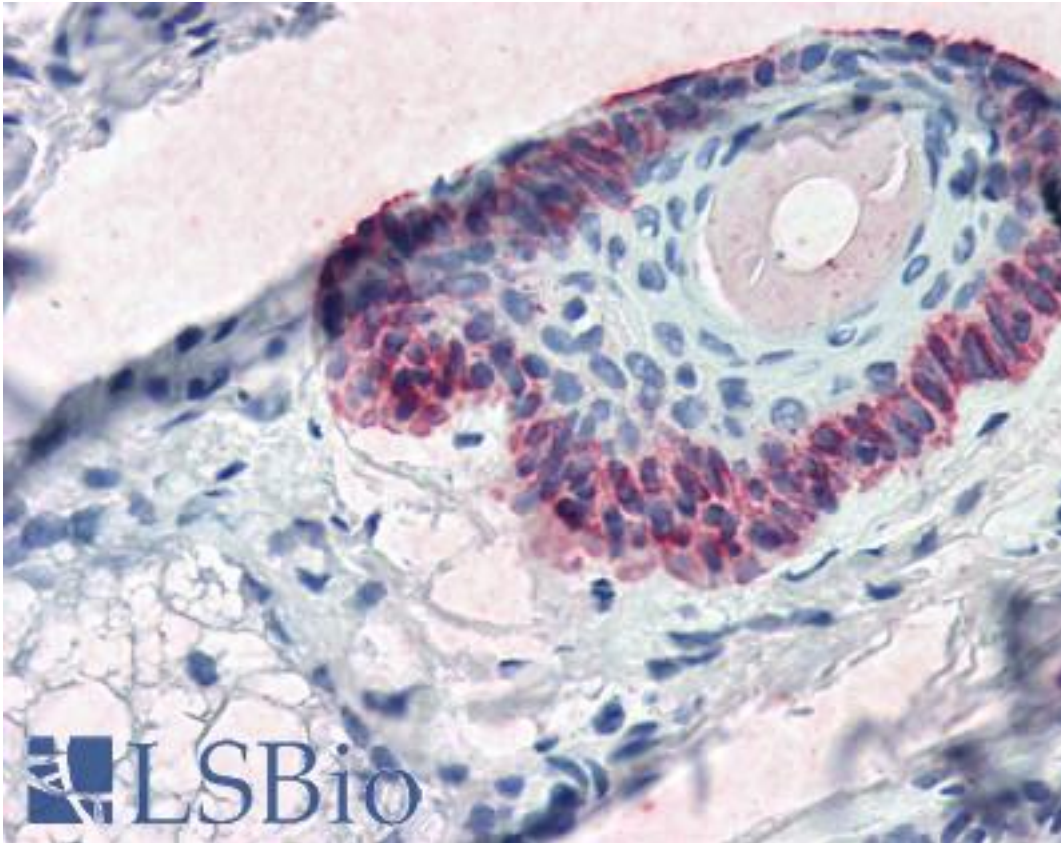


KRT15 / Cytokeratin 15 Mouse anti-Human Monoclonal (C-Terminus) (15K01) Antibody - LS-B2255 - LSBio	
<b>CatalogID:</b>	LS-B2255
<b>Validation:</b>	This antibody replaces catalog number LS-C24975. It has been validated for use in the following assays: IHC-P.
<b>Target:</b>	keratin 15 (KRT15)
<b>Synonyms:</b>	KRT15 Antibody, CK15 Antibody, Cytokeratin 15 Antibody, CK-15 Antibody, K1CO Antibody, Keratin 15 Antibody, K15 Antibody, Keratin-15, basic Antibody, KRTB Antibody, Cytokeratin-15 Antibody, Keratin-15 Antibody, Keratin-15, beta Antibody, Type I cytoskeletal 15 Antibody
<b>Family / Subfamily:</b>	Keratin / not assigned-Keratin
<b>Host</b>	KRT15 antibody was produced in Mouse
<b>Clonality:</b>	Monoclonal
<b>Isotype:</b>	IgG2a,k
<b>Clone Name:</b>	15K01
<b>Immunogen Species:</b>	KRT15 / Cytokeratin 15 antibody was raised against Human
<b>Antigen Type:</b>	Synthetic peptide
<b>Immunogen:</b>	KRT15 / Cytokeratin 15 antibody was raised against synthetic peptide corresponding to 17 residues from the C-terminal of human cytokeratin 15.
<b>Specificity:</b>	Recognizes human keratin 15.
<b>Epitope:</b>	C-Terminus
<b>Reactivity:</b>	Human, Mouse, Rat, Bovine
<b>Purification:</b>	Protein A purified
<b>Presentation:</b>	PBS, pH 7.4, 0.2% BSA, 15 mM sodium azide, before the addition of glycerol to 40%
<b>Recommended Storage:</b>	Short term +4°C (no longer than one week); Long term -20°C; Aliquot to avoid freeze/thaw cycles.
<b>Usage Summary:</b>	Immunohistochemistry: LS-B2255 was validated for use in immunohistochemistry on a panel of 21 formalin-fixed, paraffin-embedded (FFPE) human tissues after heat induced antigen retrieval in pH 6.0 citrate buffer. After incubation with the primary antibody, slides were incubated with biotinylated secondary antibody, followed by alkaline phosphatase-streptavidin and chromogen. The stained slides were evaluated by a pathologist to confirm staining specificity. The optimal working concentration for LS-B2255 was determined to be 5 ug/ml.
<b>Uses:</b>	IHC - Paraffin (5 µg/ml), Immunofluorescence (Optimal dilution to be determined by the researcher)
<b>Size:</b>	50 µl

**Immunohistochemistry Image:**



Anti-KRT15 / Cytokeratin 15 antibody IHC of human skin, hair follicle. Immunohistochemistry of formalin-fixed, paraffin-embedded tissue after heat-induced antigen retrieval. Antibody LS-B2255 concentration 5 ug/ml.

**Requested From:**

Japan

Laboratory Reagent For In Vitro Research Use Only

Not for resale without prior written consent from LifeSpan BioSciences, Inc.

Created on 9/23/2014

© 2014 LifeSpan BioSciences