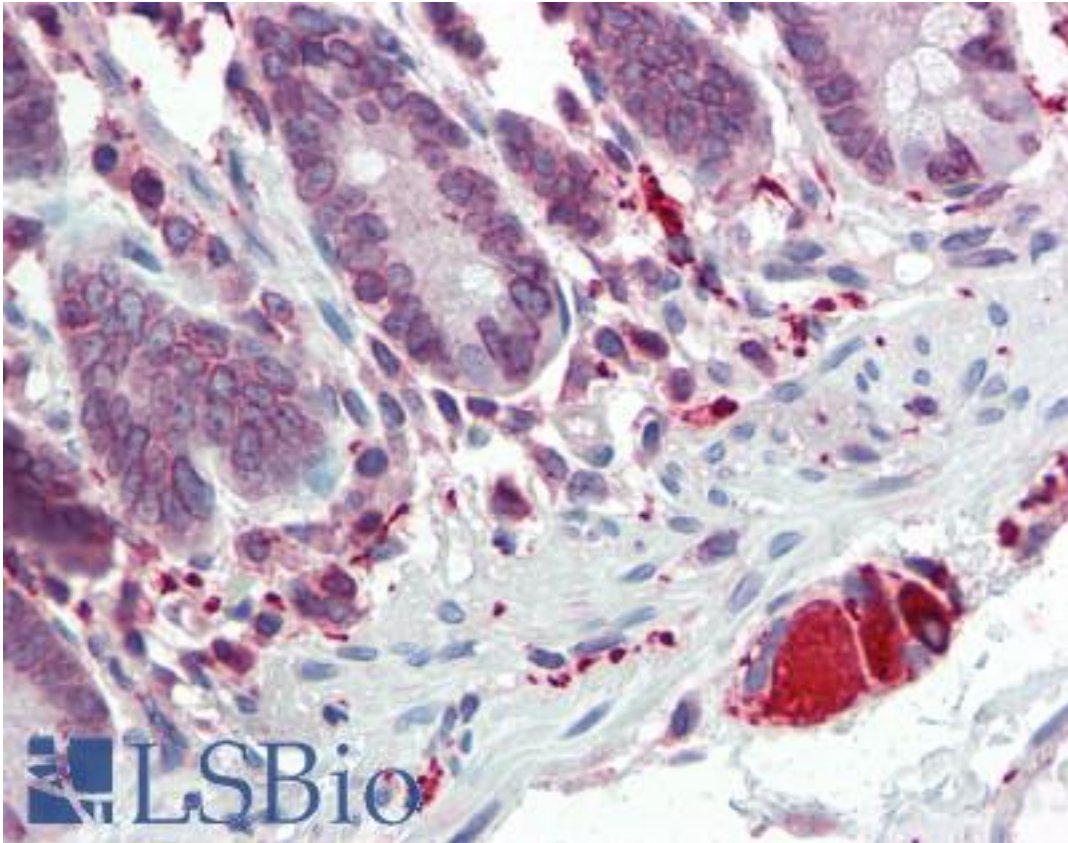


TLR7 Rabbit anti-Human Polyclonal (aa706-728) Antibody - LS-B2252 - LSBio

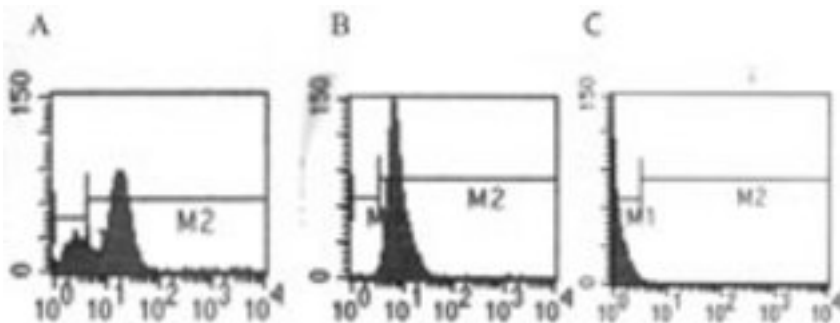
CatalogID:	LS-B2252
Validation:	This antibody replaces catalog number LS-C823. It has been validated for use in the following assays: IHC-P.
Target:	toll-like receptor 7 (TLR7)
Synonyms:	TLR7 Antibody, Toll-like receptor 7 Antibody
Family / Subfamily:	Toll-like Receptor / not assigned-Toll-like Receptor
Host	TLR7 antibody was produced in Rabbit
Clonality:	Polyclonal
Isotype:	IgG
Immunogen Species:	TLR7 antibody was raised against Human
Antigen Type:	Synthetic peptide
Immunogen:	TLR7 antibody was raised against synthetic peptide from human TLR7.
Specificity:	KLH-conjugated synthetic peptide corresponding to amino acids 706-728 of human TLR7. It will cross-react with mouse TLR7. In human Ramos cells, additional bands are seen.
Epitope:	aa706-728
Reactivity:	Human, Mouse
Purification:	Protein G purified
Presentation:	PBS, 0.05% BSA, 0.05% sodium azide
Recommended Storage:	+4°C or -20°C, Avoid repeated freezing and thawing.
Usage Summary:	Immunohistochemistry: LS-B2252 was validated for use in immunohistochemistry on a panel of 21 formalin-fixed, paraffin-embedded (FFPE) human tissues after heat induced antigen retrieval in pH 6.0 citrate buffer. After incubation with the primary antibody, slides were incubated with biotinylated secondary antibody, followed by alkaline phosphatase-streptavidin and chromogen. The stained slides were evaluated by a pathologist to confirm staining specificity. The optimal working concentration for LS-B2252 was determined to be 5 ug/ml.
Uses:	IHC - Paraffin (5 µg/ml), IHC - Frozen, Western blot (1 - 3 µg/ml), Flow Cytometry (Optimal dilution to be determined by the researcher)
Size:	50 µg
Concentration:	0.5 mg/ml

Immunohistochemistry Image:



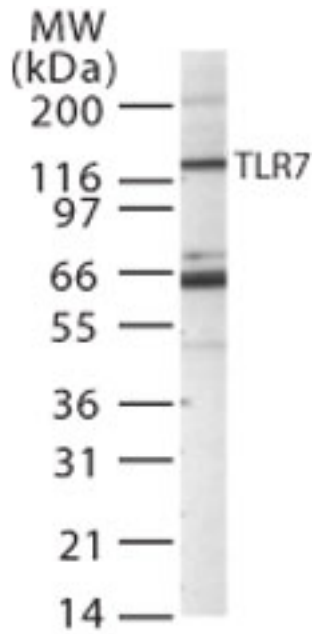
Anti-TLR7 antibody IHC of human small intestine. Immunohistochemistry of formalin-fixed, paraffin-embedded tissue after heat-induced antigen retrieval. Antibody LS-B2252 concentration 5 ug/ml.

Flow Cytometry Image:



Intracellular staining by FACS analysis of TLR7 in Ramos cells (A) and Raw cells (B) using antibody at 2 ug/ml. Histogram C shows the rabbit IgG isotype control .

Western Blot Image:



Western blot of TLR7 in Raw cell lysate using antibody at 1 ug/ml.

Requested From:

Japan

Laboratory Reagent For In Vitro Research Use Only

Not for resale without prior written consent from LifeSpan BioSciences, Inc.

Created on 9/23/2014

© 2014 LifeSpan BioSciences