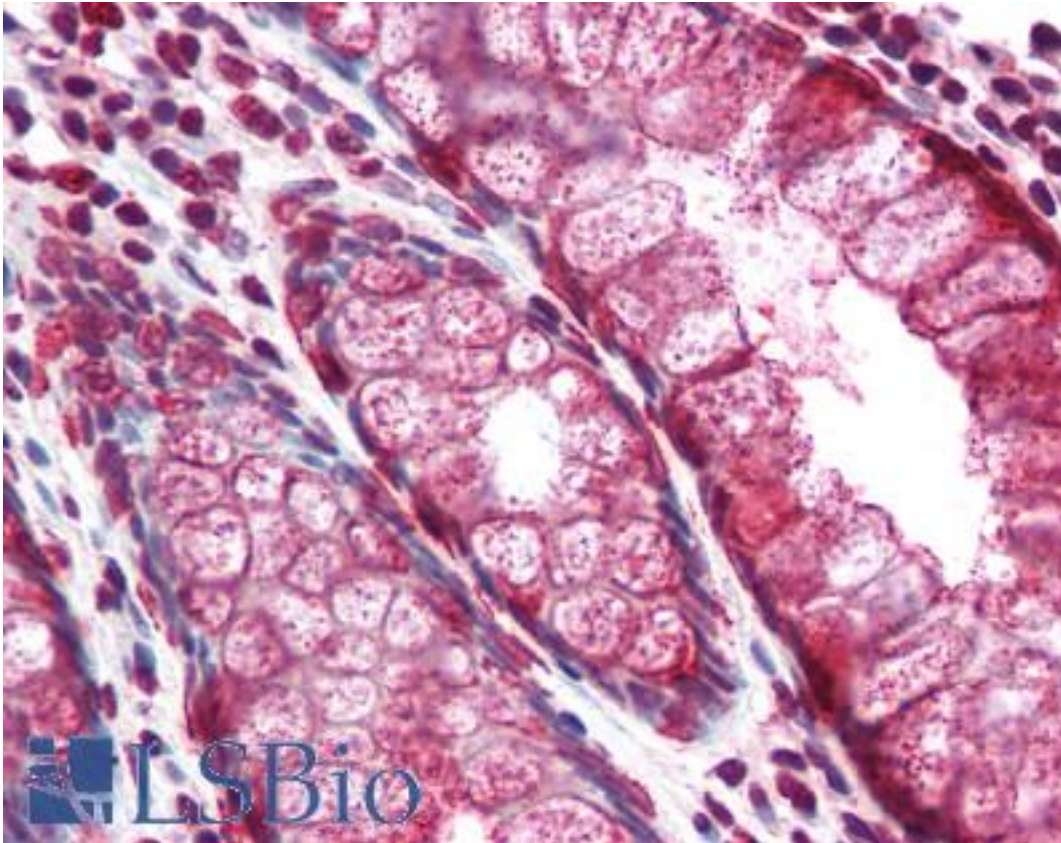


Mucin 2 / MUC2 Mouse anti-Human Monoclonal (996/1) Antibody - LS-B2250 - LSBio	
CatalogID:	LS-B2250
Validation:	This antibody replaces catalog number LS-C11571. It has been validated for use in the following assays: IHC-P.
Target:	mucin 2, oligomeric mucus/gel-forming (MUC2)
Synonyms:	MUC2 Antibody, Intestinal mucin-2 Antibody, Mucin-like protein Antibody, MUC-2 Antibody, Mucin 2, intestinal/tracheal Antibody, Mucin 2 Antibody, Mucin-2 Antibody, MLP Antibody, SMUC Antibody
Family / Subfamily:	Mucin / not assigned-Mucin
Host	MUC2 antibody was produced in Mouse
Clonality:	Monoclonal
Isotype:	IgG1
Clone Name:	996/1
Immunogen Species:	Mucin 2 / MUC2 antibody was raised against Human
Antigen Type:	Synthetic peptide
Immunogen:	Mucin 2 / MUC2 antibody was raised against mUC2 tandem repeat peptide.
Specificity:	Recognizes the human MUC2 mucin, and shows no cross-reactivity with MUC1, MUC3 or MUC4 mucins. In tissue Recognizes colon, liver and prostate tissues strongly. Recognizes malignant colonic mucosa as well as normal mucosa.
Reactivity:	Human
Purification:	Protein G purified
Presentation:	PBS, pH 7.4, 0.09% sodium azide.
Recommended Storage:	+4°C or -20°C, Avoid repeated freezing and thawing. Store undiluted.
Usage Summary:	Immunohistochemistry: LS-B2250 was validated for use in immunohistochemistry on a panel of 21 formalin-fixed, paraffin-embedded (FFPE) human tissues after heat induced antigen retrieval in pH 6.0 citrate buffer. After incubation with the primary antibody, slides were incubated with biotinylated secondary antibody, followed by alkaline phosphatase-streptavidin and chromogen. The stained slides were evaluated by a pathologist to confirm staining specificity. The optimal working concentration for LS-B2250 was determined to be 5 ug/ml. Histology Positive Control Tissue: Normal colon.
Uses:	IHC - Paraffin (5 µg/ml), IHC - Frozen, Western blot (Optimal dilution to be determined by the researcher)
Size:	50 µg
Concentration:	1 mg/ml

Immunohistochemistry Image:



Anti-MUC2 antibody IHC of human colon. Immunohistochemistry of formalin-fixed, paraffin-embedded tissue after heat-induced antigen retrieval. Antibody LS-B2250 concentration 5 ug/ml.

Requested From:

Japan

Laboratory Reagent For In Vitro Research Use Only

Not for resale without prior written consent from LifeSpan BioSciences, Inc.

Created on 9/23/2014

© 2014 LifeSpan BioSciences