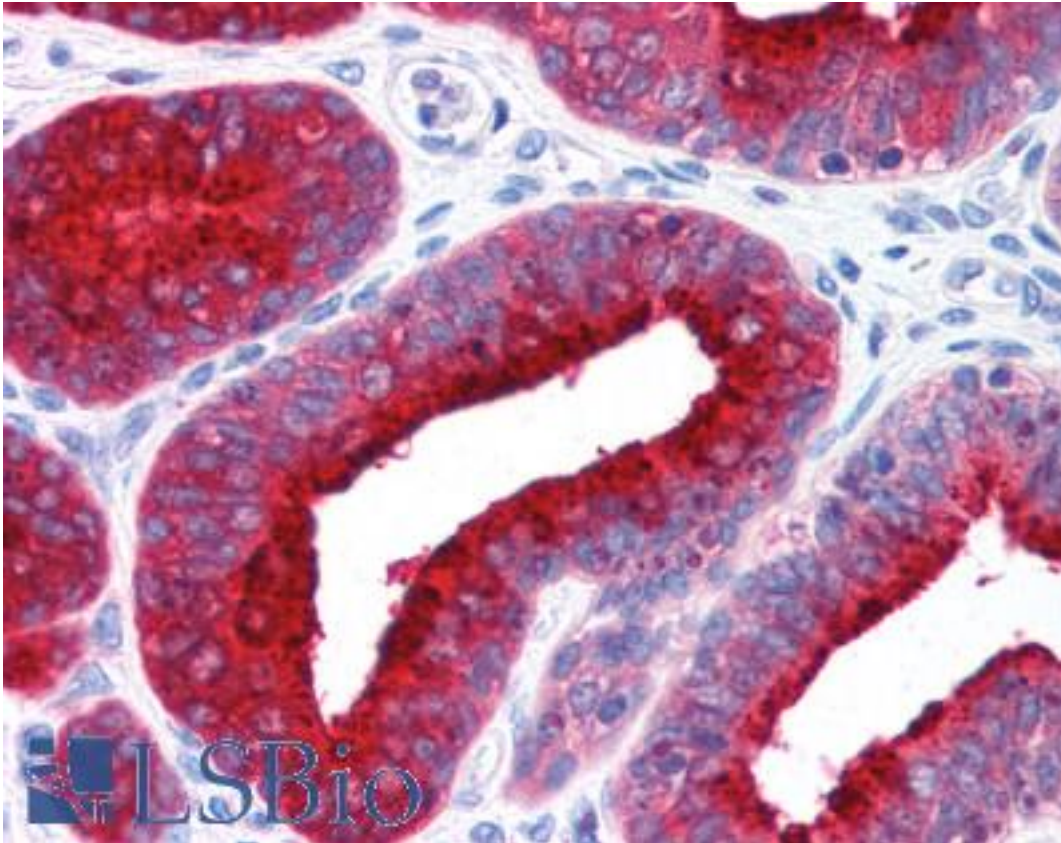


GRK2 Mouse anti-Human Monoclonal (5D5) Antibody - LS-B225 - LSBio	
CatalogID:	LS-B225
Validation:	This antibody replaces catalog number LS-C2770. It has been validated for use in the following assays: IHC.
Target:	adrenergic, beta, receptor kinase 1 (ADRBK1)
Synonyms:	ADRBK1 Antibody, BARK1 Antibody, Beta-ARK-1 Antibody, BETA-ARK1 Antibody, BARK Antibody, Betaark1 Antibody, GRK2 Antibody
Family / Subfamily:	Protein Kinase / GPRK
Host	ADRBK1 antibody was produced in Mouse
Clonality:	Monoclonal
Isotype:	IgG1,k
Clone Name:	5D5
Immunogen Species:	GRK2 antibody was raised against Human
Immunogen:	GRK2 antibody was raised against purified recombinant human beta-ARK1
Specificity:	Beta-adrenergic receptor kinase 1 (5D5).
Reactivity:	Human, Rat, Bovine
Purification:	Tissue culture supernatant
Presentation:	Ascites.
Recommended Storage:	Long term: -20°C; Short term: +4°C. Avoid repeat freeze-thaw cycles.
Usage Summary:	Immunohistochemistry: LS-B225 was validated for use in immunohistochemistry on a panel of 21 formalin-fixed, paraffin-embedded (FFPE) human tissues after heat induced antigen retrieval in pH 6.0 citrate buffer. After incubation with the primary antibody, slides were incubated with biotinylated secondary antibody, followed by alkaline phosphatase-streptavidin and chromogen. The stained slides were evaluated by a pathologist to confirm staining specificity. The optimal working concentration for LS-B225 was determined to be 1:50-1:100.
Uses:	IHC - Paraffin (1:50 - 1:100), Western blot (1:100) (Optimal dilution to be determined by the researcher)
Size:	50 µl

Immunohistochemistry Image:



Anti-ADRBK1 / GRK2 antibody IHC of human prostate. Immunohistochemistry of formalin-fixed, paraffin-embedded tissue after heat-induced antigen retrieval. Antibody LS-B225 dilution 1:50.

Requested From:

Japan

Laboratory Reagent For In Vitro Research Use Only

Not for resale without prior written consent from LifeSpan BioSciences, Inc.

Created on 9/23/2014

© 2014 LifeSpan BioSciences