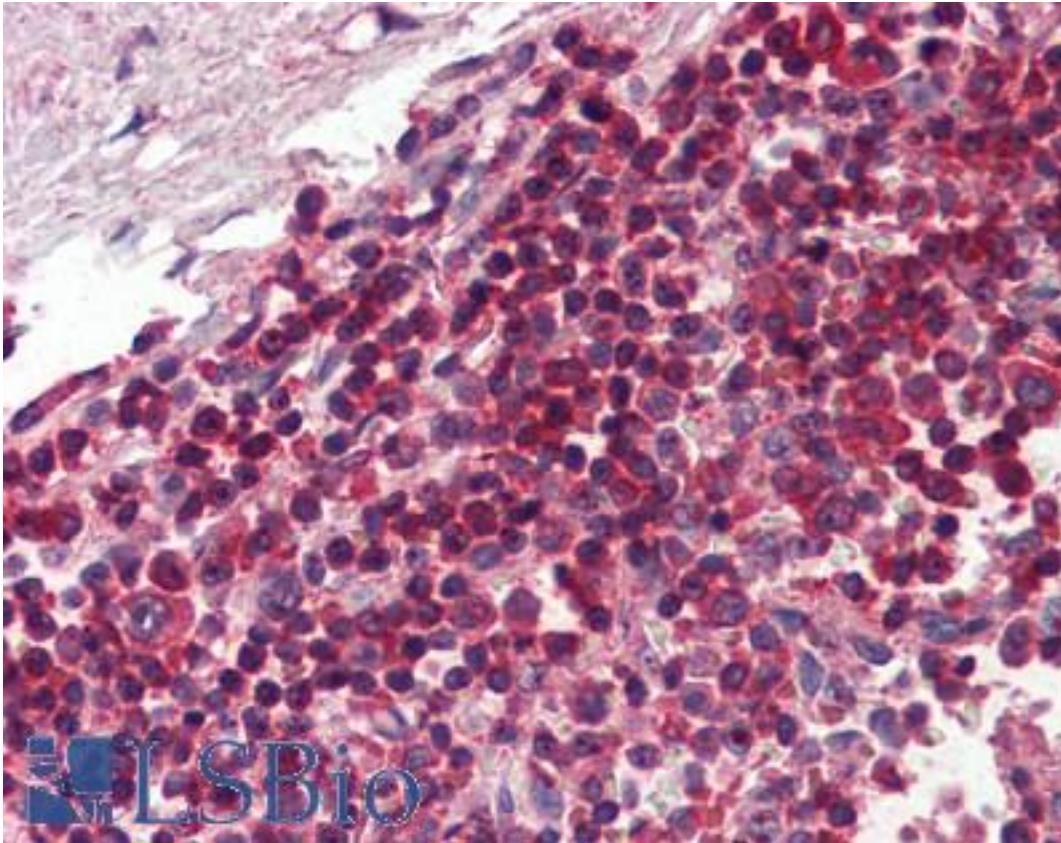


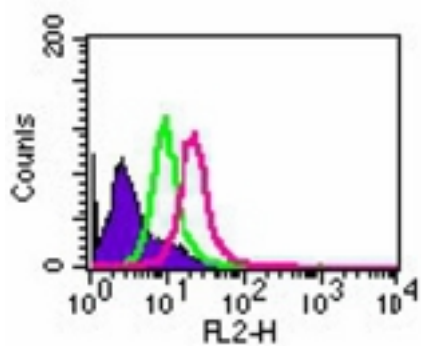
TLR8 Mouse anti-Human Monoclonal (aa750-850) (44C143) Antibody - LS-B2248 - LSBio	
CatalogID:	LS-B2248
Validation:	This antibody replaces catalog number LS-C549. It has been validated for use in the following assays: IHC-P.
Target:	toll-like receptor 8 (TLR8)
Synonyms:	TLR8 Antibody, CD288 Antibody, Toll-like receptor 8 Antibody, CD288 antigen Antibody
Family / Subfamily:	Toll-like Receptor / not assigned-Toll-like Receptor
Host	TLR8 antibody was produced in Mouse
Clonality:	Monoclonal
Isotype:	IgG,k
Clone Name:	44C143
Immunogen Species:	TLR8 antibody was raised against Human
Antigen Type:	Synthetic peptide
Immunogen:	TLR8 antibody was raised against synthetic peptide from human TLR8.
Specificity:	A KLH-conjugated synthetic peptide of human TLR8, within amino acids 750-850. It will cross-react with mouse TLR8.
Epitope:	aa750-850
Reactivity:	Human, Mouse
Purification:	Protein G purified
Presentation:	PBS, 0.05% BSA, 0.05% sodium azide. Sourced in TCS.
Recommended Storage:	Long term: -20°C; Short term: +4°C. Avoid repeat freeze-thaw cycles.
Usage Summary:	Immunohistochemistry: LS-B2248 was validated for use in immunohistochemistry on a panel of 21 formalin-fixed, paraffin-embedded (FFPE) human tissues after heat induced antigen retrieval in pH 6.0 citrate buffer. After incubation with the primary antibody, slides were incubated with biotinylated secondary antibody, followed by alkaline phosphatase-streptavidin and chromogen. The stained slides were evaluated by a pathologist to confirm staining specificity. The optimal working concentration for LS-B2248 was determined to be 5 ug/ml.
Uses:	IHC - Paraffin (5 µg/ml), Western blot (1 - 3 µg/ml), Flow Cytometry (Optimal dilution to be determined by the researcher)
Size:	50 µg
Concentration:	0.5 mg/ml

Immunohistochemistry Image:



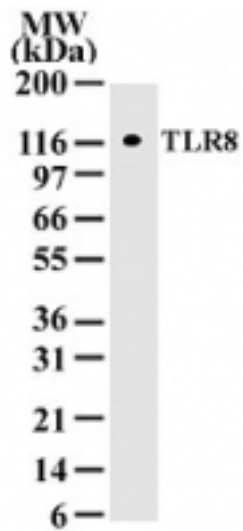
Anti-TLR8 antibody IHC of human spleen. Immunohistochemistry of formalin-fixed, paraffin-embedded tissue after heat-induced antigen retrieval. Antibody LS-B2248 concentration 5 ug/ml.

Flow Cytometry Image:



Intracellular flow analysis of TLR8 in 1×10^6 Ramos cells using 0.5 ug of antibody. Shaded histogram represents Ramos cells without antibody; green represents isotype control; purple represents anti-TLR8 antibody.

Western Blot Image:



Western blot of TLR8 in cell lysates from 293 transfected with human TLR8 using antibody at a concentration of 2 ug/ml.

Requested From:

Japan

Laboratory Reagent For In Vitro Research Use Only

Not for resale without prior written consent from LifeSpan BioSciences, Inc.

Created on 9/23/2014

© 2014 LifeSpan BioSciences