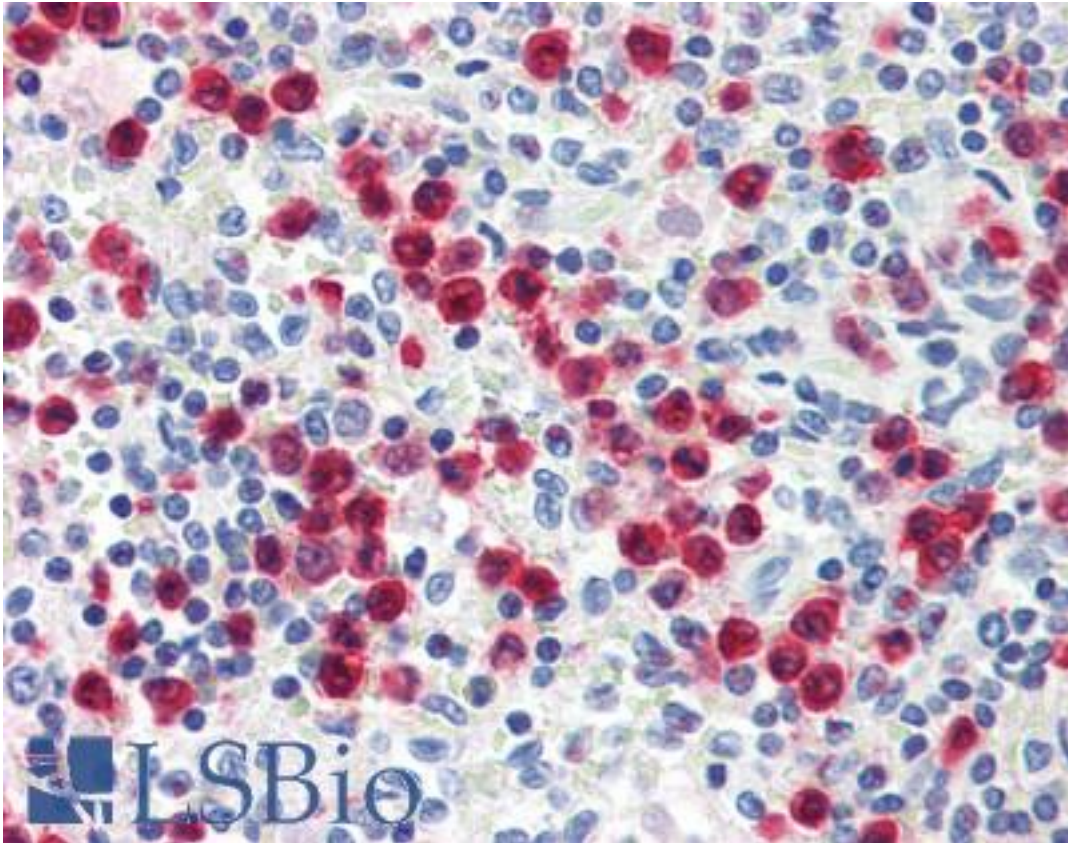


S100A8 / MRP8 Mouse anti-Human Monoclonal (FITC) Antibody - LS-B2247 - LSBio

CatalogID:	LS-B2247
Validation:	This antibody replaces catalog number LS-C25355. It has been validated for use in the following assays: IHC-P.
Target:	S100 calcium binding protein A8 (S100A8)
Synonyms:	S100A8 Antibody, 60B8AG Antibody, CFAG Antibody, CAGA Antibody, Calgranulin A Antibody, Calgranulin-A Antibody, Calprotectin L1L subunit Antibody, Cystic fibrosis antigen Antibody, CGLA Antibody, L1Ag Antibody, NIF Antibody, p8 Antibody, Protein S100-A8 Antibody, MRP8 Antibody, Urinary stone protein band A Antibody, CP-10 Antibody, MA387 Antibody, MRP-8 Antibody
Host	S100A8 antibody was produced in Mouse
Clonality:	Monoclonal
Isotype:	IgG1
Conjugations:	Fluorescein (FITC)
Immunogen Species:	S100A8 / MRP8 antibody was raised against Human
Antigen Type:	Cells
Immunogen:	S100A8 / MRP8 antibody was raised against human monocytes.
Specificity:	Recognizes human L1 Protein or Calprotectin Molecule. Variable results have been reported for the staining of brain macrophages and microglia. Species cross-reactivity: equine, Cynomolgus monkey, Rhesus monkey, monkey, bovine, baboon, rabbit, canine, feline, porcine, guinea pig and rat.
Reactivity:	Human, Monkey, Rat, Bovine, Cat, Dog, Horse, Pig, Rabbit
Purification:	Protein G purified
Presentation:	1% BSA, 0.09% sodium azide.
Recommended Storage:	Long term: -20°C; Short term: +4°C. Avoid repeat freeze-thaw cycles.
Usage Summary:	Immunohistochemistry: LS-B2247 was validated for use in immunohistochemistry on a panel of 21 formalin-fixed, paraffin-embedded (FFPE) human tissues after heat induced antigen retrieval in pH 6.0 citrate buffer. After incubation with the primary antibody, slides were incubated with biotinylated secondary antibody, followed by alkaline phosphatase-streptavidin and chromogen. The stained slides were evaluated by a pathologist to confirm staining specificity. The optimal working concentration for LS-B2247 was determined to be 1:50. Flow Cytometry: Neat. Use 10 ul of the suggested working dilution to label 10 ⁶ cells in 100ul. Membrane permeabilization is required.
Uses:	IHC - Paraffin (1:50), Flow Cytometry (Optimal dilution to be determined by the researcher)
Size:	50 µg
Concentration:	0.1 mg/ml

Immunohistochemistry Image:



Anti-S100A8 antibody IHC of human spleen, granulocytes. Immunohistochemistry of formalin-fixed, paraffin-embedded tissue after heat-induced antigen retrieval. Antibody LS-B2247 dilution 1:50.

Requested From:

Japan

Laboratory Reagent For In Vitro Research Use Only

Not for resale without prior written consent from LifeSpan BioSciences, Inc.

Created on 9/23/2014

© 2014 LifeSpan BioSciences