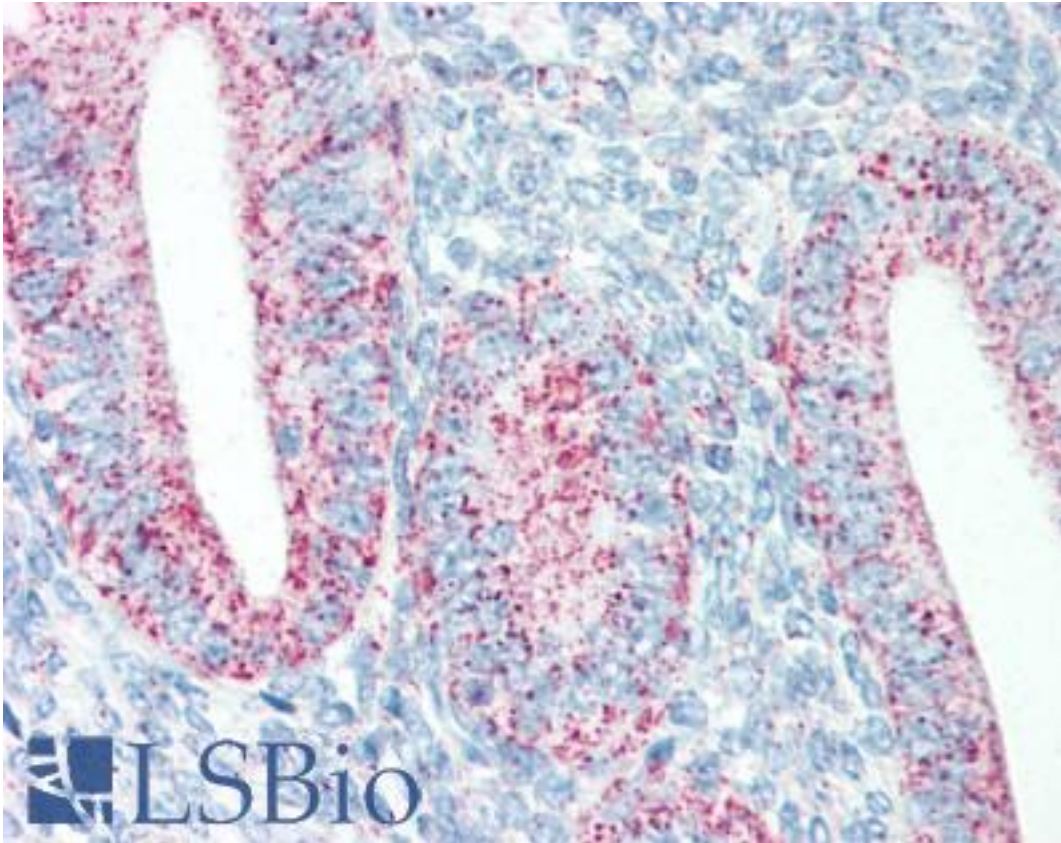


HSPD1 / HSP60 Mouse anti-Human Monoclonal Antibody - LS-B2243 - LSBio	
CatalogID:	LS-B2243
Validation:	This antibody replaces catalog number LS-C15695. It has been validated for use in the following assays: IHC-P.
Target:	heat shock 60kDa protein 1 (chaperonin) (HSPD1)
Synonyms:	HSPD1 Antibody, 60 kDa chaperonin Antibody, CPN60 Antibody, Heat shock protein 65 Antibody, Heat shock protein 60 Antibody, HSP-60 Antibody, HSP60 Antibody, HuCHA60 Antibody, HLD4 Antibody, HSP65 Antibody, p60 lymphocyte protein Antibody, SPG13 Antibody, Chaperonin 60 Antibody, GROEL Antibody
Host	HSPD1 antibody was produced in Mouse
Clonality:	Monoclonal
Isotype:	IgG2b
Immunogen Species:	HSPD1 / HSP60 antibody was raised against Human
Antigen Type:	Recombinant protein
Immunogen:	HSPD1 / HSP60 antibody was raised against recombinant human HSP60.
Specificity:	Cross-reactivity with HSP60 from mouse, rat, canine, feline, goat, rabbit, duck, porcine, human and bovine.
Reactivity:	Human, Mouse, Rat, Bovine, Cat, Dog, Goat, Pig, Rabbit
Purification:	Protein A purified
Presentation:	PBS, pH 7.4, 0.1% sodium azide, before the addition of glycerol to 40%
Recommended Storage:	+4°C or -20°C, Avoid repeated freezing and thawing.
Usage Summary:	Immunohistochemistry: LS-B2243 was validated for use in immunohistochemistry on a panel of 21 formalin-fixed, paraffin-embedded (FFPE) human tissues after heat induced antigen retrieval in pH 6.0 citrate buffer. After incubation with the primary antibody, slides were incubated with biotinylated secondary antibody, followed by alkaline phosphatase-streptavidin and chromogen. The stained slides were evaluated by a pathologist to confirm staining specificity. The optimal working concentration for LS-B2243 was determined to be 5 ug/ml.
Uses:	IHC - Paraffin (5 µg/ml), Immunofluorescence, Western blot, ELISA (Optimal dilution to be determined by the researcher)
Size:	50 µg
Concentration:	0.25 mg/ml

Immunohistochemistry Image:



Anti-HSPD1 antibody IHC staining of human uterus. Immunohistochemistry of formalin-fixed, paraffin-embedded tissue after heat-induced antigen retrieval. Antibody LS-B2243 concentration 5 ug/ml.

Requested From:

Japan

Laboratory Reagent For In Vitro Research Use Only

Not for resale without prior written consent from LifeSpan BioSciences, Inc.

Created on 9/23/2014

© 2014 LifeSpan BioSciences