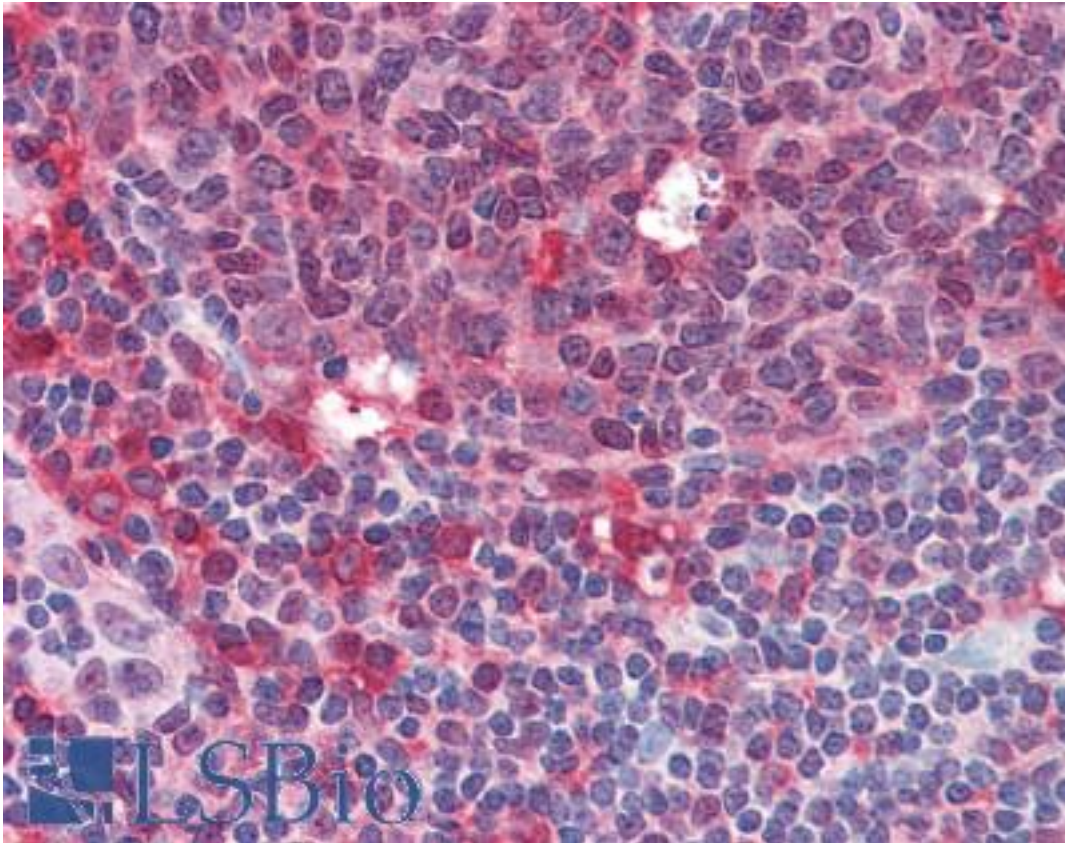


SYK Mouse anti-Human Monoclonal (aa5-360) Antibody - LS-B2240 - LSBio	
<b>CatalogID:</b>	LS-B2240
<b>Validation:</b>	This antibody replaces catalog number LS-C10478. It has been validated for use in the following assays: IHC-P.
<b>Target:</b>	spleen tyrosine kinase (SYK)
<b>Synonyms:</b>	SYK Antibody, p72syk Antibody, Spleen tyrosine kinase Antibody, Syk protein-tyrosine kinase Antibody, Tyrosine-protein kinase SYK Antibody, p72-Syk Antibody
<b>Family / Subfamily:</b>	Protein Kinase / Syk/ZAP70
<b>Host</b>	SYK antibody was produced in Mouse
<b>Clonality:</b>	Monoclonal
<b>Isotype:</b>	IgG1
<b>Immunogen Species:</b>	SYK antibody was raised against Human
<b>Antigen Type:</b>	Recombinant protein
<b>Immunogen:</b>	SYK antibody was raised against recombinant fragment (aa 5-360) of human Syk.
<b>Specificity:</b>	Recognizes human Syk.
<b>Epitope:</b>	aa5-360
<b>Reactivity:</b>	Human, Mouse, Rat
<b>Purification:</b>	Protein A purified
<b>Presentation:</b>	PBS, pH 7.4, 15 mM sodium azide.
<b>Recommended Storage:</b>	Short term +4°C (no longer than one week); Long term -20°C; Aliquot to avoid freeze/thaw cycles.
<b>Usage Summary:</b>	Immunohistochemistry: LS-B2240 was validated for use in immunohistochemistry on a panel of 21 formalin-fixed, paraffin-embedded (FFPE) human tissues after heat induced antigen retrieval in pH 6.0 citrate buffer. After incubation with the primary antibody, slides were incubated with biotinylated secondary antibody, followed by alkaline phosphatase-streptavidin and chromogen. The stained slides were evaluated by a pathologist to confirm staining specificity. The optimal working concentration for LS-B2240 was determined to be 10 ug/ml.
<b>Uses:</b>	IHC - Paraffin (10 µg/ml), ICC, Western blot, Immunoprecipitation (Optimal dilution to be determined by the researcher)
<b>Size:</b>	50 µg
<b>Concentration:</b>	1 mg/ml

**Immunohistochemistry Image:**



Anti-SYK antibody IHC of human tonsil. Immunohistochemistry of formalin-fixed, paraffin-embedded tissue after heat-induced antigen retrieval. Antibody LS-B2240 concentration 10 ug/ml.

**Requested From:**

Japan

Laboratory Reagent For In Vitro Research Use Only

Not for resale without prior written consent from LifeSpan BioSciences, Inc.

Created on 9/23/2014

© 2014 LifeSpan BioSciences