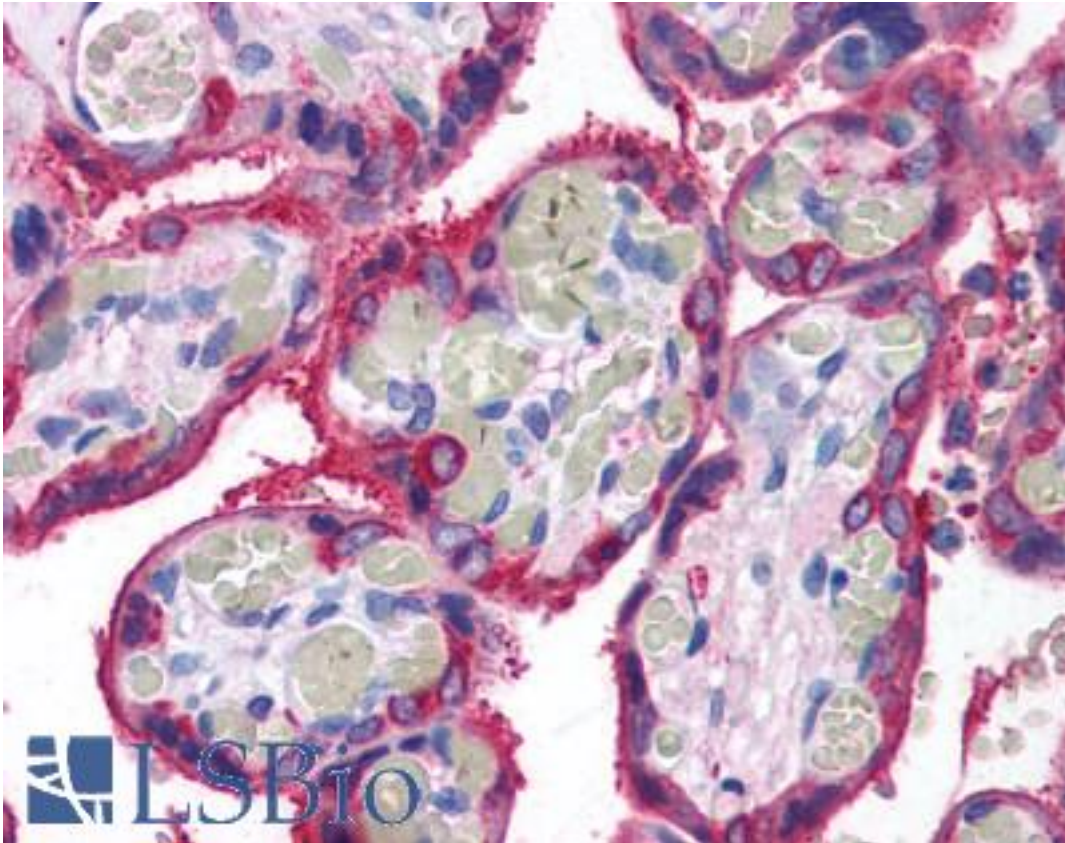


TGM2 / Transglutaminase 2 Rabbit anti-Human Polyclonal Antibody - LS-B2235 - LSBio

<b>CatalogID:</b>	LS-B2235
<b>Validation:</b>	This antibody replaces catalog number LS-C39835. It has been validated for use in the following assays: IHC-P.
<b>Target:</b>	transglutaminase 2 (TGM2)
<b>Synonyms:</b>	TGM2 Antibody, G-ALPHA-h Antibody, GNAH Antibody, TG(C) Antibody, Transglutaminase 2 Antibody, Transglutaminase C Antibody, TG2 Antibody, TGase H Antibody, TGase-2 Antibody, TGase-H Antibody, Transglutaminase H Antibody, TGase C Antibody, TGC Antibody, TTG Antibody, C polypeptide Antibody, Tgase II Antibody, Tissue transglutaminase Antibody, Transglutaminase-2 Antibody
<b>Host</b>	TGM2 antibody was produced in Rabbit
<b>Clonality:</b>	Polyclonal
<b>Isotype:</b>	IgG
<b>Immunogen Species:</b>	TGM2 / Transglutaminase 2 antibody was raised against Human
<b>Antigen Type:</b>	Recombinant protein
<b>Immunogen:</b>	TGM2 / Transglutaminase 2 antibody was raised against recombinant full length human TGase II (77-85kD). Cellular Localization: Cytoplasm, cell membrane, and extracellular matrix.
<b>Specificity:</b>	Recognizes human Transglutaminase II at ~77-85kD.
<b>Reactivity:</b>	Human, Mouse, Rat
<b>Purification:</b>	Protein A purified
<b>Presentation:</b>	PBS, pH 7.4, 0.2% BSA, 0.1% sodium azide.
<b>Recommended Storage:</b>	Short term +4°C (no longer than one week); Long term -20°C; Aliquot to avoid freeze/thaw cycles.
<b>Usage Summary:</b>	Immunohistochemistry: LS-B2235 was validated for use in immunohistochemistry on a panel of 21 formalin-fixed, paraffin-embedded (FFPE) human tissues after heat induced antigen retrieval in pH 6.0 citrate buffer. After incubation with the primary antibody, slides were incubated with biotinylated secondary antibody, followed by alkaline phosphatase-streptavidin and chromogen. The stained slides were evaluated by a pathologist to confirm staining specificity. The optimal working concentration for LS-B2235 was determined to be 5 ug/ml. Immunoprecipitation (Native verified): 10 ug/mg protein lysate. Use Protein A. Western Blot: 5-10 ug/ml for 2hrs at RT. Positive control: HUVEC cells. Breast carcinoma.
<b>Uses:</b>	IHC - Paraffin (5 µg/ml), Western blot (5 - 10 µg/ml), Immunoprecipitation (Optimal dilution to be determined by the researcher)
<b>Size:</b>	50 µl
<b>Concentration:</b>	1 mg/ml

**Immunohistochemistry Image:**



Anti-TGM2 / Transglutaminase 2 antibody IHC of human placenta. Immunohistochemistry of formalin-fixed, paraffin-embedded tissue after heat-induced antigen retrieval. Antibody LS-B2235 concentration 5 ug/ml.

**Requested From:**

Japan

Laboratory Reagent For In Vitro Research Use Only

Not for resale without prior written consent from LifeSpan BioSciences, Inc.

Created on 9/23/2014

© 2014 LifeSpan BioSciences