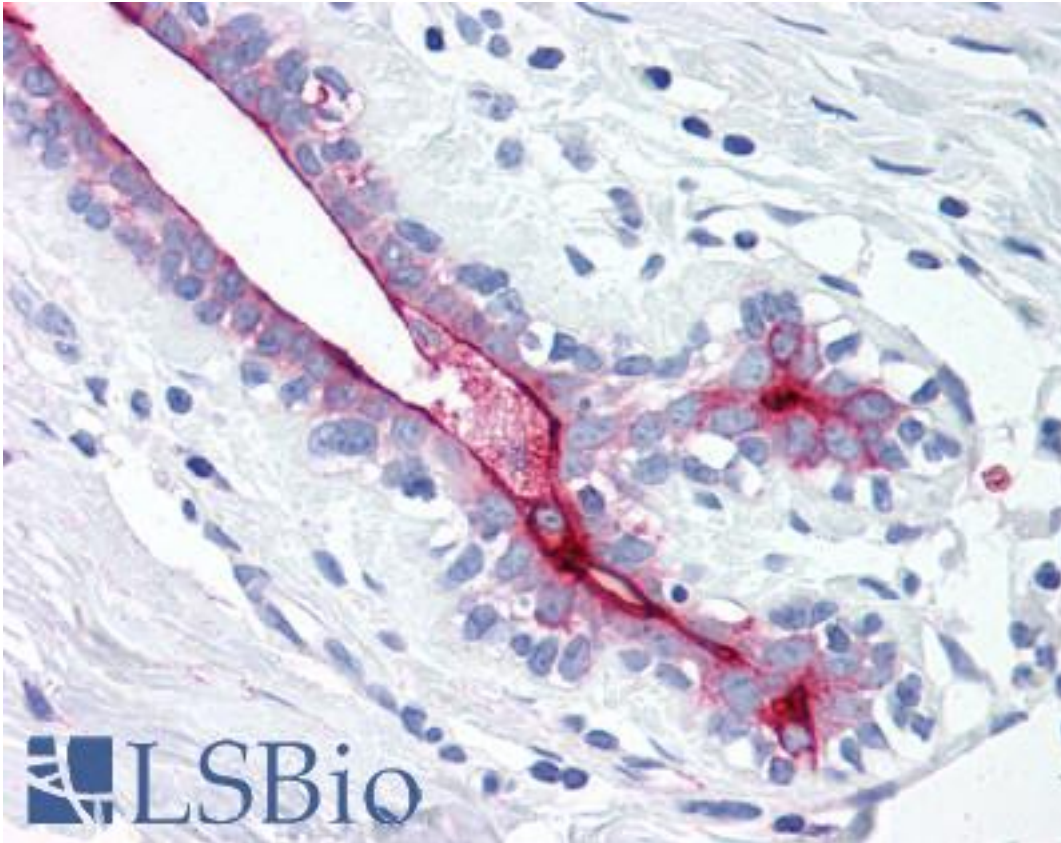


EMA / MUC1 Mouse anti-Human Monoclonal Antibody - LS-B2230 - LSBio	
CatalogID:	LS-B2230
Validation:	This antibody replaces catalog number LS-C23167. It has been validated for use in the following assays: IHC-P.
Target:	mucin 1, cell surface associated (MUC1)
Synonyms:	MUC1 Antibody, CA15-3 Antibody, CD227 Antibody, Carcinoma-associated mucin Antibody, CD227 antigen Antibody, DF3 antigen Antibody, Episialin Antibody, Epithelial membrane antigen Antibody, H23 antigen Antibody, H23AG Antibody, Krebs von den Lungen-6 Antibody, MAM6 Antibody, MUC1/ZD Antibody, MUC-1/SEC Antibody, Mucin-1 Antibody, Pem Antibody, KL-6 Antibody, MUC-1/X Antibody, Tumor-associated mucin Antibody, Peanut-reactive urinary mucin Antibody, Polymorphic epithelial mucin Antibody, PUM Antibody, EMA Antibody, MUC-1 Antibody, Mucin 1, transmembrane Antibody
Family / Subfamily:	Mucin / not assigned-Mucin
Host	MUC1 antibody was produced in Mouse
Clonality:	Monoclonal
Isotype:	IgG1
Immunogen Species:	EMA / MUC1 antibody was raised against Human
Immunogen:	EMA / MUC1 antibody was raised against human milk fat globule.
Specificity:	Recognizes human Episialin. Reacts with all glycoforms of Episialin.
Reactivity:	Human
Purification:	Purified
Presentation:	PBS, 0.1% BSA, 0.02% sodium azide
Recommended Storage:	Long term: -20°C; Short term: +4°C. Avoid repeat freeze-thaw cycles.
Usage Summary:	Immunohistochemistry: LS-B2230 was validated for use in immunohistochemistry on a panel of 21 formalin-fixed, paraffin-embedded (FFPE) human tissues after heat induced antigen retrieval in pH 6.0 citrate buffer. After incubation with the primary antibody, slides were incubated with biotinylated secondary antibody, followed by alkaline phosphatase-streptavidin and chromogen. The stained slides were evaluated by a pathologist to confirm staining specificity. The optimal working concentration for LS-B2230 was determined to be 5 ug/ml.
Uses:	IHC - Paraffin (5 µg/ml), ICC, Western blot (1:100 - 1:1000), Flow Cytometry (Optimal dilution to be determined by the researcher)
Size:	50 µl
Concentration:	1 mg/ml

Immunohistochemistry Image:



Anti-MUC1 antibody IHC of human breast. Immunohistochemistry of formalin-fixed, paraffin-embedded tissue after heat-induced antigen retrieval. Antibody LS-B2230 concentration 5 ug/ml.

Requested From:

Japan

Laboratory Reagent For In Vitro Research Use Only

Not for resale without prior written consent from LifeSpan BioSciences, Inc.

Created on 9/23/2014

© 2014 LifeSpan BioSciences