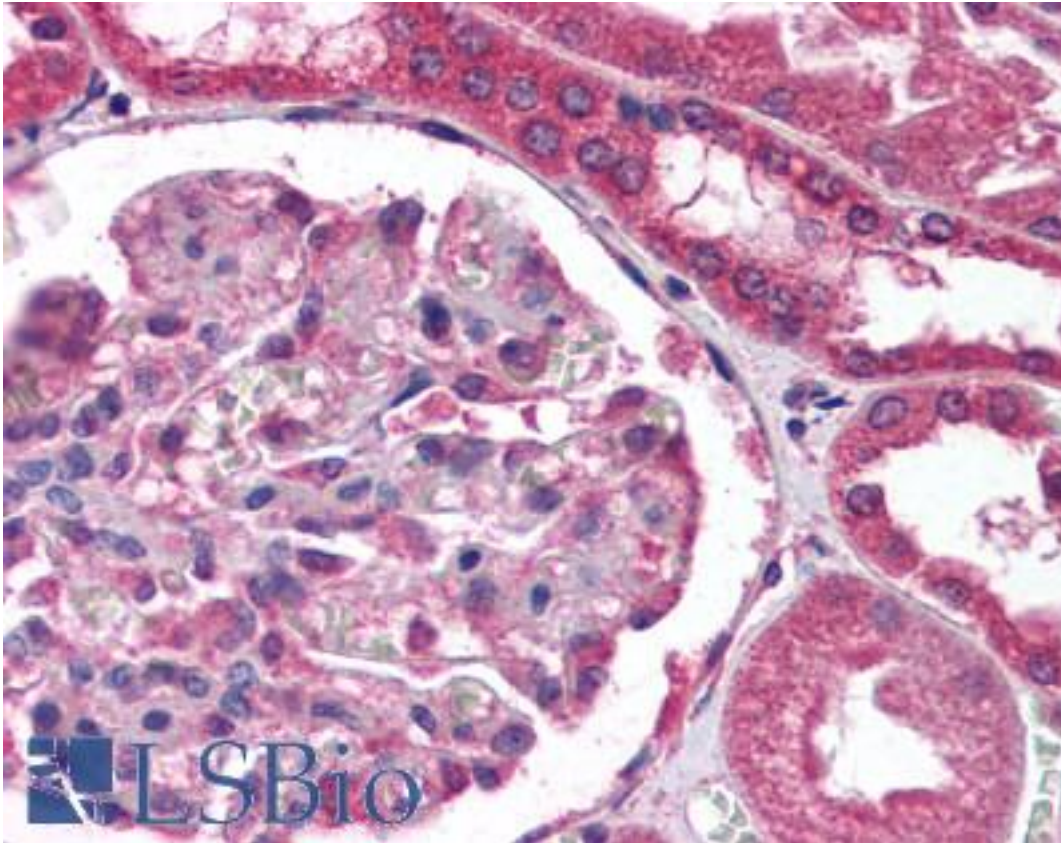


COL18A1 / Endostatin Mouse anti-Mouse Monoclonal Antibody - LS-B2229 - LSBio

CatalogID:	LS-B2229
Validation:	This antibody replaces catalog number LS-C23045. It has been validated for use in the following assays: IHC-P.
Target:	collagen, type XVIII, alpha 1 (COL18A1)
Synonyms:	COL18A1 Antibody, Collagen, type XVIII, alpha 1 Antibody, Collagen alpha-1(XVIII) chain Antibody, Endostatin Antibody, KNO Antibody, KNO1 Antibody, KS Antibody, Multi-functional protein MFP Antibody, Antiangiogenic agent Antibody, Collagen alpha 1(xviii) Antibody, Knobloch syndrome, type 1 Antibody
Family / Subfamily:	Collagen / not assigned-Collagen
Host	COL18A1 antibody was produced in Mouse
Clonality:	Monoclonal
Isotype:	IgG
Immunogen Species:	COL18A1 / Endostatin antibody was raised against Mouse
Immunogen:	COL18A1 / Endostatin antibody was raised against full-length recombinant murine endostatin.
Specificity:	Recognizes mouse endostatin, Mr 22kD, an unidentified protein is also weakly detected, Mr 54kD. Detects human protein in IHC-FFPE. It is predicted that the antibody will also detect the rat protein. Cross-reactivity is predicted based on sequence homology. The antibody has not been specifically tested with rat samples at this time.
Reactivity:	Mouse, Human, Rat
Purification:	Thiophilic adsorption
Presentation:	50 mM sodium phosphate, pH 8.0, 0.05% sodium azide, before the addition of glycerol to 30%. Sourced in Ascites.
Recommended Storage:	Long term: -20°C; Short term: +4°C. Avoid repeat freeze-thaw cycles.
Usage Summary:	Immunohistochemistry: LS-B2229 was validated for use in immunohistochemistry on a panel of 21 formalin-fixed, paraffin-embedded (FFPE) human tissues after heat induced antigen retrieval in pH 6.0 citrate buffer. After incubation with the primary antibody, slides were incubated with biotinylated secondary antibody, followed by alkaline phosphatase-streptavidin and chromogen. The stained slides were evaluated by a pathologist to confirm staining specificity. The optimal working concentration for LS-B2229 was determined to be 1:100. Western Blot: 1:500-1:2000. Detects endostatin in mouse liver cell lysates to which 50ng of recombinant human endostatin was added. Mouse liver cell lysate was resolved by electrophoresis, transferred to nitrocellulose and probed with LS-B2229. Proteins were visualized using an IgG (HRP) goat anti-mouse and a chemiluminescence detection system.
Uses:	IHC - Paraffin (1:100), Western blot (Optimal dilution to be determined by the researcher)
Size:	50 µl

Immunohistochemistry Image:



Anti-COL18A1 / Endostatin antibody IHC of human kidney. Immunohistochemistry of formalin-fixed, paraffin-embedded tissue after heat-induced antigen retrieval. Antibody LS-B2229 dilution 1:100.

Requested From:

Japan

Laboratory Reagent For In Vitro Research Use Only

Not for resale without prior written consent from LifeSpan BioSciences, Inc.

Created on 9/23/2014

© 2014 LifeSpan BioSciences