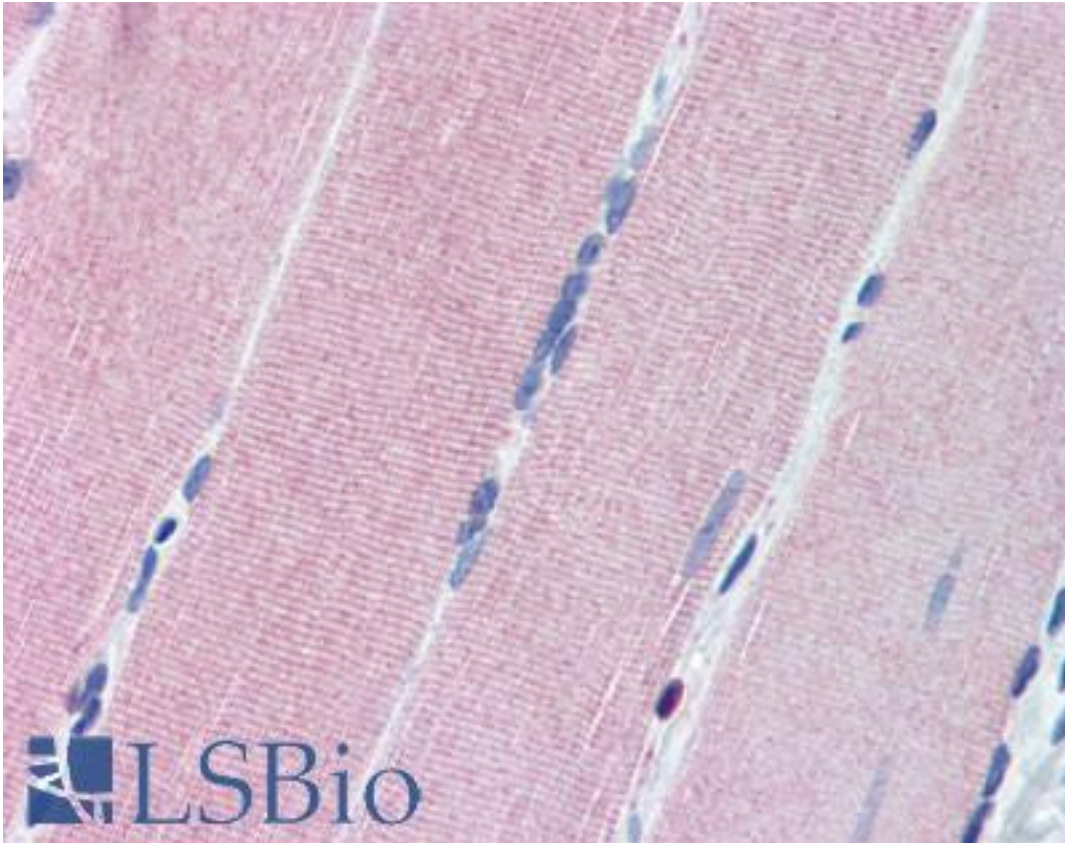


PKG / PRKG1 Rabbit anti-Human Polyclonal (aa657-671) Antibody - LS-B2219 - LSBio	
<b>CatalogID:</b>	LS-B2219
<b>Validation:</b>	This antibody replaces catalog number LS-C38517. It has been validated for use in the following assays: IHC-P.
<b>Target:</b>	protein kinase, cGMP-dependent, type I (PRKG1)
<b>Synonyms:</b>	PRKG1 Antibody, CGKI Antibody, CGMP kinase I Antibody, CGMP protein kinase type I Antibody, CGK-I Antibody, CGK1 Antibody, PKGI Antibody, PKG I Antibody, PRKGR1B Antibody, PRKG1B Antibody, PRKGR1A Antibody, PGK Antibody, PKG Antibody, CGK Antibody, CGK 1 Antibody, CGKI-alpha Antibody, CGKI-BETA Antibody
<b>Family / Subfamily:</b>	Protein Kinase / CGMP
<b>Host</b>	PRKG1 antibody was produced in Rabbit
<b>Clonality:</b>	Polyclonal
<b>Isotype:</b>	IgG
<b>Immunogen Species:</b>	PKG / PRKG1 antibody was raised against Human
<b>Antigen Type:</b>	Synthetic peptide - KLH conjugated
<b>Immunogen:</b>	PKG / PRKG1 antibody was raised against a 15 residue synthetic peptide DEPPDDNSGWDIDF based on the human PKG 1alpha (residues 657-671) and the peptide coupled to KLH. Percent identity by BLAST analysis: Human, Gibbon, Monkey, Marmoset, Mouse, Rat, Elephant, Panda, Dog, Bat, Bovine, Horse, Rabbit, Pig, Opossum, Turkey, Chicken, Platypus (100%); Pufferfish (93%); Xenopus, Zebrafish (87%); Stickleback, Medaka, Seq squirt, Mosquito, Ant, Beetle (80%).
<b>Specificity:</b>	Recognizes human PKG1 alpha at ~75kD.
<b>Epitope:</b>	aa657-671
<b>Reactivity:</b>	Human, Gibbon, Monkey, Mouse, Rat, Bat, Bovine, Dog, Horse, Pig, Rabbit, Chicken
<b>Purification:</b>	Protein A purified
<b>Presentation:</b>	PBS, pH 7.2, 50% glycerol, 0.09% azide.
<b>Recommended Storage:</b>	Long term: -20°C; Short term: +4°C. Avoid repeat freeze-thaw cycles.
<b>Usage Summary:</b>	Immunohistochemistry: LS-B2219 was validated for use in immunohistochemistry on a panel of 21 formalin-fixed, paraffin-embedded (FFPE) human tissues after heat induced antigen retrieval in pH 6.0 citrate buffer. After incubation with the primary antibody, slides were incubated with biotinylated secondary antibody, followed by alkaline phosphatase-streptavidin and chromogen. The stained slides were evaluated by a pathologist to confirm staining specificity. The optimal working concentration for LS-B2219 was determined to be 10 µg/ml. Western Blot: Positive control: Mouse Brain Tissue Extract, Rat Brain Tissue Extract.
<b>Uses:</b>	IHC - Paraffin (10 µg/ml), Western blot (1 µg/ml) (Optimal dilution to be determined by the researcher)
<b>Size:</b>	50 µg
<b>Concentration:</b>	1 mg/ml

**Immunohistochemistry Image:**



Anti-PRKG1 / CGKI antibody IHC of human skeletal muscle. Immunohistochemistry of formalin-fixed, paraffin-embedded tissue after heat-induced antigen retrieval. Antibody LS-B2219 concentration 10 ug/ml.

**Requested From:**

Japan

Laboratory Reagent For In Vitro Research Use Only

Not for resale without prior written consent from LifeSpan BioSciences, Inc.

Created on 9/23/2014

© 2014 LifeSpan BioSciences