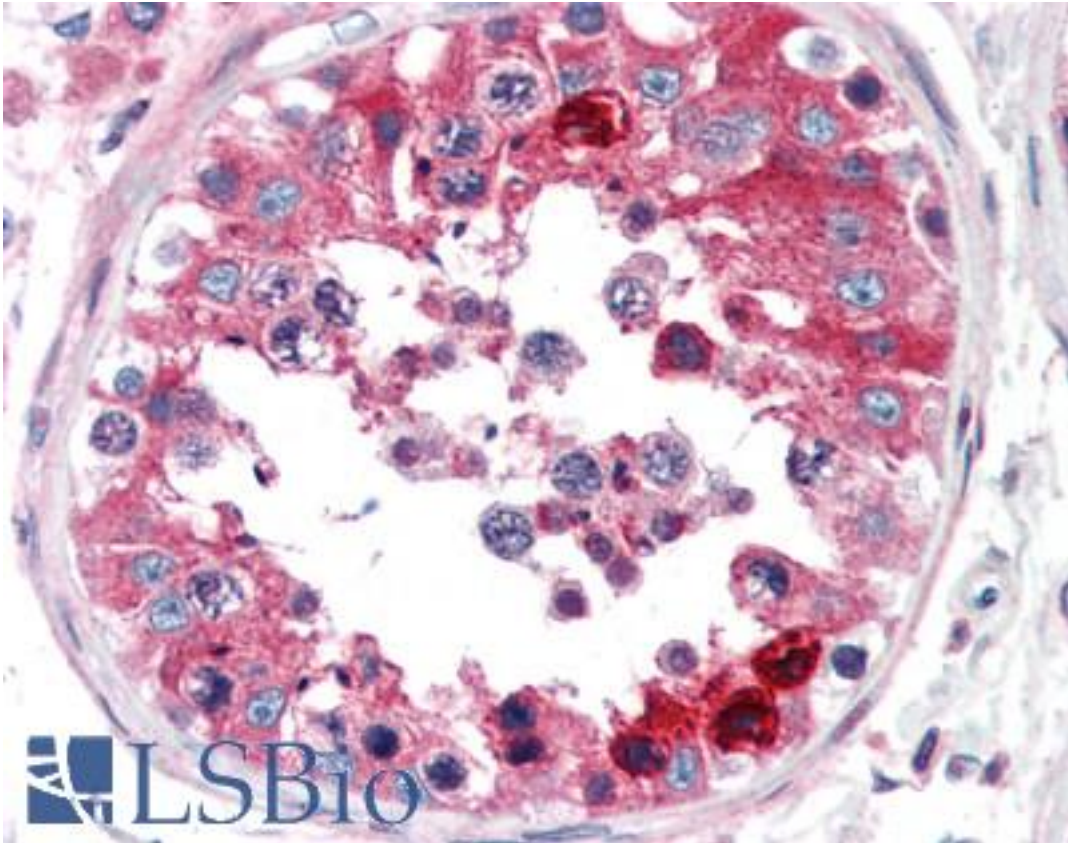


CLU / Clusterin Mouse anti-Human Monoclonal Antibody - LS-B2218 - LSBio	
CatalogID:	LS-B2218
Validation:	This antibody replaces catalog number LS-C6185. It has been validated for use in the following assays: IHC-P.
Target:	clusterin
Synonyms:	CLU Antibody, APO-J Antibody, Apolipoprotein J Antibody, CLU1 Antibody, Clusterin Antibody, Complement lysis inhibitor Antibody, CLI Antibody, AAG4 Antibody, Aging-associated protein 4 Antibody, Ku70-binding protein 1 Antibody, KUB1 Antibody, SGP2 Antibody, APOJ Antibody, SGP-2 Antibody, Sulfated glycoprotein 2 Antibody, CLU2 Antibody, Complement cytolysis inhibitor Antibody, NA1/NA2 Antibody, SP-40 Antibody
Host	CLU antibody was produced in Mouse
Clonality:	Monoclonal
Isotype:	IgG1,k
Immunogen Species:	CLU / Clusterin antibody was raised against Human
Antigen Type:	Purified protein
Immunogen:	CLU / Clusterin antibody was raised against native clusterin purified from human serum.
Specificity:	Recognizes human clusterin, alpha at 40kD, and precursor protein.
Reactivity:	Human
Purification:	Protein G purified
Presentation:	0.1 M Tris-glycine, pH 7.4, 0.15 M sodium chloride, 0.05% sodium azide, before the addition of glycerol to 40%
Recommended Storage:	Short term +4°C (no longer than one week); Long term -20°C; Aliquot to avoid freeze/thaw cycles.
Usage Summary:	Immunohistochemistry: LS-B2218 was validated for use in immunohistochemistry on a panel of 21 formalin-fixed, paraffin-embedded (FFPE) human tissues after heat induced antigen retrieval in pH 6.0 citrate buffer. After incubation with the primary antibody, slides were incubated with biotinylated secondary antibody, followed by alkaline phosphatase-streptavidin and chromogen. The stained slides were evaluated by a pathologist to confirm staining specificity. The optimal working concentration for LS-B2218 was determined to be 5 ug/ml. Western Blot: 0.5-2 ug/ml. Detects human clusterin a chain (40kD) in RIPA lysates from HeLa cells, human serum and MCF-7 cell lysates.
Uses:	IHC - Paraffin (5 µg/ml), Western blot (0.5 - 2 µg/ml) (Optimal dilution to be determined by the researcher)
Size:	50 µg
Concentration:	0.5 mg/ml

Immunohistochemistry Image:



Anti-Clusterin antibody IHC of human testis. Immunohistochemistry of formalin-fixed, paraffin-embedded tissue after heat-induced antigen retrieval. Antibody LS-B2218 concentration 5 ug/ml.

Requested From:

Japan

Laboratory Reagent For In Vitro Research Use Only

Not for resale without prior written consent from LifeSpan BioSciences, Inc.

Created on 9/23/2014

© 2014 LifeSpan BioSciences