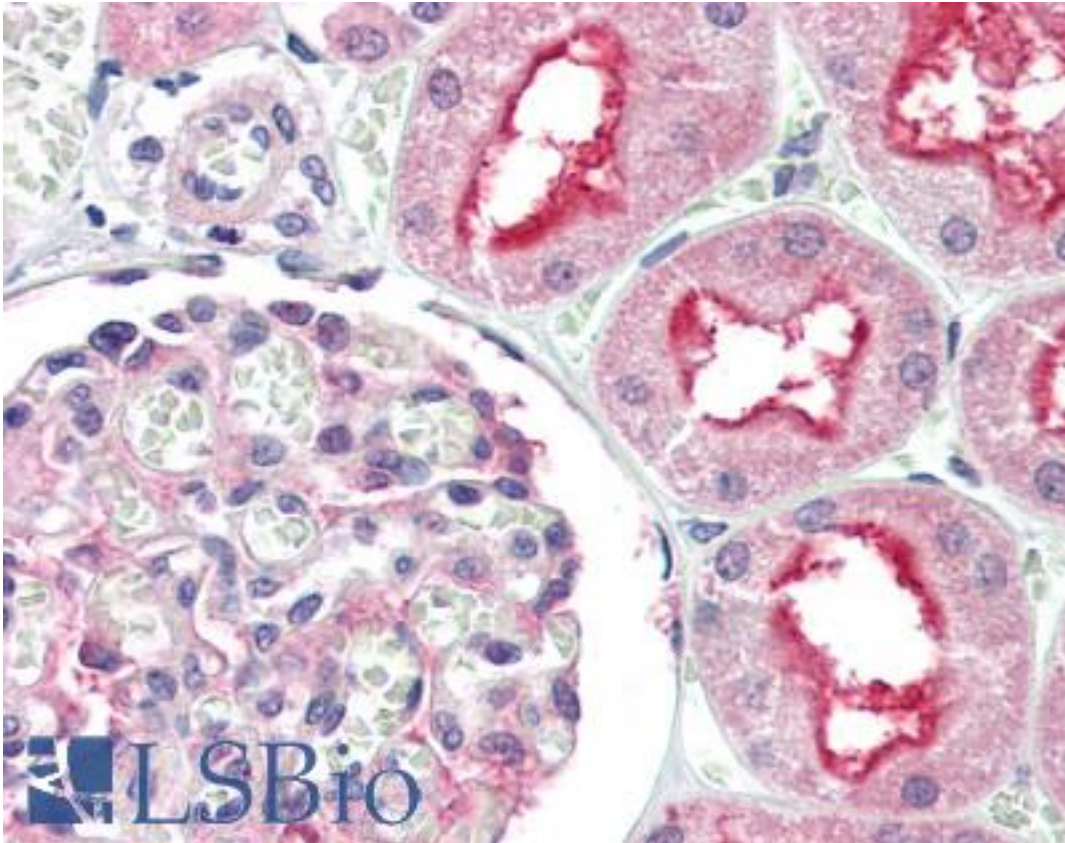


**Apg7 / ATG7 Rabbit anti-Human Polyclonal (N-Terminus) Antibody - LS-B2217 - LSBio**

<b>CatalogID:</b>	LS-B2217
<b>Validation:</b>	This antibody replaces catalog number LS-C3768. It has been validated for use in the following assays: IHC-P.
<b>Target:</b>	autophagy related 7 (ATG7)
<b>Synonyms:</b>	ATG7 Antibody, Apg7 Antibody, APG7L Antibody, APG7-LIKE Antibody, Autophagy related 7 Antibody, Autophagy-related protein 7 Antibody, HAGP7 Antibody, GSA7 Antibody
<b>Host</b>	ATG7 antibody was produced in Rabbit
<b>Clonality:</b>	Polyclonal
<b>Isotype:</b>	IgG
<b>Immunogen Species:</b>	Apg7 / ATG7 antibody was raised against Human
<b>Antigen Type:</b>	Synthetic peptide
<b>Immunogen:</b>	Apg7 / ATG7 antibody was raised against a 17 amino acid peptide from near the amino terminus of human APG7 (Genbank accession No. NP_006386).
<b>Specificity:</b>	Recognizes human APG7.
<b>Epitope:</b>	N-Terminus
<b>Reactivity:</b>	Human, Mouse
<b>Purification:</b>	Immunoaffinity purified
<b>Presentation:</b>	PBS, pH 7.2, 0.02% sodium azide.
<b>Recommended Storage:</b>	Long term: Add glycerol (40-50%) -20°C; Short term: +4°C
<b>Usage Summary:</b>	Immunohistochemistry: LS-B2217 was validated for use in immunohistochemistry on a panel of 21 formalin-fixed, paraffin-embedded (FFPE) human tissues after heat induced antigen retrieval in pH 6.0 citrate buffer. After incubation with the primary antibody, slides were incubated with biotinylated secondary antibody, followed by alkaline phosphatase-streptavidin and chromogen. The stained slides were evaluated by a pathologist to confirm staining specificity. The optimal working concentration for LS-B2217 was determined to be 5 ug/ml. Positive control: L1210 cell lysate.
<b>Uses:</b>	IHC - Paraffin (5 µg/ml), ICC (10 µg/ml), Western blot, ELISA (Optimal dilution to be determined by the researcher)
<b>Size:</b>	50 µg

**Immunohistochemistry Image:**



Anti-ATG7 antibody IHC of human kidney. Immunohistochemistry of formalin-fixed, paraffin-embedded tissue after heat-induced antigen retrieval. Antibody LS-B2217 concentration 5 ug/ml.

**Requested From:**

Japan

Laboratory Reagent For In Vitro Research Use Only

Not for resale without prior written consent from LifeSpan BioSciences, Inc.

Created on 9/23/2014

© 2014 LifeSpan BioSciences