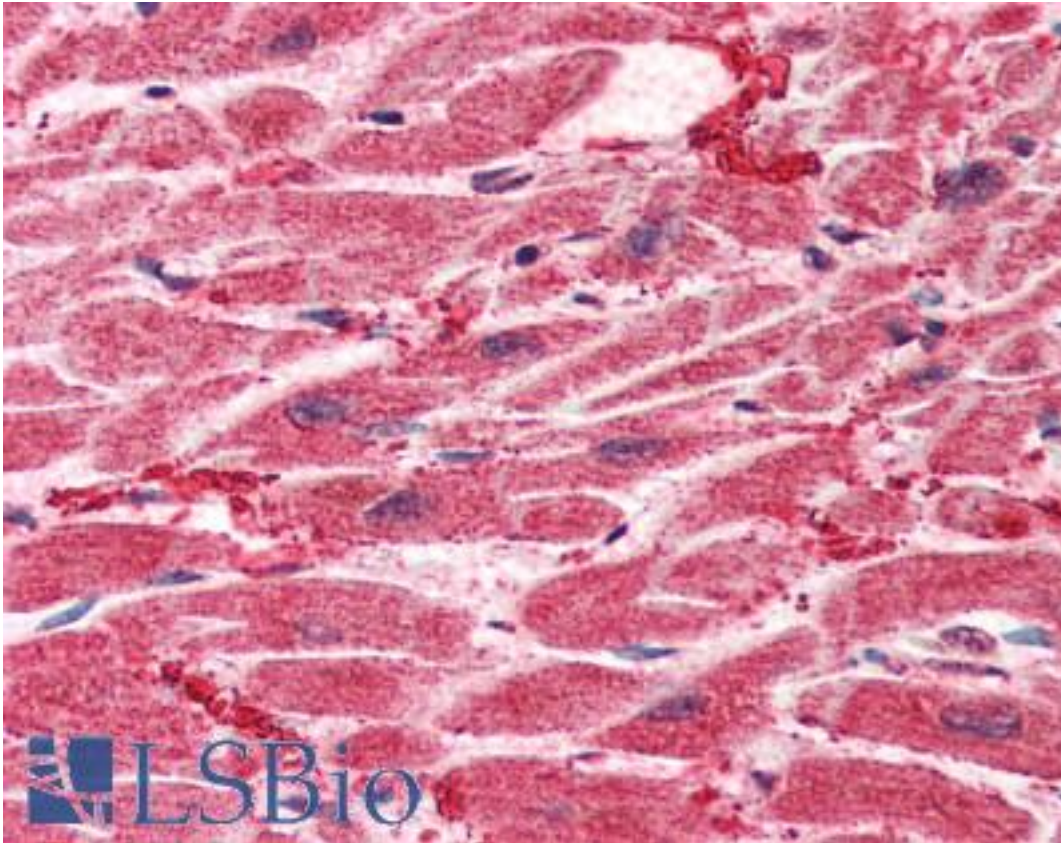


HES1 / HES-1 Rabbit anti-Human Polyclonal (aa24-35) Antibody - LS-B2211 - LSBio

CatalogID:	LS-B2211
Validation:	This antibody replaces catalog number LS-C24204. It has been validated for use in the following assays: IHC-P.
Target:	hes family bHLH transcription factor 1 (HES1)
Synonyms:	HES1 Antibody, BHLHb39 Antibody, HHL Antibody, HL Antibody, Hairy and enhancer of split 1 Antibody, Hairy homolog Antibody, HRY Antibody, Hairy homolog (Drosophila) Antibody, Transcription factor HES-1 Antibody, Hairy-like protein Antibody, HES-1 Antibody
Host	HES1 antibody was produced in Rabbit
Clonality:	Polyclonal
Isotype:	IgG
Immunogen Species:	HES1 / HES-1 antibody was raised against Human
Antigen Type:	Synthetic peptide
Immunogen:	HES1 / HES-1 antibody was raised against synthetic peptide corresponding to aa24-35 (TPDKPKTASEH) OF HES1. Percent identity by BLAST analysis: Human, Gorilla, Gibbon, Marmoset, Mouse, Rat, Hamster, Elephant, Panda, Bat, Bovine, Horse, Rabbit, Xenopus, Salmon, Stickleback, Pufferfish, Zebrafish (100%); Newt, Smelt (91%); Chicken (82%).
Specificity:	Recognizes human HES-1 (Hairy family).
Epitope:	aa24-35
Reactivity:	Human, Gorilla, Gibbon, Monkey, Mouse, Rat, Bat, Bovine, Hamster, Horse, Rabbit, Xenopus, Zebrafish
Purification:	Immunoaffinity purified
Presentation:	PBS, pH 7.2. No preservative added.
Recommended Storage:	Long term: -20°C; Short term: +4°C. Avoid repeat freeze-thaw cycles.
Usage Summary:	Immunohistochemistry: LS-B2211 was validated for use in immunohistochemistry on a panel of 21 formalin-fixed, paraffin-embedded (FFPE) human tissues after heat induced antigen retrieval in pH 6.0 citrate buffer. After incubation with the primary antibody, slides were incubated with biotinylated secondary antibody, followed by alkaline phosphatase-streptavidin and chromogen. The stained slides were evaluated by a pathologist to confirm staining specificity. The optimal working concentration for LS-B2211 was determined to be 5 ug/ml. Positive control: Human neural stem cells, Raji cell lysate.
Uses:	IHC - Paraffin (5 µg/ml), IHC - Frozen, Immunofluorescence, Western blot (1:200 - 1:1000) (Optimal dilution to be determined by the researcher)
Size:	50 µg
Concentration:	1 mg/ml

Immunohistochemistry Image:



Anti-HES1 antibody IHC of human heart. Immunohistochemistry of formalin-fixed, paraffin-embedded tissue after heat-induced antigen retrieval. Antibody LS-B2211 concentration 5 ug/ml.

Requested From:

Japan

Laboratory Reagent For In Vitro Research Use Only

Not for resale without prior written consent from LifeSpan BioSciences, Inc.

Created on 9/23/2014

© 2014 LifeSpan BioSciences