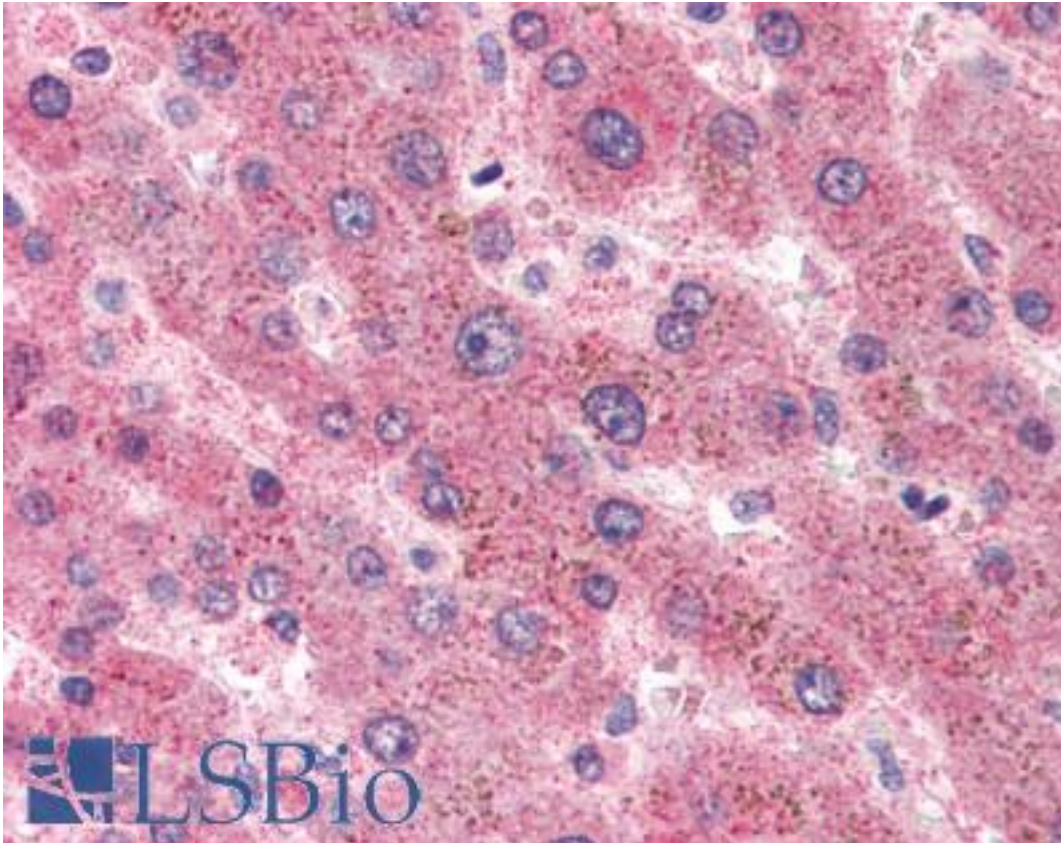


SAA1 / SAA / Serum Amyloid A Mouse anti-Human Monoclonal Antibody - LS-B2208 - LSBio	
CatalogID:	LS-B2208
Validation:	This antibody replaces catalog number LS-C20535. It has been validated for use in the following assays: IHC-P.
Target:	serum amyloid A1 (SAA1)
Synonyms:	SAA1 Antibody, Serum amyloid A protein Antibody, Serum Amyloid A Antibody, Serum amyloid A-1 protein Antibody, TP5314 Antibody, SAA Antibody, Serum amyloid A1 Antibody, PIG4 Antibody
Host	SAA1 antibody was produced in Mouse
Clonality:	Monoclonal
Isotype:	IgG2a,k
Immunogen Species:	SAA1 / SAA / Serum Amyloid A antibody was raised against Human
Immunogen:	SAA1 / SAA / Serum Amyloid A antibody was raised against highly purified recombinant human SAA 12kD.
Specificity:	Reacts with natural and recombinant human SAA. Does not show any cross-reactivity with other human cytokines or growth factors tested such as IL-1B, IL-8, MCAF, TGF-B and EGF.
Reactivity:	Human
Purification:	Protein G purified
Presentation:	PBS, pH 7.2.
Recommended Storage:	Long term: -20°C; Short term: +4°C. Avoid repeat freeze-thaw cycles.
Usage Summary:	Immunohistochemistry: LS-B2208 was validated for use in immunohistochemistry on a panel of 21 formalin-fixed, paraffin-embedded (FFPE) human tissues after heat induced antigen retrieval in pH 6.0 citrate buffer. After incubation with the primary antibody, slides were incubated with biotinylated secondary antibody, followed by alkaline phosphatase-streptavidin and chromogen. The stained slides were evaluated by a pathologist to confirm staining specificity. The optimal working concentration for LS-B2208 was determined to be 5 ug/ml. Western Blot: 0.1-0.5 ug will allow visualization of 100 ng/lane of recombinant human SAA. Suitable for use in sandwich ELISA alongside LS-B2130.
Uses:	IHC - Paraffin (5 µg/ml), Western blot, ELISA, Sandwich ELISA (Optimal dilution to be determined by the researcher)
Size:	50 µg
Concentration:	1 mg/ml

Immunohistochemistry Image:



Anti-SAA1 / Serum Amyloid A antibody IHC of human liver. Immunohistochemistry of formalin-fixed, paraffin-embedded tissue after heat-induced antigen retrieval. Antibody LS-B2208 concentration 5 ug/ml.

Requested From:

Japan

Laboratory Reagent For In Vitro Research Use Only

Not for resale without prior written consent from LifeSpan BioSciences, Inc.

Created on 9/23/2014

© 2014 LifeSpan BioSciences