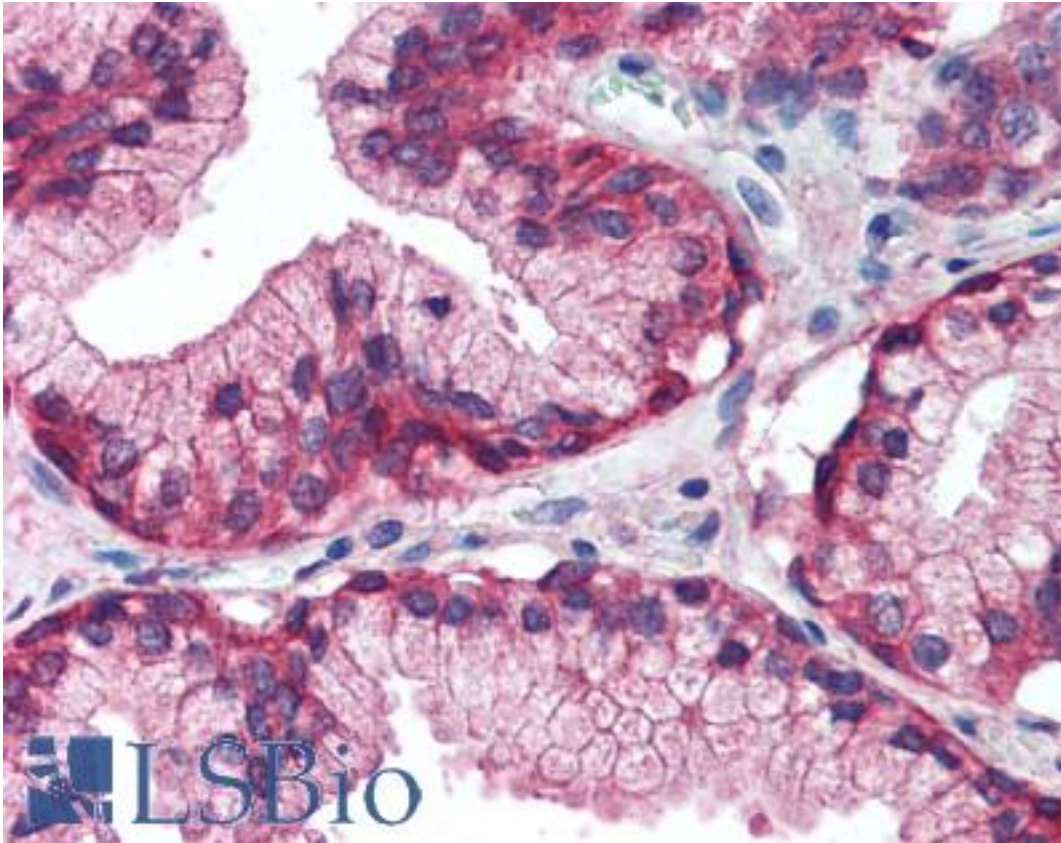


EGFR Sheep anti-Human Polyclonal (Internal) Antibody - LS-B2199 - LSBio	
<b>CatalogID:</b>	LS-B2199
<b>Validation:</b>	This antibody replaces catalog number LS-C6555. It has been validated for use in the following assays: IHC-P.
<b>Target:</b>	epidermal growth factor receptor (EGFR)
<b>Synonyms:</b>	EGFR Antibody, EGf receptor Antibody, ERBB Antibody, ERBB1 Antibody, MENA Antibody, Panitumumab Antibody, PIG61 Antibody, Proto-oncogene c-ErbB -1 Antibody, V-erb-b homolog Antibody, EGF-R Antibody, HER1 Antibody
<b>Family / Subfamily:</b>	Protein Kinase / EGF Receptor
<b>Host</b>	EGFR antibody was produced in Sheep
<b>Clonality:</b>	Polyclonal
<b>Isotype:</b>	IgG
<b>Immunogen Species:</b>	EGFR antibody was raised against Human
<b>Antigen Type:</b>	Recombinant protein
<b>Immunogen:</b>	EGFR antibody was raised against recombinant 20aa residues representing a portion of the internal domain of EGFR proximal to the phosphorylation region.
<b>Specificity:</b>	Recognizes human Epidermal Growth Factor Receptor.
<b>Epitope:</b>	Internal
<b>Reactivity:</b>	Human, Mouse, Rat, Chicken
<b>Purification:</b>	Protein G purified
<b>Presentation:</b>	0.15 M PBS, pH 7.2. No preservatives added.
<b>Recommended Storage:</b>	Long term: -20°C; Short term: +4°C. Avoid repeat freeze-thaw cycles.
<b>Usage Summary:</b>	Immunohistochemistry: LS-B2199 was validated for use in immunohistochemistry on a panel of 21 formalin-fixed, paraffin-embedded (FFPE) human tissues after heat induced antigen retrieval in pH 6.0 citrate buffer. After incubation with the primary antibody, slides were incubated with biotinylated secondary antibody, followed by alkaline phosphatase-streptavidin and chromogen. The stained slides were evaluated by a pathologist to confirm staining specificity. The optimal working concentration for LS-B2199 was determined to be 5 ug/ml.
<b>Uses:</b>	IHC - Paraffin (5 µg/ml), ICC, Immunofluorescence, Western blot, Immunoprecipitation, ELISA (Optimal dilution to be determined by the researcher)
<b>Size:</b>	50 µg
<b>Concentration:</b>	1 mg/ml

**Immunohistochemistry Image:**



Anti-EGFR antibody IHC of human prostate. Immunohistochemistry of formalin-fixed, paraffin-embedded tissue after heat-induced antigen retrieval. Antibody LS-B2199 concentration 5 ug/ml.

**Requested From:**

Japan

Laboratory Reagent For In Vitro Research Use Only

Not for resale without prior written consent from LifeSpan BioSciences, Inc.

Created on 9/23/2014

© 2014 LifeSpan BioSciences