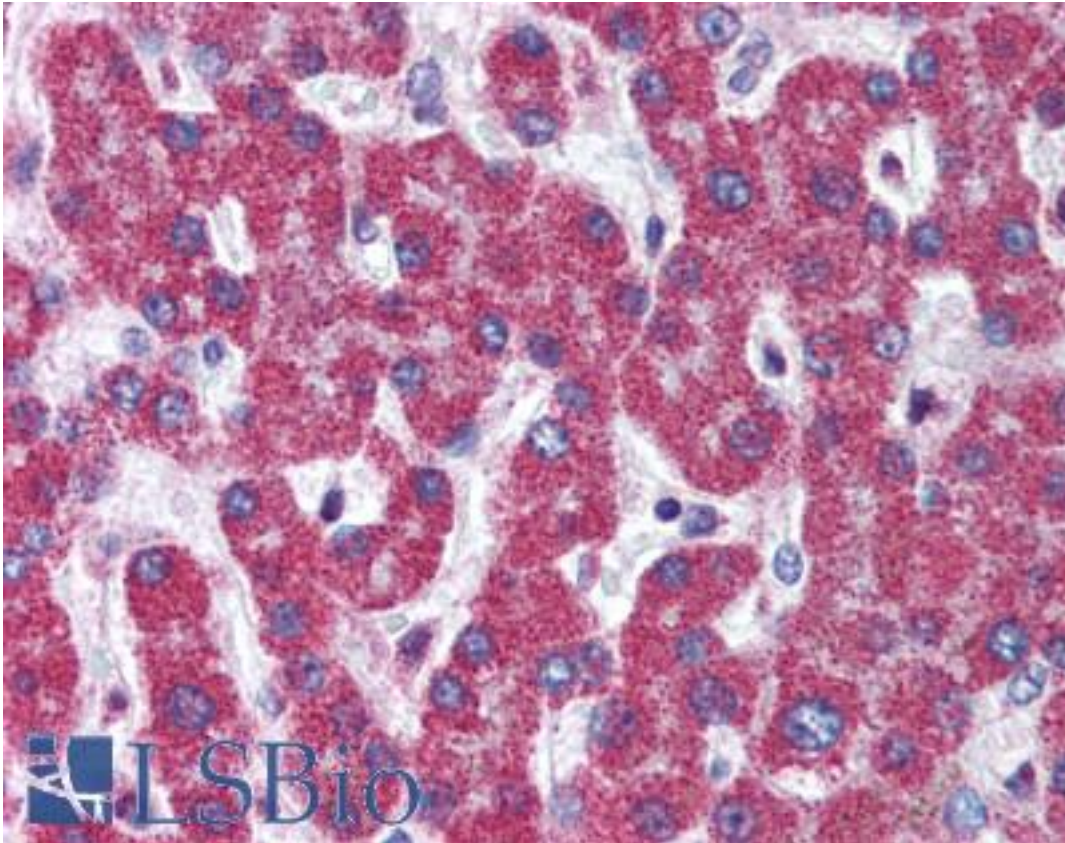


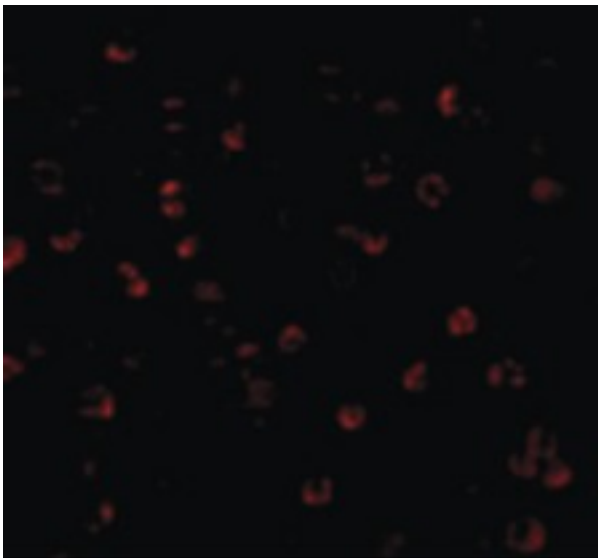
Apg7 / ATG7 Rabbit anti-Human Polyclonal (C-Terminus) Antibody - LS-B2194 - LSBio	
<b>CatalogID:</b>	LS-B2194
<b>Validation:</b>	This antibody replaces catalog number LS-C19538. It has been validated for use in the following assays: IHC-P.
<b>Target:</b>	autophagy related 7 (ATG7)
<b>Synonyms:</b>	ATG7 Antibody, Apg7 Antibody, APG7L Antibody, APG7-LIKE Antibody, Autophagy related 7 Antibody, Autophagy-related protein 7 Antibody, HAGP7 Antibody, GSA7 Antibody
<b>Host</b>	ATG7 antibody was produced in Rabbit
<b>Clonality:</b>	Polyclonal
<b>Immunogen Species:</b>	Apg7 / ATG7 antibody was raised against Human
<b>Antigen Type:</b>	Synthetic peptide
<b>Immunogen:</b>	Apg7 / ATG7 antibody was raised against synthetic peptide from human ATG7.
<b>Specificity:</b>	17 amino acid peptide from near the carboxy terminus of human APG7.
<b>Epitope:</b>	C-Terminus
<b>Reactivity:</b>	Human, Mouse
<b>Purification:</b>	Immunoaffinity purified
<b>Presentation:</b>	PBS, 0.02% sodium azide.
<b>Recommended Storage:</b>	Short term 4°C, long term aliquot and store at -20°C, avoid freeze thaw cycles. Store undiluted.
<b>Usage Summary:</b>	Immunohistochemistry: LS-B2194 was validated for use in immunohistochemistry on a panel of 21 formalin-fixed, paraffin-embedded (FFPE) human tissues after heat induced antigen retrieval in pH 6.0 citrate buffer. After incubation with the primary antibody, slides were incubated with biotinylated secondary antibody, followed by alkaline phosphatase-streptavidin and chromogen. The stained slides were evaluated by a pathologist to confirm staining specificity. The optimal working concentration for LS-B2194 was determined to be 5 ug/ml.
<b>Uses:</b>	IHC - Paraffin (5 µg/ml), ICC, Western blot (0.5 - 1 µg/ml) (Optimal dilution to be determined by the researcher)
<b>Size:</b>	50 µg
<b>Concentration:</b>	1 mg/ml

**Immunohistochemistry Image:**



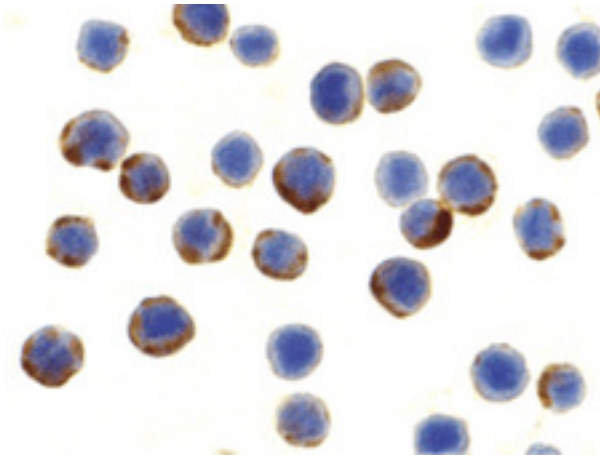
Anti-ATG7 antibody IHC of human liver. Immunohistochemistry of formalin-fixed, paraffin-embedded tissue after heat-induced antigen retrieval. Antibody LS-B2194 concentration 5 ug/ml.

**Immunofluorescence Image:**



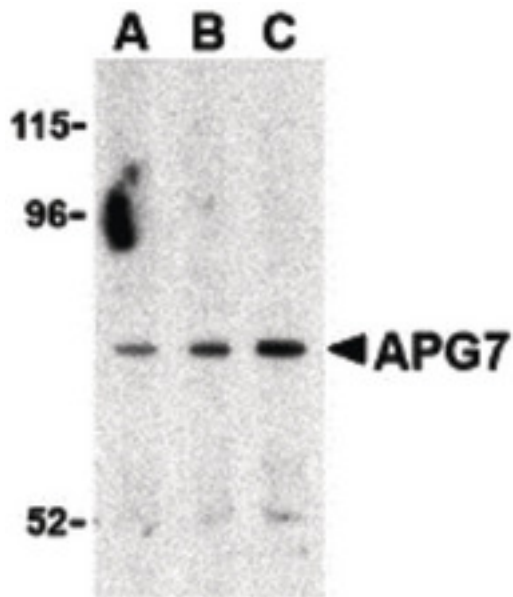
Immunofluorescence of APG7 in MCF7 cells with APG7 antibody at 20 ug/ml.

**Immunocytochemistry Image:**



Immunocytochemistry of APG7 in MCF7 cells with APG7 antibody at 10 ug/ml.

**Western Blot Image:**



Western blot of APG7 in Caco-2 cell lysate with APG7 antibody at (A) 0.5, (B) 1 and (C) 2 ug/ml.

**Requested From:**

Japan

Laboratory Reagent For In Vitro Research Use Only

Not for resale without prior written consent from LifeSpan BioSciences, Inc.

Created on 9/23/2014

© 2014 LifeSpan BioSciences