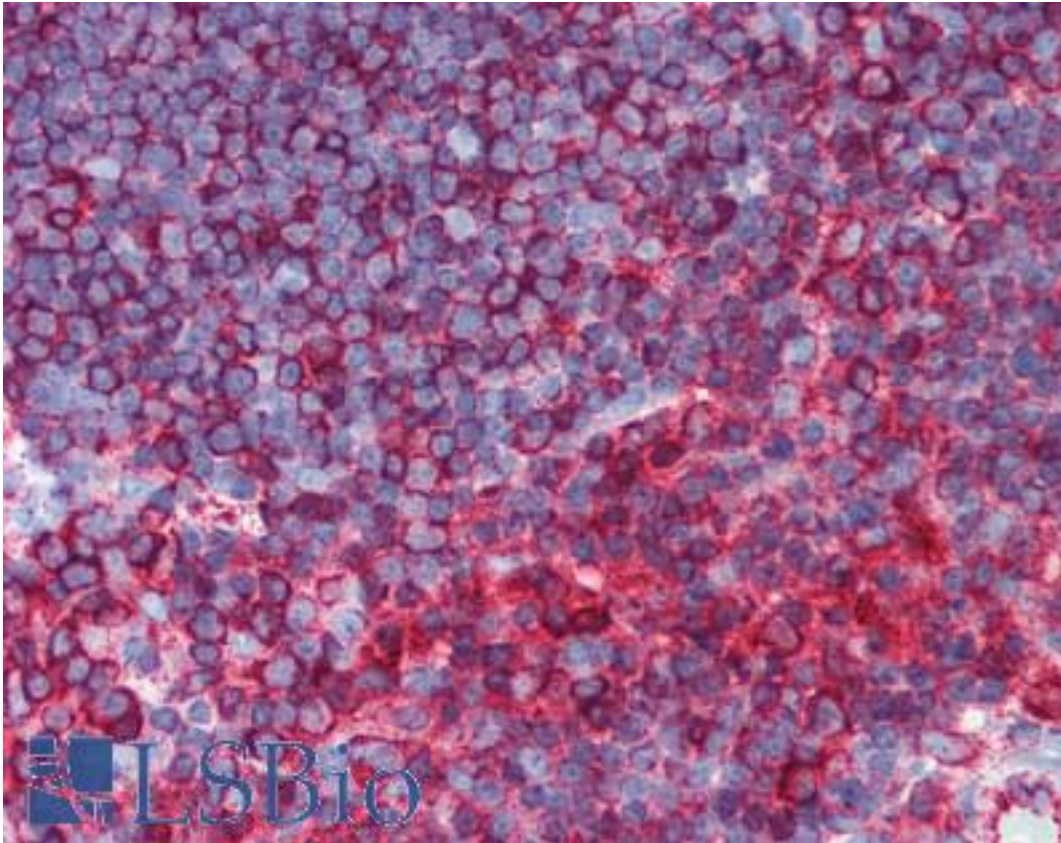


TUBB / Beta Tubulin Rabbit anti-Human Monoclonal (N-Terminus) (AF555) (9F3) Antibody - LS-B2189 - LSBio	
<b>CatalogID:</b>	LS-B2189
<b>Validation:</b>	This antibody replaces catalog number LS-C39982. It has been validated for use in the following assays: IHC-P.
<b>Target:</b>	tubulin, beta class I (TUBB)
<b>Synonyms:</b>	TUBB Antibody, Beta Tubulin Antibody, Beta 5-tubulin Antibody, Beta-4 tubulin Antibody, Beta1-tubulin Antibody, M40 Antibody, Tubulin beta-5 chain Antibody, Beta 1b tubulin Antibody, Class I beta-tubulin Antibody, OK/SW-cl.56 Antibody, TUBB5 Antibody, Tubulin beta chain Antibody, Tubulin beta polypeptide Antibody, Tubulin beta-1 chain Antibody, Tubulin, beta class I Antibody, Tubulin, beta polypeptide Antibody
<b>Host</b>	TUBB antibody was produced in Rabbit
<b>Clonality:</b>	Monoclonal
<b>Isotype:</b>	IgG
<b>Clone Name:</b>	9F3
<b>Conjugations:</b>	Alexa Fluor 555 (AF555)
<b>Immunogen Species:</b>	TUBB / Beta Tubulin antibody was raised against Human
<b>Antigen Type:</b>	Synthetic phospho-peptide
<b>Immunogen:</b>	TUBB / Beta Tubulin antibody was raised against synthetic phosphopeptide (KLH-coupled) corresponding to the amino terminus of human beta-Tubulin.
<b>Specificity:</b>	Detects endogenous levels of total human beta-Tubulin protein.
<b>Epitope:</b>	N-Terminus
<b>Reactivity:</b>	Human, Monkey, Mouse, Rat
<b>Purification:</b>	Purified
<b>Presentation:</b>	PBS, pH 7.2, less than 0.1% sodium azide, 2 mg/ml BSA.
<b>Recommended Storage:</b>	Store at 4° C. Do not freeze. Product should be stored undiluted, is photosensitive and should be protected from light.
<b>Usage Summary:</b>	Immunohistochemistry: LS-B2189 was validated for use in immunohistochemistry on a panel of 21 formalin-fixed, paraffin-embedded (FFPE) human tissues after heat induced antigen retrieval in pH 6.0 citrate buffer. After incubation with the primary antibody, slides were incubated with biotinylated secondary antibody, followed by alkaline phosphatase-streptavidin and chromogen. The stained slides were evaluated by a pathologist to confirm staining specificity. The optimal working concentration for LS-B2189 was determined to be 1:100.
<b>Uses:</b>	IHC - Paraffin (1:100), ICC, Immunofluorescence (Optimal dilution to be determined by the researcher)
<b>Size:</b>	50 µl

**Immunohistochemistry Image:**



Anti-TUBB / Tubulin, Beta antibody IHC of human thymus. Immunohistochemistry of formalin-fixed, paraffin-embedded tissue after heat-induced antigen retrieval. Antibody LS-B2189 dilution 1:100.

**Requested From:**

Japan

Laboratory Reagent For In Vitro Research Use Only

Not for resale without prior written consent from LifeSpan BioSciences, Inc.

Created on 9/23/2014

© 2014 LifeSpan BioSciences