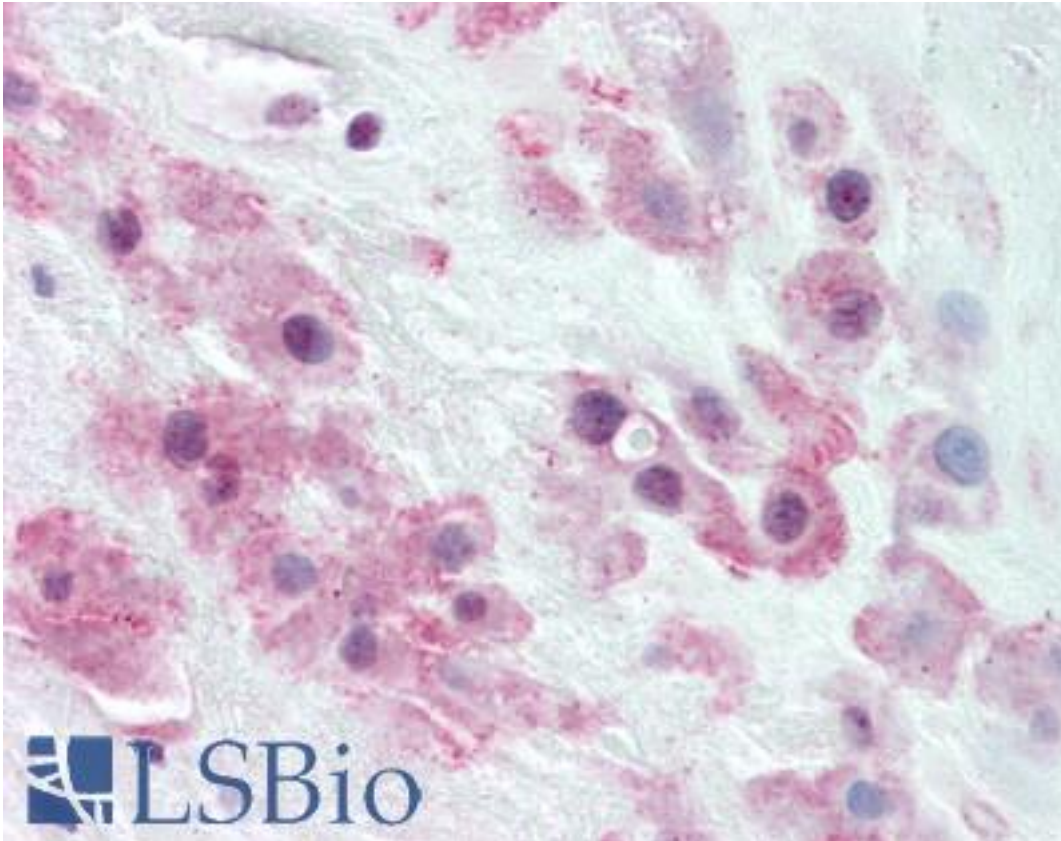


TJP2 / ZO2 / ZO-2 Rabbit anti-Human Polyclonal (C-Terminus) Antibody - LS-B2185 - LSBio	
<b>CatalogID:</b>	LS-B2185
<b>Validation:</b>	This antibody replaces catalog number LS-C26439. It has been validated for use in the following assays: IHC-P.
<b>Target:</b>	tight junction protein 2 (TJP2)
<b>Synonyms:</b>	TJP2 Antibody, C9DUPq21.11 Antibody, DUP9q21.11 Antibody, DFNA51 Antibody, ZO-2 Antibody, Zona occludens 2 Antibody, Zonula occludens protein 2 Antibody, Tight junction protein 2 Antibody, Tight junction protein ZO-2 Antibody, ZO2 Antibody, X104 Antibody, Zona occludens protein 2 Antibody
<b>Family / Subfamily:</b>	Occludin / not assigned-Occludin
<b>Host</b>	TJP2 antibody was produced in Rabbit
<b>Clonality:</b>	Polyclonal
<b>Immunogen Species:</b>	TJP2 / ZO2 / ZO-2 antibody was raised against Human
<b>Antigen Type:</b>	Synthetic peptide
<b>Immunogen:</b>	TJP2 / ZO2 / ZO-2 antibody was raised against synthetic peptide derived from the C-terminal region of human or canine ZO-2.
<b>Specificity:</b>	Recognizes the ~130-160kD human ZO-2 protein, isoforms A or C. A band of unknown origin lower than 75kD may be observed in certain lysates.
<b>Epitope:</b>	C-Terminus
<b>Reactivity:</b>	Human, Mouse, Rat, Dog
<b>Purification:</b>	Immunoaffinity purified
<b>Presentation:</b>	PBS, pH 7.4, 0.1% sodium azide.
<b>Recommended Storage:</b>	Short term: 4° C, Long term: aliquot to avoid repeated freezing and thawing, and store at -20° C.
<b>Usage Summary:</b>	<p>Immunohistochemistry: LS-B2185 was validated for use in immunohistochemistry on a panel of 21 formalin-fixed, paraffin-embedded (FFPE) human tissues after heat induced antigen retrieval in pH 6.0 citrate buffer. After incubation with the primary antibody, slides were incubated with biotinylated secondary antibody, followed by alkaline phosphatase-streptavidin and chromogen. The stained slides were evaluated by a pathologist to confirm staining specificity. The optimal working concentration for LS-B2185 was determined to be 5-10 ug/ml.</p> <p>Immunofluorescence: 2.5 ug/ml. Cells need to be fixed with ice-cold ethanol for 30 minutes on ice prior to assays. Positive control: Western Blot: CaCO2 human colorectal adenocarcinoma, MDCK II canine kidney, KNRK rat kidney, and TMCK-1 mouse kidney cell lysates.</p>
<b>Uses:</b>	IHC - Paraffin (5 - 10 µg/ml), Immunofluorescence (2.5 µg/ml), Western blot (1 - 3 µg/ml) (Optimal dilution to be determined by the researcher)
<b>Size:</b>	50 µg
<b>Concentration:</b>	0.25 mg/ml

**Immunohistochemistry Image:**



Anti-TJP2 / ZO-2 antibody IHC of human placenta, intermediate trophoblasts.  
Immunohistochemistry of formalin-fixed, paraffin-embedded tissue after heat-induced antigen retrieval. Antibody LS-B2185 concentration 10 ug/ml.

**Requested From:**

Japan

Laboratory Reagent For In Vitro Research Use Only

Not for resale without prior written consent from LifeSpan BioSciences, Inc.

Created on 9/23/2014

© 2014 LifeSpan BioSciences