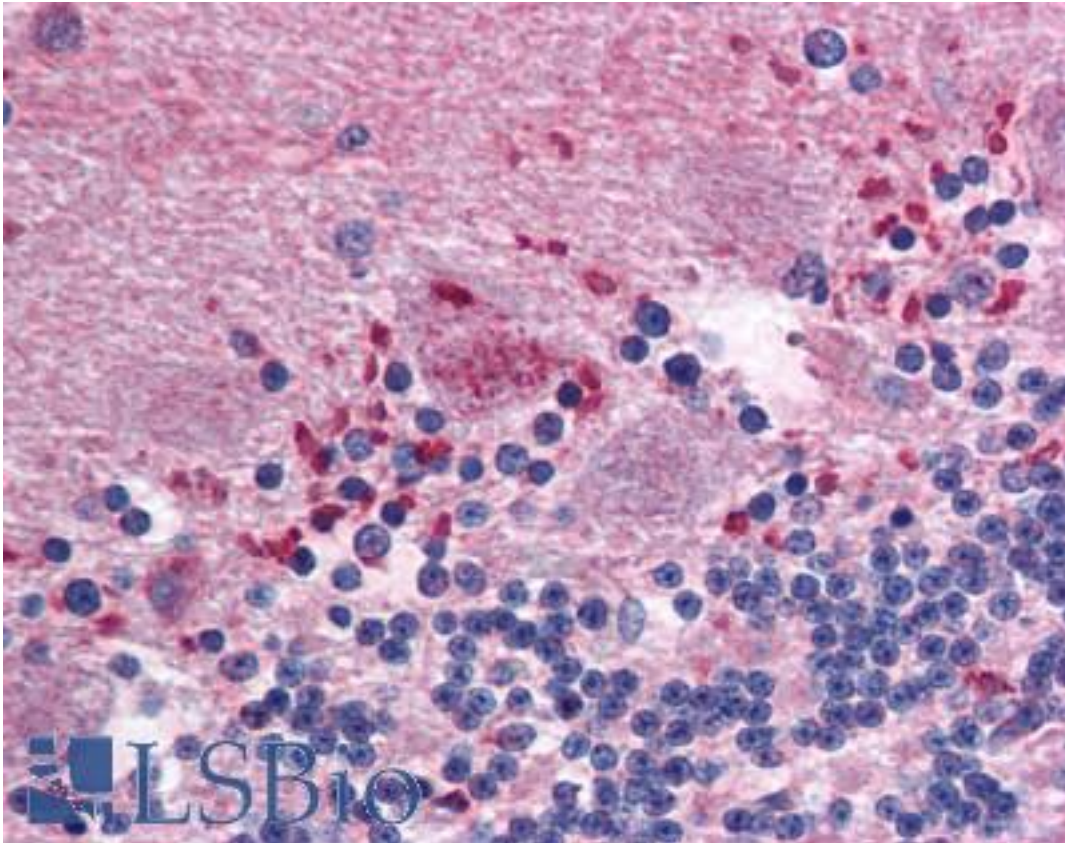


CLDN12 / Claudin 12 Rabbit anti-Human Polyclonal (N-Terminus) Antibody - LS-B2181 - LSBio	
CatalogID:	LS-B2181
Validation:	This antibody replaces catalog number LS-C6167. It has been validated for use in the following assays: IHC-P.
Target:	claudin 12 (CLDN12)
Synonyms:	CLDN12 Antibody, Claudin 12 Antibody, Claudin-12 Antibody
Family / Subfamily:	Claudin
Host	CLDN12 antibody was produced in Rabbit
Clonality:	Polyclonal
Isotype:	IgG
Immunogen Species:	CLDN12 / Claudin 12 antibody was raised against Human
Antigen Type:	Synthetic peptide
Immunogen:	CLDN12 / Claudin 12 antibody was raised against synthetic peptide derived from the N-terminal region of mouse and human Claudin 12.
Specificity:	Recognizes mouse Claudin 12 protein at ~27kD in Western blots. Cross-reactivity has been confirmed on mouse lung, colon and kidney homogenates. Recognizes human protein in IHC-P.
Epitope:	N-Terminus
Reactivity:	Human, Mouse
Purification:	Immunoaffinity purified
Presentation:	PBS, pH 7.4, 0.1% sodium azide.
Recommended Storage:	Long term: -20°C; Short term: +4°C; Avoid freeze-thaw cycles.
Usage Summary:	Immunohistochemistry: LS-B2181 was validated for use in immunohistochemistry on a panel of 21 formalin-fixed, paraffin-embedded (FFPE) human tissues after heat induced antigen retrieval in pH 6.0 citrate buffer. After incubation with the primary antibody, slides were incubated with biotinylated secondary antibody, followed by alkaline phosphatase-streptavidin and chromogen. The stained slides were evaluated by a pathologist to confirm staining specificity. The optimal working concentration for LS-B2181 was determined to be 5 ug/ml. Immunofluorescence: 5 ug/ml, performed using ethanol-fixed mouse colon. Positive control: Mouse lung, colon, and kidney homogenates.
Uses:	IHC - Paraffin (5 µg/ml), Immunofluorescence (5 µg/ml), Western blot (1 - 3 µg/ml) (Optimal dilution to be determined by the researcher)
Size:	50 µg
Concentration:	0.25 mg/ml

Immunohistochemistry Image:



Anti-CLDN12 / Claudin 12 antibody IHC of human brain, cerebellum. Immunohistochemistry of formalin-fixed, paraffin-embedded tissue after heat-induced antigen retrieval. Antibody LS-B2181 concentration 5 ug/ml.

Requested From:

Japan

Laboratory Reagent For In Vitro Research Use Only

Not for resale without prior written consent from LifeSpan BioSciences, Inc.

Created on 9/23/2014

© 2014 LifeSpan BioSciences