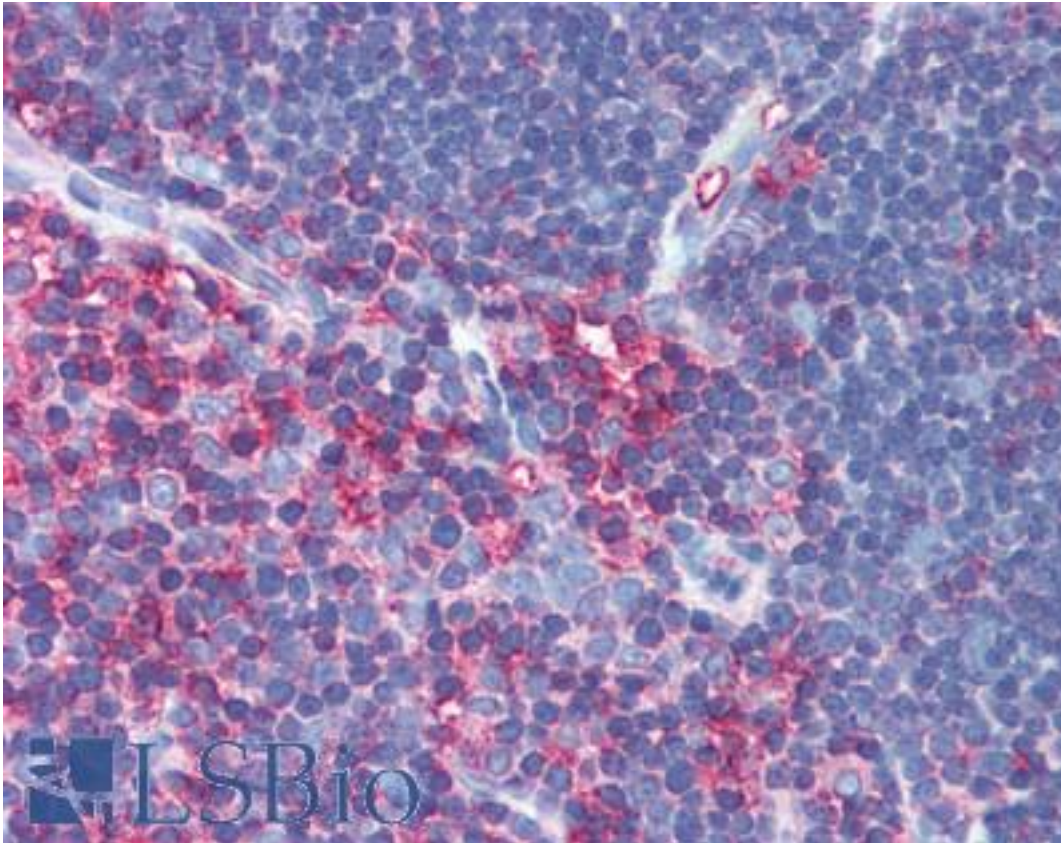


MSN / Moesin Mouse anti-Bovine Monoclonal Antibody - LS-B2180 - LSBio

| | |
|-----------------------------|---|
| CatalogID: | LS-B2180 |
| Validation: | This antibody replaces catalog number LS-C25632. It has been validated for use in the following assays: IHC-P. |
| Target: | moesin (MSN) |
| Synonyms: | MSN Antibody, Moesin Antibody |
| Host | MSN antibody was produced in Mouse |
| Clonality: | Monoclonal |
| Isotype: | IgG1,k |
| Immunogen Species: | MSN / Moesin antibody was raised against Bovine |
| Antigen Type: | Purified protein |
| Immunogen: | MSN / Moesin antibody was raised against moesin from cow uterus. |
| Specificity: | Recognizes 78kD moesin. Weakly recognizes 80kD radixin. Detects most of the proteolytic fragments of moesin. Does not react with talin or ezrin. |
| Reactivity: | Bovine, Human, Rat |
| Purification: | Protein G purified |
| Presentation: | PBS, pH 7.4, 0.2% BSA, 0.09% sodium azide |
| Recommended Storage: | Long term: -20°C; Short term: +4°C. Avoid repeat freeze-thaw cycles. |
| Usage Summary: | Immunohistochemistry: LS-B2180 was validated for use in immunohistochemistry on a panel of 21 formalin-fixed, paraffin-embedded (FFPE) human tissues after heat induced antigen retrieval in pH 6.0 citrate buffer. After incubation with the primary antibody, slides were incubated with biotinylated secondary antibody, followed by alkaline phosphatase-streptavidin and chromogen. The stained slides were evaluated by a pathologist to confirm staining specificity. The optimal working concentration for LS-B2180 was determined to be 5 ug/ml. Immunoprecipitation: Denatured only. 2 ug/mg protein lysate using Protein G. Western Blot: 1-2 ug/ml for 2 hours at RT. Positive control: Raji cells, placenta. |
| Uses: | IHC - Paraffin (5 µg/ml), Immunofluorescence, Western blot (1 - 2 µg/ml), Immunoprecipitation, ELISA (Optimal dilution to be determined by the researcher) |
| Size: | 250 µl |
| Concentration: | 0.2 mg/ml |

Immunohistochemistry Image:



Anti-MSN / Moesin antibody IHC of human thymus. Immunohistochemistry of formalin-fixed, paraffin-embedded tissue after heat-induced antigen retrieval. Antibody LS-B2180 concentration 5 ug/ml.

Requested From:

Japan

Laboratory Reagent For In Vitro Research Use Only

Not for resale without prior written consent from LifeSpan BioSciences, Inc.

Created on 9/23/2014

© 2014 LifeSpan BioSciences